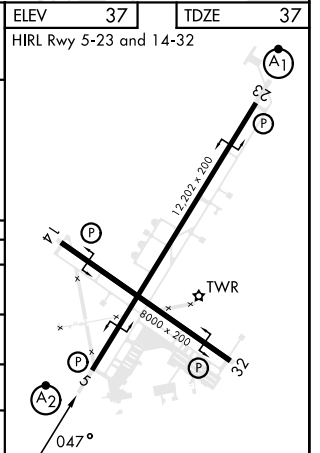
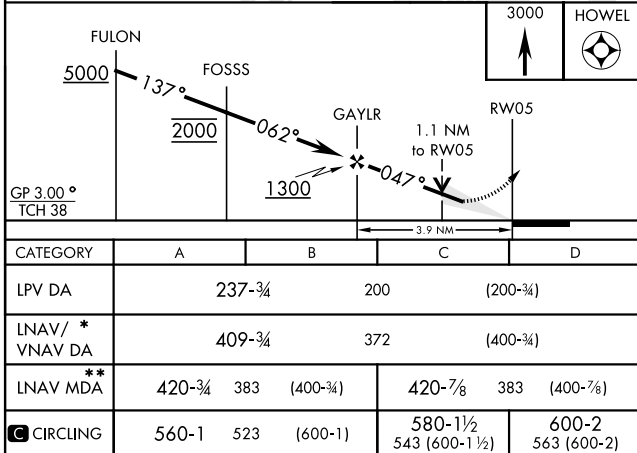
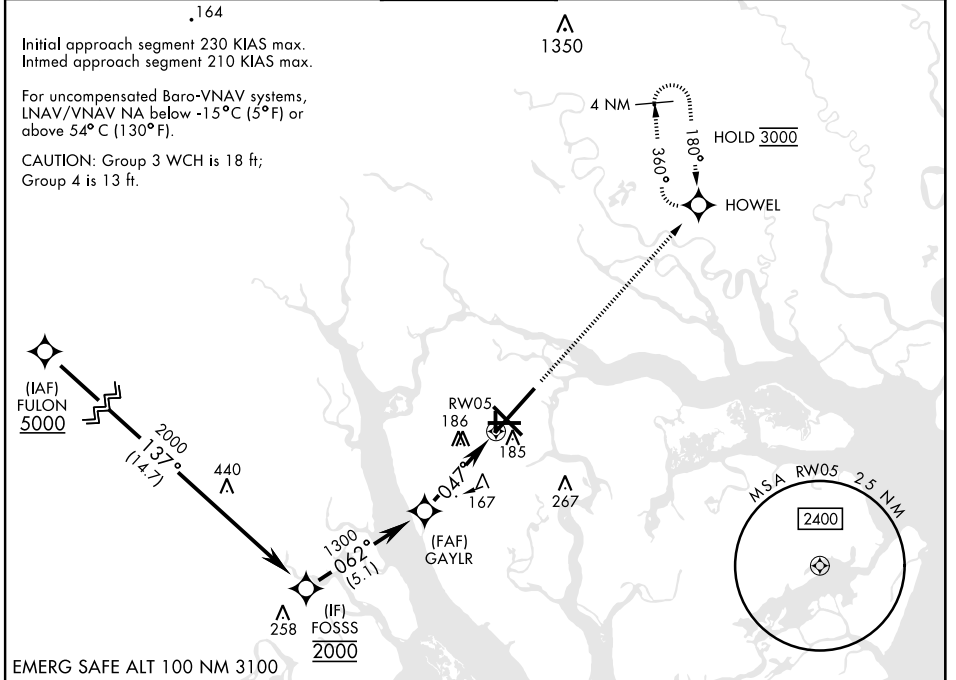


# RNAV (GPS) RWY 5

WAAS Chan <b>90095</b> <b>W05A</b>	APCH CRS <b>047°</b>	Rwy Idg <b>12,202</b> TDZE <b>37</b> Arpt Elev <b>37</b>	[USN]	BEAUFORT MCAS (MERRITT FLD) (KNBC)
--	-------------------------	--	-------	------------------------------------

RNP APCH	SALSF <b>A2</b>	MISSED APPROACH: Climb to 3000 direct HOWEL and hold, continue climb-in-hold to 3000.
RADAR required * When ALS inop, increase vis to 1 mile. ** When ALS inop, increase CAT AB vis to 1 mile, CAT CD to 1/2 miles.		

ATIS ★ <b>279.525</b>	APP CON <b>125.125 292.125</b> (ABV 3000) <b>123.7 269.125</b> (3000 and BLW)	TOWER★ <b>119.05 342.875</b>	GND CON <b>128.15 348.625</b>	CLNC DEL <b>128.15 254.375</b>	ASR/ PAR
--------------------------	---	---------------------------------	----------------------------------	-----------------------------------	-------------



# RNAV (GPS) RWY 5

SE-2, 31 OCT 2024 to 28 NOV 2024

SE-2, 31 OCT 2024 to 28 NOV 2024