

TACAN RWY 5

TACAN NBC Chan 42	APCH CRS 054°	Rwy ldg 12,202 TDZE 37 Arprt Elev 37
-----------------------------	-------------------------	---

[USN]

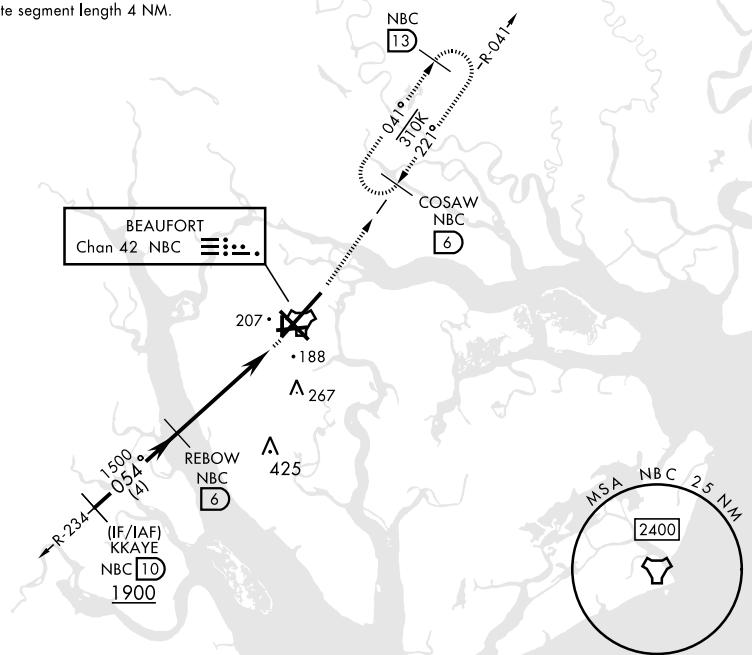
BEAUFORT MCAS (MERRITT FLD) (KNBC)

RADAR required	SALSF 	MISSED APPROACH: Climb to 1000, then climbing left turn to 3000 via NBC TACAN R-041 to COSAW and hold. Continue climb-in-hold to 3000.
<p>▼ * When ALS inop, increase CAT AB vis to 1 mile; CAT CDE vis to 1½ miles.</p>		

ATIS ★ 279.525	APP CON 125.125 292.125 (ABV 3000) 123.7 269.125 (3000 and BLW)	TOWER ★ 119.05 342.875	GND CON 128.15 348.625	CLNC DEL 128.15 254.375	ASR/PAR
--------------------------	---	----------------------------------	----------------------------------	-----------------------------------	---------

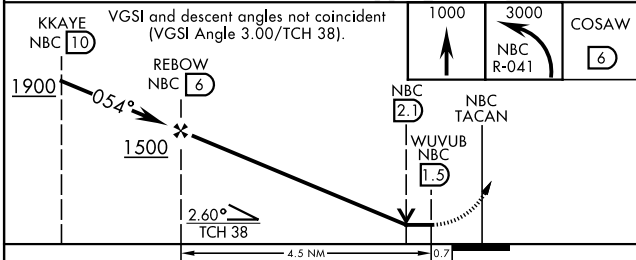
CAUTION: Intermediate segment length 4 NM.

154

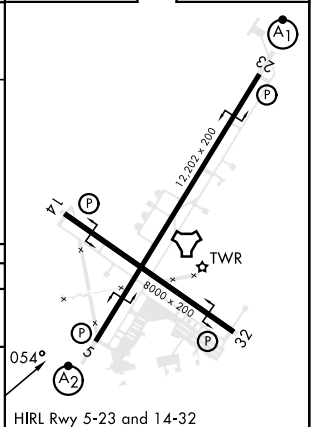


EMERG SAFE ALT 100 NM 3100

ELEV	37	TDZE	37
------	----	------	----



CATEGORY	A	B	C	D	E
S-5 *	480-¾	443 (500-¾)	480-1	443	(500-1)
CIRCLING	560-1	523 (600-1)	580-1½ 543 (600-1½)	600-2 563 (600-2)	740-2½ 703 (800-2½)



TACAN RWY 5

SE-2, 31 OCT 2024 to 28 NOV 2024

SE-2, 31 OCT 2024 to 28 NOV 2024