

OXNARD, CALIFORNIA

HI-TACAN Z RWY 21

POINT MUGU NAS (NAVAL BASE VENTURA CO) (KNTD)

TACAN NTD Chan 43	APCH CRS 216°	Rwy Idg 11,102 TDZE 13 Arpt Elev 13
----------------------	------------------	---

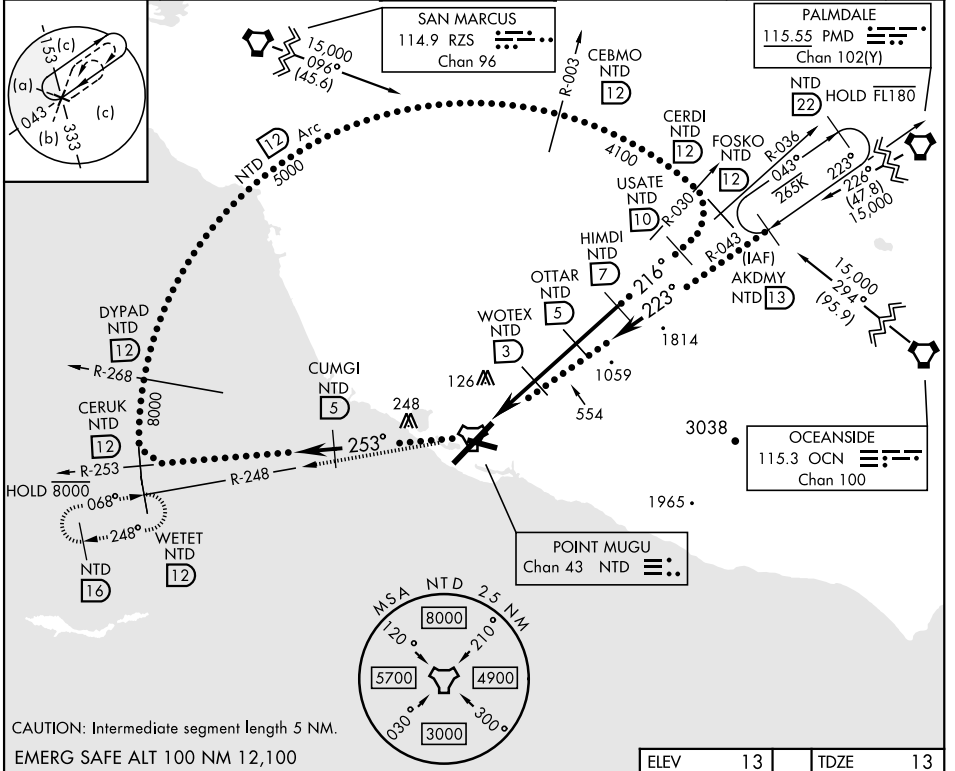
[USN]

▼ * When ALS inop, increase vis to 1 1/2 miles.
 ** Circling not authorized E of Rwy 3-21.



MISSED APPROACH: Climb to 5000 via NTD TACAN R-036 to NTD, then via NTD R-248 to WETET and hold, continue climb-in-hold to 5000.

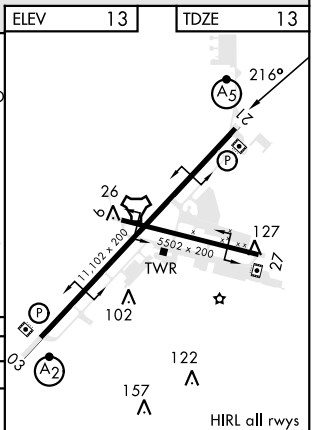
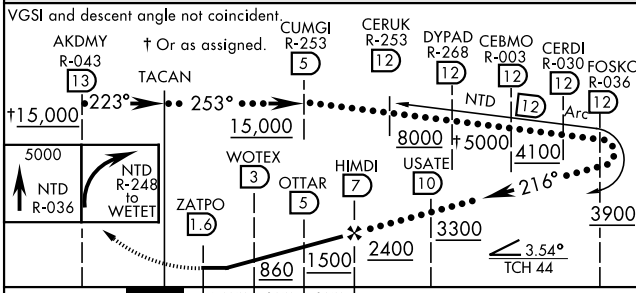
ATIS * 125.55 363.05	POINT MUGU APP CON 128.65 307.275	POINT MUGU TOWER * 124.85 290.375	GND CON 121.6 360.2	CLNC DEL 120.75 279.55	ASR/ PAR
-------------------------	--------------------------------------	--------------------------------------	------------------------	---------------------------	-------------



SW-3, 31 OCT 2024 to 28 NOV 2024

SW-3, 31 OCT 2024 to 28 NOV 2024

CAUTION: Intermediate segment length 5 NM.
 EMERG SAFE ALT 100 NM 12,100



ELEV	13	TDZE	13
CATEGORY	C	D	E
S-21*	480-1	467 (500-1)	
CIRCLING**	480-1 1/2 467 (500-1 1/2)	580-2 567 (600-2)	860-3 847 (900-3)

OXNARD, CALIFORNIA
 Amdt 3 31DEC20

34°07'N-119°07'W

POINT MUGU NAS (NAVAL BASE VENTURA CO) (KNTD)

HI-TACAN Z RWY 21