

WAAS CH <b>77915</b> <b>W08A</b>	APP CRS <b>077°</b>	Rwy Idg TDZE Apt Elev	<b>6118</b> <b>399</b> <b>403</b>
--	------------------------	-----------------------------	---

# RNAV (GPS) RWY 8

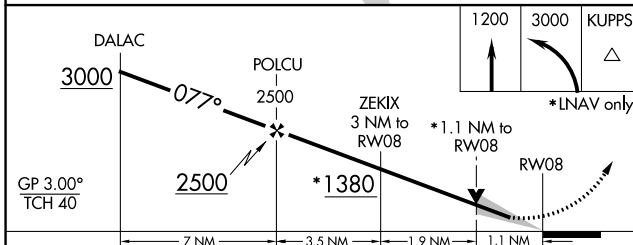
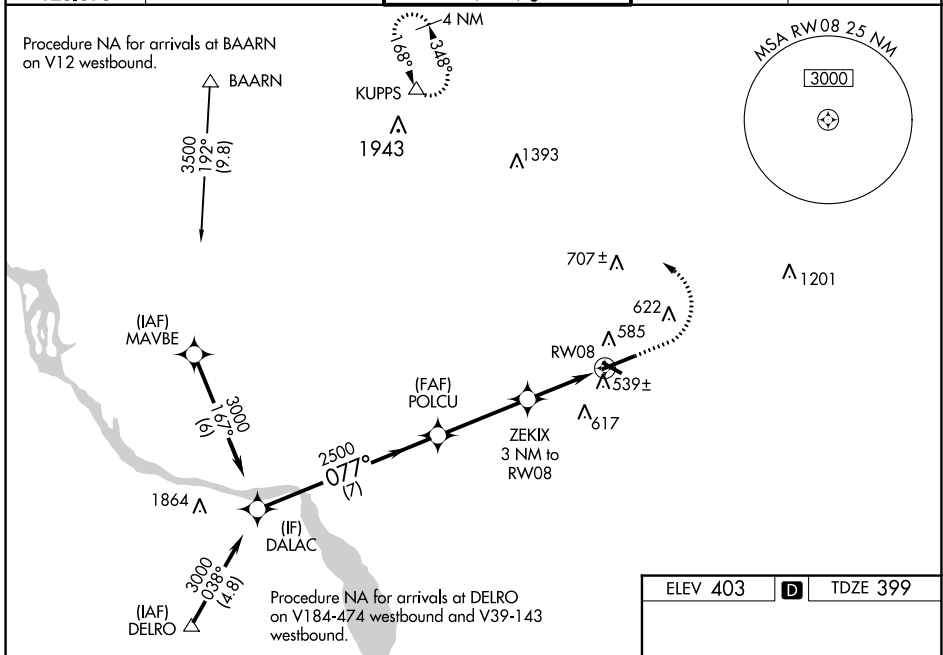
LANCASTER (LNS)

For uncompensated Baro-VNAV systems, LNAV/VNAV NA below -15°C (5°F) or above 54°C (130°F). DME/DME RNP-0.3 NA. When local altimeter setting not received, use Harrisburg Intl altimeter setting and increase all DA 64 feet and all MDA 80 feet, increase LNAV/VNAV all Cats visibility ¼ mile, LNAV and Circling Cats C and D visibility ¼ mile. Baro-VNAV and VDP NA when using Harrisburg Intl altimeter setting. Night landing: Rwy 13, 31 NA. For inoperative MALS R increase LNAV/VNAV all Cats visibility to 1 ¼ mile, and LNAV Cats C/D visibility to 1 ½ mile. For inoperative MALS R when using Harrisburg Intl altimeter setting, increase LPV all Cats visibility to ½ mile, LNAV/VNAV all Cats visibility to 1 ½ mile and LNAV Cats C/D visibility to 1 ½ mile.

**MALS R**

**MISSED APPROACH:**  
Climb to 1200 then climbing left turn to 3000 direct KUPPS and hold.

ATIS <b>125.675</b>	HARRISBURG APP CON <b>126.45 281.525</b>	<b>LANCASTER TOWER ★</b> <b>120.9 (CTAF) 251.1</b>	GND CON <b>121.8</b>	UNICOM <b>122.95</b>
------------------------	---	---	-------------------------	-------------------------



ELEV 403 **D** TDZE 399

Diagram of RWY 8 showing MALS R, TWX 476, and various navigation aids. Includes a note for 0.3% UP.

REIL Rwy 31 **1**  
HIRL Rwy 8-26 **1**  
MIRL Rwy 13-31 **1**

NE-4, 31 OCT 2024 to 28 NOV 2024

NE-4, 31 OCT 2024 to 28 NOV 2024