

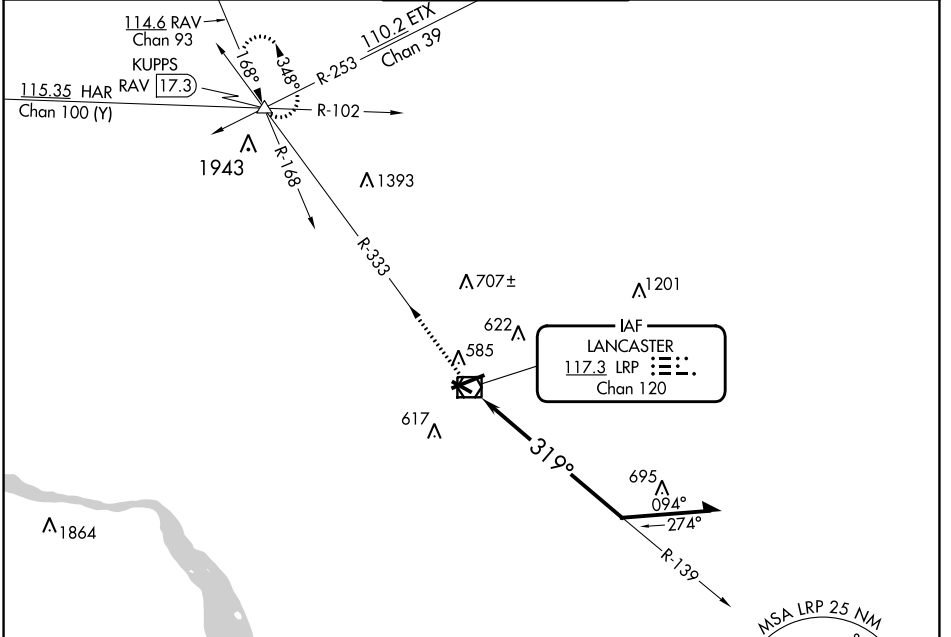
VOR/DME LRP <b>117.3</b> Chan <b>120</b>	APP CRS <b>319°</b>	Rwy Idg <b>4102</b> TDZE <b>403</b> Apt Elev <b>403</b>
--	------------------------	---

# VOR RWY 31

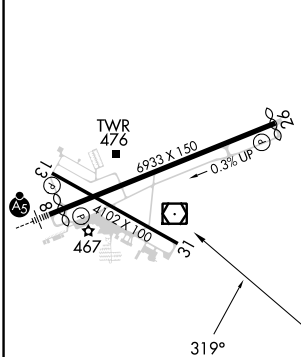
LANCASTER (LNS)

<p><b>⚠</b> Night landing: Rwy 13, 31 NA. <b>⚠</b> Helicopter visibility reduction below 1 SM NA.</p>	<p>MISSED APPROACH: Climb to 3000 via LRP VOR/DME R-333 to KUPPS INT/RAV 17.3 DME and hold.</p>
---	---

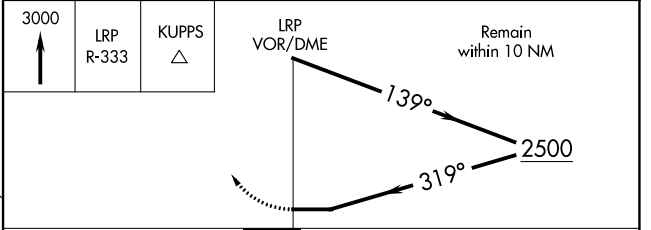
ATIS <b>125.675</b>	HARRISBURG APP CON <b>126.45 281.525</b>	LANCASTER TOWER★ <b>120.9 (CTAF) 251.1</b>	GND CON <b>121.8</b>	UNICOM <b>122.95</b>
------------------------	---	---	-------------------------	-------------------------



ELEV 403	<b>D</b>	TDZE 403
----------	----------	----------



3000	LRP R-333	KUPPS △	LRP VOR/DME	Remain within 10 NM
------	-----------	---------	-------------	---------------------



CATEGORY	A	B	C	D
S-31	1060-1	657 (700-1)	1060-1¾ 657 (700-1¾)	1060-2 657 (700-2)
CIRCLING	1060-1	657 (700-1)	1060-1¾ 657 (700-1¾)	1080-2¼ 677 (700-2¼)

NE-4, 31 OCT 2024 to 28 NOV 2024

NE-4, 31 OCT 2024 to 28 NOV 2024