

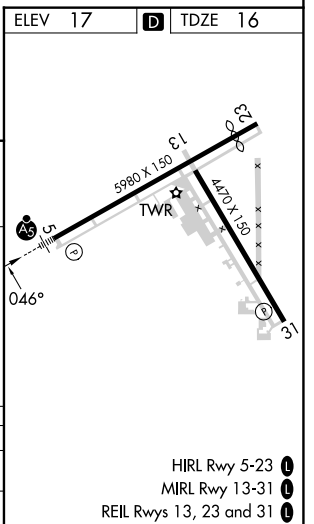
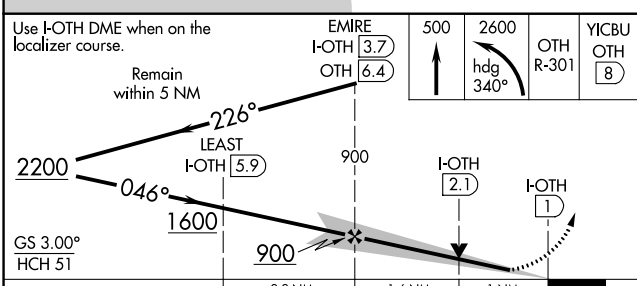
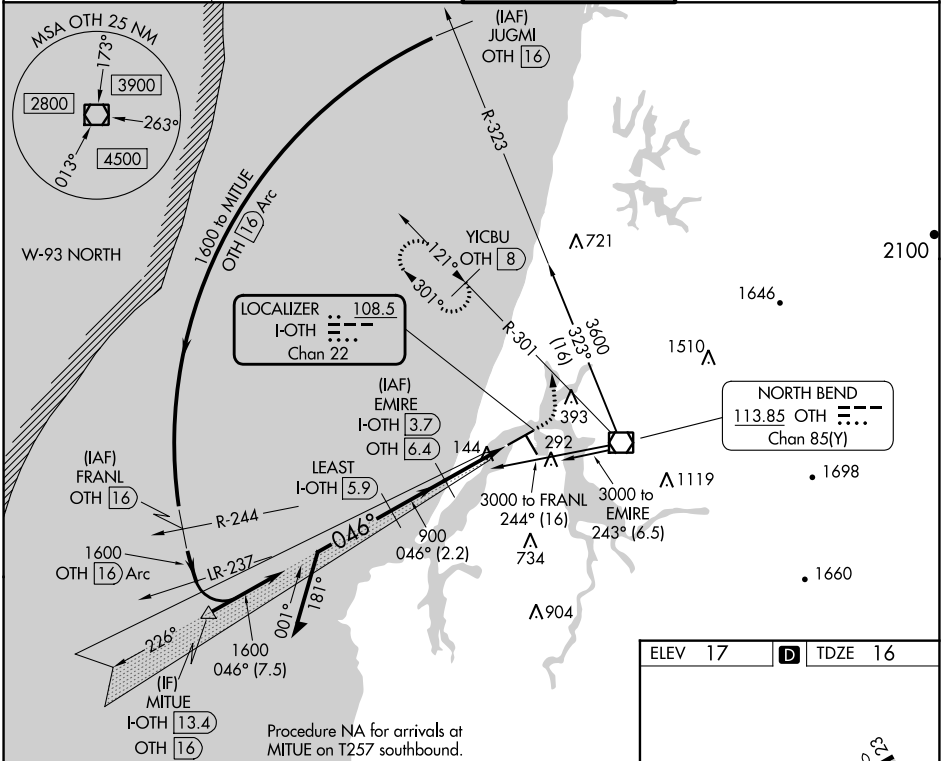
LOC/DME I-OTH <b>108.5</b> Chan 22	APP CRS <b>046°</b>	Rwy Idg TDZE <b>16</b> Apt Elev <b>17</b>	<b>5320</b>
--	------------------------	---	-------------

# COPTER ILS Y or LOC Y RWY 5

SOUTHWEST OREGON RGNL (OTH)

DME required.		MALS R	MISSED APPROACH: Climb to 500 then climbing left turn to 2600 on heading 340° and OTH VOR/DME R-301 to YICBU/OTH 8 DME and hold, continue climb-in-hold to 2600.
---------------	--	--------	--

AWOS-3PT <b>135.075</b>	SEATTLE CENTER <b>127.55 254.35</b>	NORTH BEND TOWER* <b>118.45 (CTAF) 0</b>	GND CON <b>127.1</b>
----------------------------	--	---	-------------------------



CATEGORY	COPTER	
H-ILS 5	216-½	200 (200-½)
H-LOC 5	400-½	384 (400-½)

NW-1, 31 OCT 2024 to 28 NOV 2024

NW-1, 31 OCT 2024 to 28 NOV 2024