

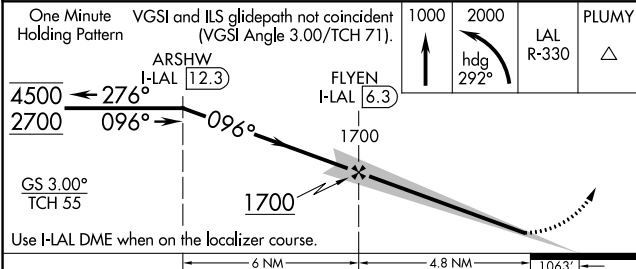
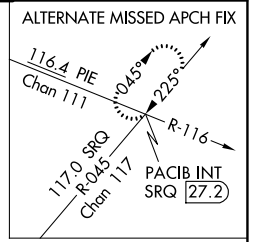
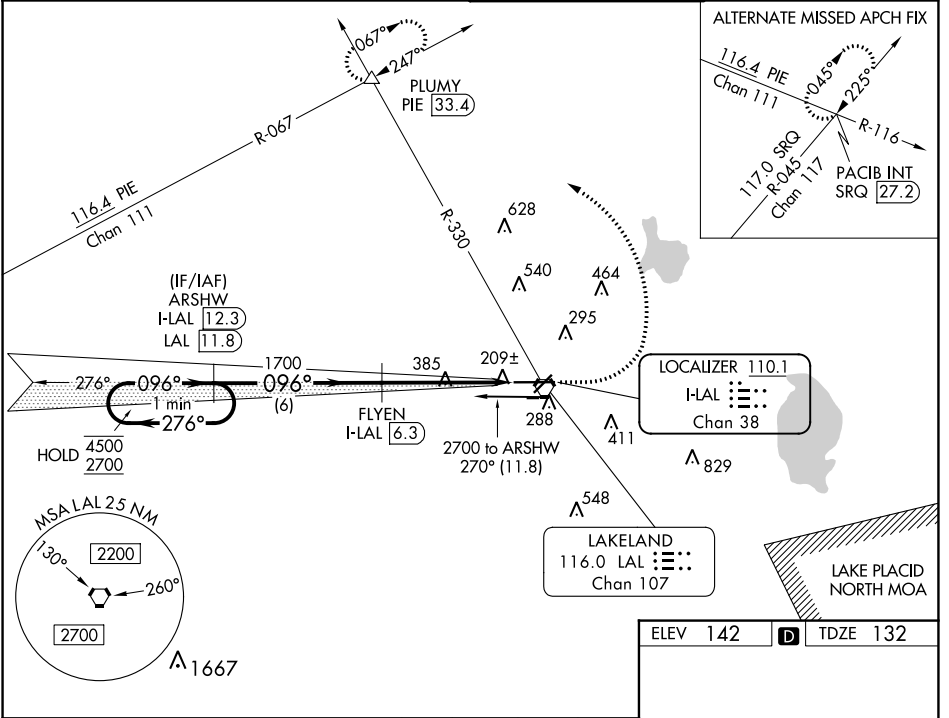
LOC/DME I-LAL 110.1 Chan 38	APP CRS 096°	Rwy Idg 8500 TDZE 132 Apt Elev 142
---	------------------------	---

ILS RWY 10 (SA CAT I)

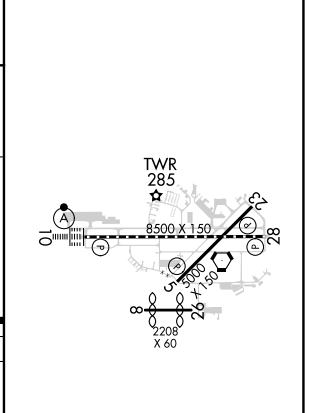
LAKELAND LINDER INTL (LAL)

DME required.	ALSF-2	MISSED APPROACH: Climb to 1000 then climbing left turn to 2000 on heading 292° and on LAL VORTAC R-330 to PLUMY INT/PIE 33.4 DME and hold.
Requires specific OPSPEC, MSPEC, or LOA approval.		

ATIS 118.025	TAMPA APP CON 120.65 290.3	LAKELAND TOWER 124.5 236.775	GND CON 121.4
------------------------	--------------------------------------	--	-------------------------



ELEV 142	TDZE 132
----------	----------



CATEGORY	A	B	C	D
S-ILS 10	RA 152/14 150 DA 282			

SA CATEGORY I ILS - SPECIAL AIRCREW & AIRCRAFT CERTIFICATION REQUIRED

TDZ/CL Rwy 10
HIRL Rwy 5-23 and 10-28

SE-3, 31 OCT 2024 to 28 NOV 2024

SE-3, 31 OCT 2024 to 28 NOV 2024