

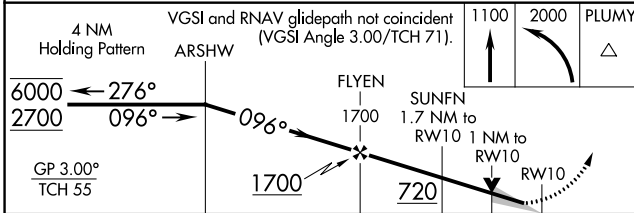
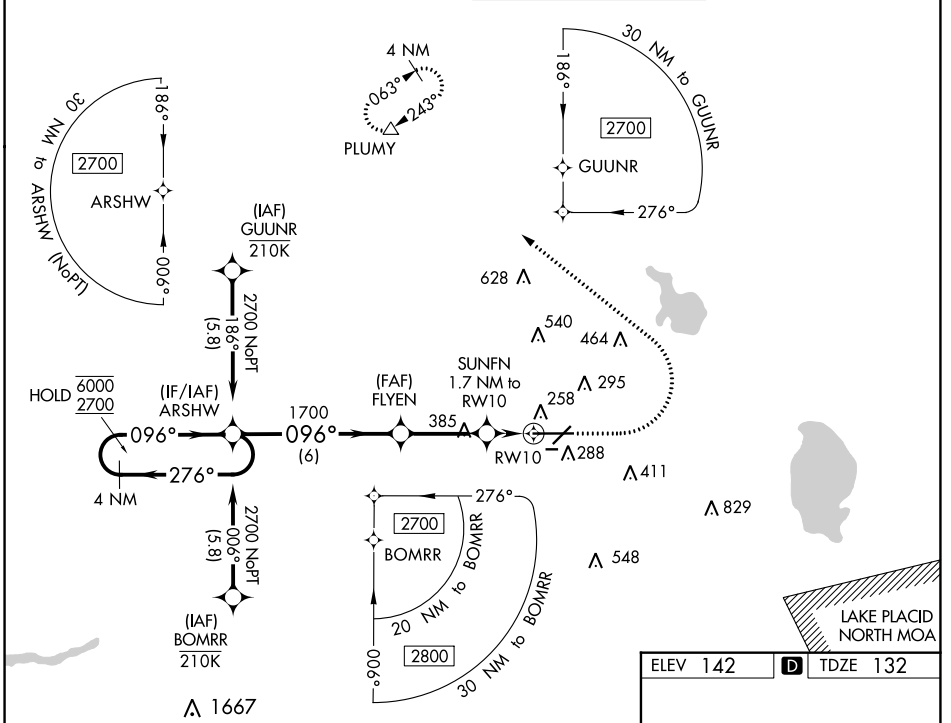
WAAS CH <b>78305</b> <b>W10A</b>	APP CRS <b>096°</b>	Rwy Idg TDZE <b>132</b> Apt Elev <b>142</b>	<b>8500</b>
--	------------------------	---	-------------

# RNAV (GPS) RWY 10

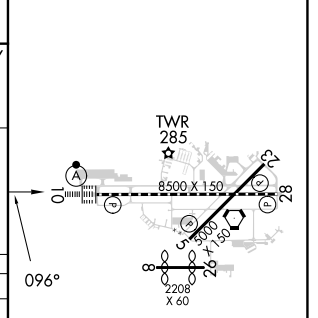
LAKELAND LINDER INTL (LAL)

RNP APCH-GPS.	ALSF-2	MISSED APPROACH: Climb to 1100 then climbing left turn to 2000 direct PLUMY and hold.
<p>⚠ Circling NA to Rwy's 8 and 26. For uncompensated Baro-VNAV systems, LNAV/VNAV NA below -15°C or above 54°C. For inop ALS, increase LNAV/VNAV all Cats visibility to RVR 4500.</p>		

ATIS <b>118.025</b>	TAMPA APP CON <b>120.65 290.3</b>	LAKELAND TOWER <b>124.5 236.775</b>	GND CON <b>121.4</b>
------------------------	--------------------------------------	--	-------------------------



ELEV 142	TDZE 132
----------	----------



CATEGORY	A	B	C	D
LPV DA		332/18	200 (200-½)	
LNAV/VNAV DA		439/24	307 (300-½)	
LNAV MDA	520/24	388 (400-½)	520/35	388 (400-¾)
CIRCLING	600-1 458 (500-1)	660-1 518 (600-1)	720-1½ 578 (600-1½)	840-2¼ 698 (700-2¼)

TDZ/CL Rwy 10 HIRL Rwy's 5-23 and 10-28
--

SE-3, 31 OCT 2024 to 28 NOV 2024

SE-3, 31 OCT 2024 to 28 NOV 2024