

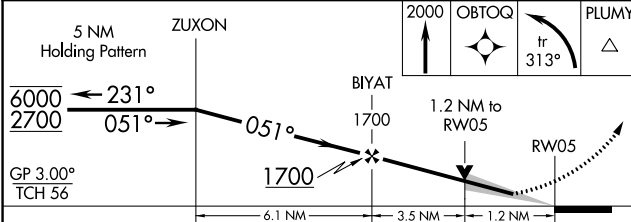
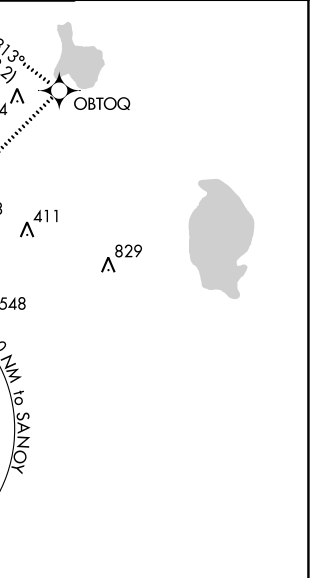
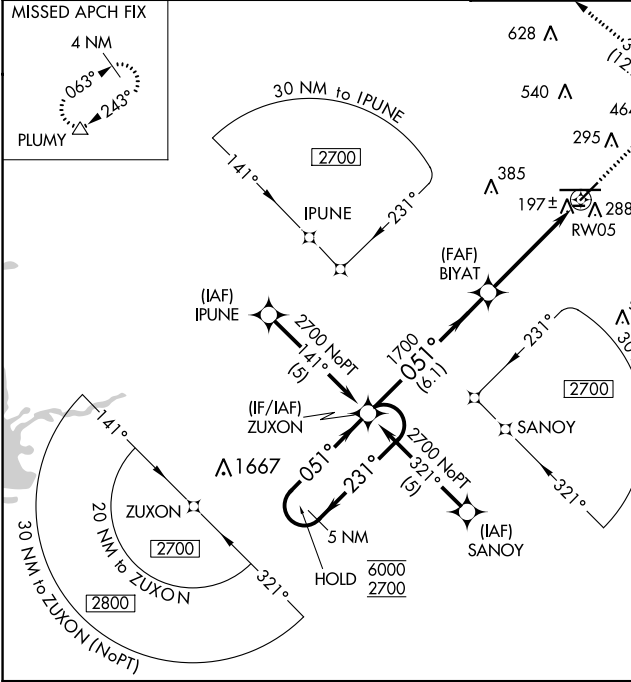
WAAS CH 42805 W05A	APP CRS 051°	Rwy Idg 5000 TDZE 136 Apt Elev 142
--	------------------------	---

RNAV (GPS) RWY 5

LAKELAND LINDER INTL (LAL)

RNP APCH.	<p>▼ For uncompensated Baro-VNAV systems, LNAV/VNAV NA below -15°C or above 54°C. ▲ When local altimeter setting not received, use Plant City altimeter setting: increase LPV DA to 354 feet; increase LNAV/VNAV DA to 523 feet; increase all MDA 20 feet and LNAV Cat C/D visibility 1/8 SM. Baro-VNAV and VDP NA when using Plant City altimeter setting. Circling NA to Rwys 8, 26.</p>	MISSED APPROACH: Climb to 2000 direct OBTOQ and left turn on track 313° to PLUMY and hold.
-----------	---	--

ATIS 118.025	TAMPA APP CON 120.65 290.3	LAKELAND TOWER 124.5 236.775	GND CON 121.4
------------------------	--------------------------------------	--	-------------------------



ELEV 142	TDZE 136
----------	----------

051°

TDZ/CL Rwy 10
HIRL Rwys 5-23 and 10-28

CATEGORY	A	B	C	D
LPV DA		336-3/4	200 (200-3/4)	
LNAV/VNAV DA		505-1 1/4	369 (400-1 1/4)	
LNAV MDA	560-1	424 (500-1)	560-1 1/4	424 (500-1 1/4)
CIRCLING	600-1 458 (500-1)	660-1 518 (600-1)	720-1 1/2 578 (600-1 1/2)	840-2 1/4 698 (700-2 1/4)

SE-3, 31 OCT 2024 to 28 NOV 2024

SE-3, 31 OCT 2024 to 28 NOV 2024