

APP CRS	Rwy Idg	8500
276°	TDZE	142
	Apt Elev	142

RNAV (RNP) Z RWY 28

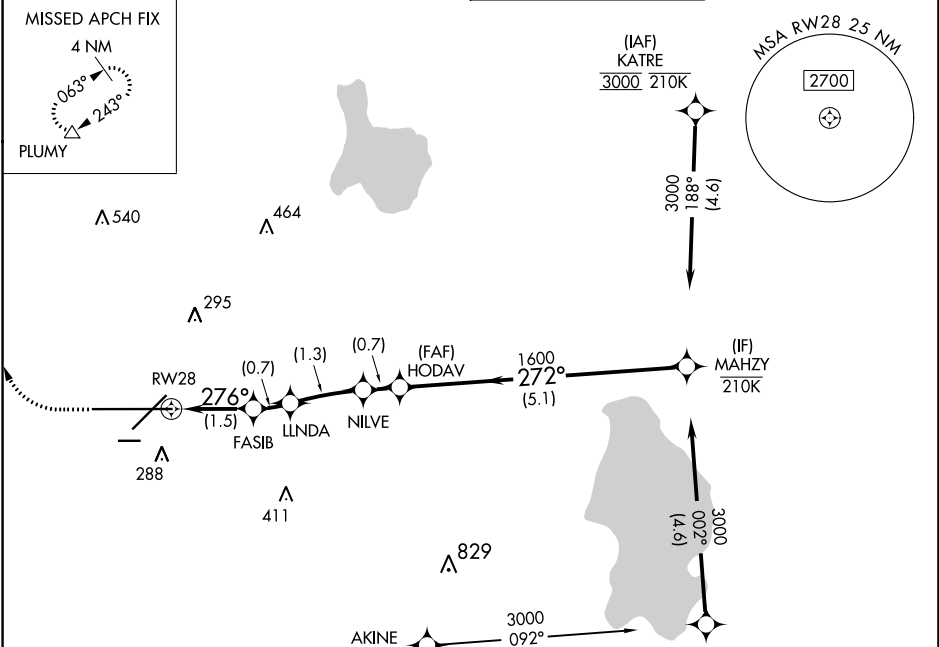
LAKELAND LINDER INTL (LAL)

RNP AR APCH - GPS.

MISSED APPROACH: Climb to 600 then climbing right turn to 2000 direct PLUMY and hold.

For uncompensated Baro-VNAV systems, procedure NA below -15°C or above 54°C.

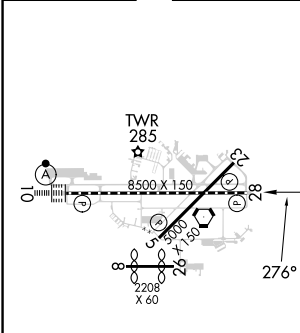
ATIS 118.025	TAMPA APP CON 120.65 290.3	LAKELAND TOWER 124.5 236.775	GND CON 121.4
------------------------	--------------------------------------	--	-------------------------



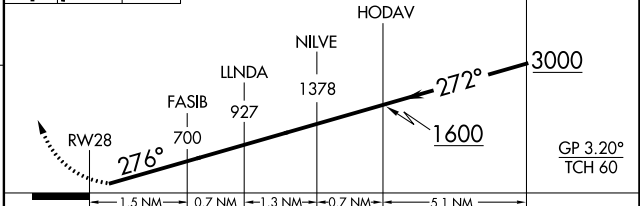
SE-3, 31 OCT 2024 to 28 NOV 2024

SE-3, 31 OCT 2024 to 28 NOV 2024

ELEV 142	D	TDZE 142
----------	----------	----------



600 2000 PLUMY VGSi and RNAV glidepath not coincident (VGSi Angle 3.00/TCH 71).



CATEGORY	A	B	C	D
----------	---	---	---	---

RNP 0.30 DA	507/55 365 (400-1)			
-------------	--------------------	--	--	--

AUTHORIZATION REQUIRED