

APP CRS	Rwy Idg	8500
270°	TDZE	142
	Apt Elev	142

RNAV (GPS) Y RWY 28

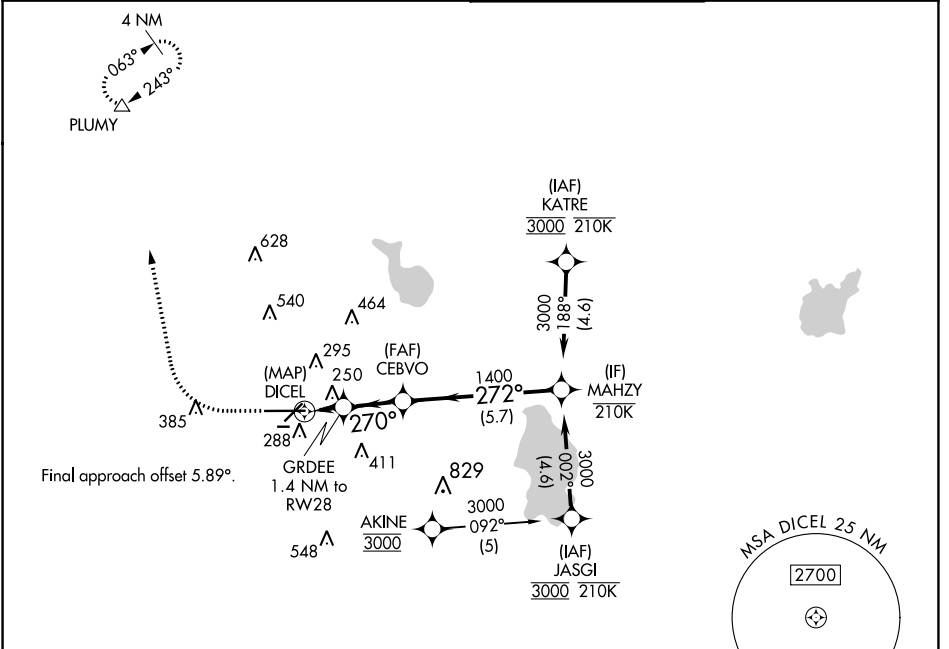
LAKELAND LINDER INTL (LAL)

RNP APCH - GPS.

⚠ Circling Rwy 08, 26 NA. For uncompensated Baro-VNAV systems, LNAV/VNAV NA below -15°C or above 54°C. Rwy 28 helicopter visibility reduction below RVR 4000 NA.

⚠ MISSED APPROACH: Climb to 600 then climbing right turn to 2000 direct PLUMY and hold.

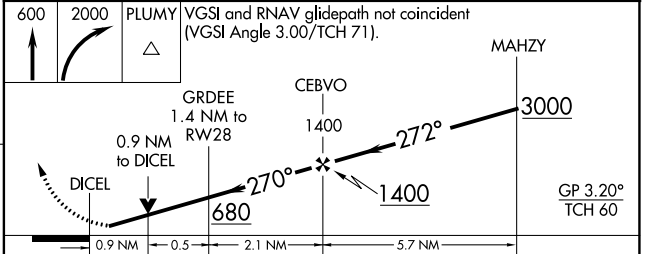
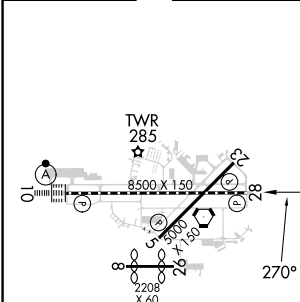
ATIS 118.025	TAMPA APP CON 120.65 290.3	LAKELAND TOWER 124.5 236.775	GND CON 121.4
------------------------	--------------------------------------	----------------------------------------	-------------------------



SE-3, 31 OCT 2024 to 28 NOV 2024

SE-3, 31 OCT 2024 to 28 NOV 2024

ELEV 142	D	TDZE 142
----------	----------	----------



CATEGORY	A	B	C	D
LNAV/VNAV DA		455/45	313 (400-7%)	
LNAV MDA		500/55	358 (400-1)	
CIRCLING	600-1	458 (500-1)	720-1½ 578 (600-1½)	840-2¼ 698 (700-2¼)

LAKELAND, FLORIDA
Orig 03OCT24

27°59'N-82°01'W

LAKELAND LINDER INTL (LAL)

RNAV (GPS) Y RWY 28