

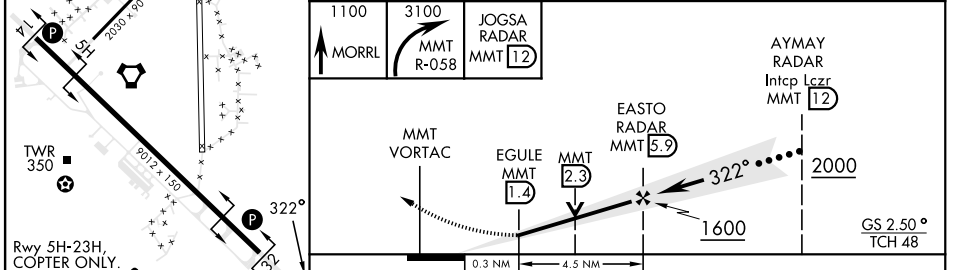
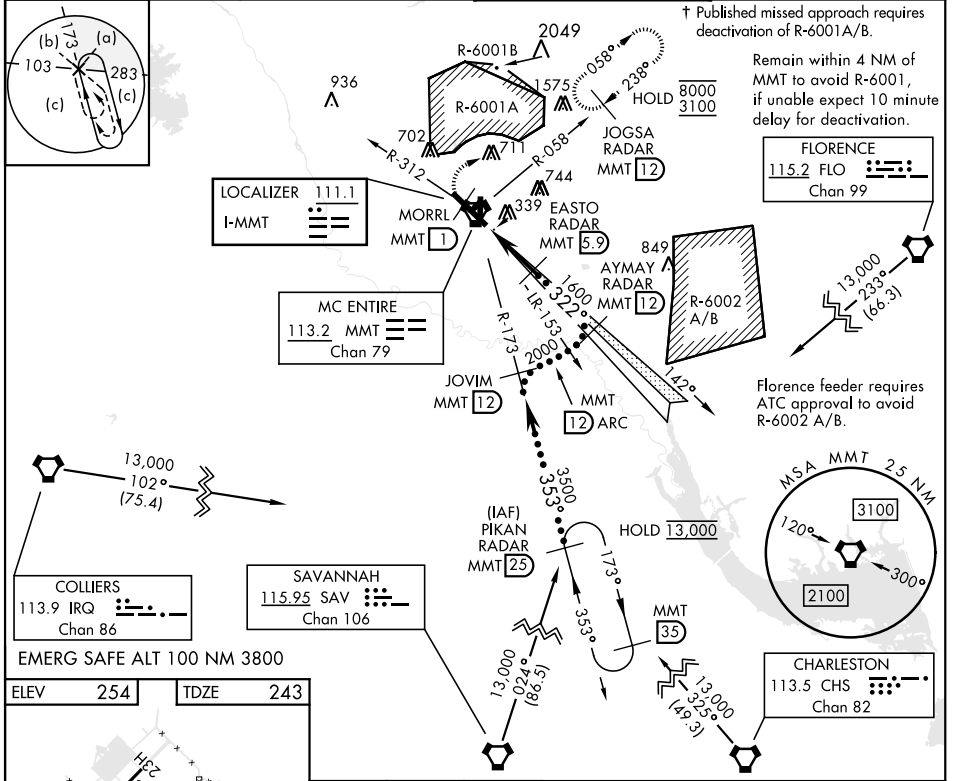
EASTOVER, SOUTH CAROLINA

HI-ILS or LOC/DME RWY 32

MC ENTIRE JNGB (KMMT)

LOC I-MMT 111.1	APCH CRS 322°	Rwy ldg TDZE 9012 243 Arprt Elev 254	[USAF]	ALSIF-1 	† MISSED APPROACH: Climb to 1100 direct MORRL/ 1 DME then climbing right turn to 3100 intercept MMT R-058 direct JOGSA/12 DME and hold.
---------------------------	-------------------------	---	--------	-------------	---

ATIS ★ 327.05	SHAW APP CON 125.4 318.1	TOWER★ 132.4 (CTAF) 253.5	GND CON 127.625 226.675
-------------------------	------------------------------------	-------------------------------------	-----------------------------------



ELEV 254 TDZE 243					
Rwy 5H-23H COPTER ONLY					
HIRL Rwy 14-32					
MIRL Rwy 5H-23H					
REIL Rwy 14					
FAF to MAP 4.5 NM					
Knots	120	140	160	180	200
Min:Sec	2:15	1:56	1:41	1:30	1:21
CIRCLING	C		D		E
S-ILS 32 *	443/24		200 (200-1/2)		
S-LOC 32 **	620/35		377 (400-5/8)		
	880-1 3/4 626 (700-1 3/4)		940-2 1/4 686 (700-2 1/4)		1020-2 3/4 766 (800-2 3/4)

EASTOVER, SOUTH CAROLINA
Amdt 4 25MAY17

33° 55' N-80° 48' W

MC ENTIRE JNGB (KMMT)

HI-ILS or LOC/DME RWY 32

SE-2, 31 OCT 2024 to 28 NOV 2024

SE-2, 31 OCT 2024 to 28 NOV 2024