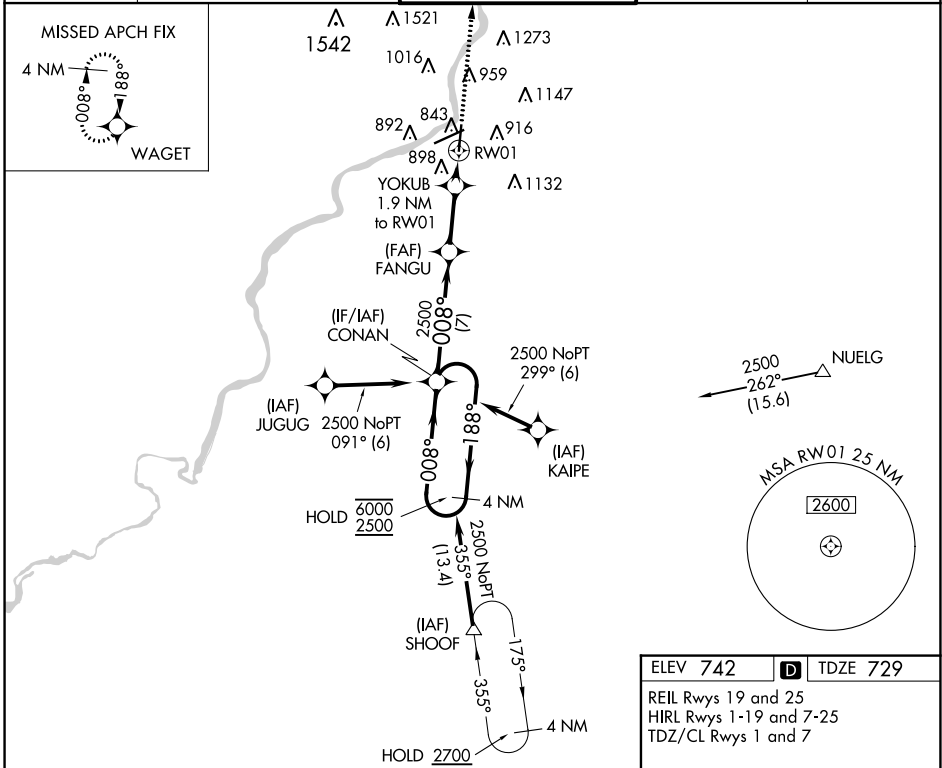


WAAS CH <b>42720</b> W01A	APP CRS <b>008°</b>	Rwy Idg <b>8199</b> TDZE <b>729</b> Apt Elev <b>742</b>
---------------------------------	------------------------	------------------------------------------------------------------------

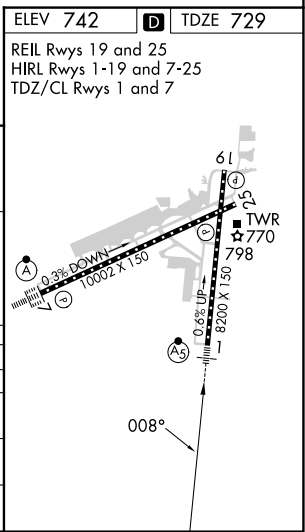
# RNAV (GPS) RWY 1

CHICAGO/ROCKFORD INTL (RFD)

RNP APCH - GPS.		ROCKFORD APP CON <b>121.0 327.0</b>		ROCKFORD TOWER <b>118.1 290.375</b>		GND CON <b>121.9 290.375</b>	CLNC DEL <b>119.25</b>
For uncompensated Baro-VNAV systems, procedure NA below -16°C or above 54°C. For inop ALS, increase LNAV Cats C and D visibility to RVR 6000. *RVR 1800 authorized with use of FD or AP or HUD to DA.					MALSR 		MISSED APPROACH: Climb to 2500 direct WAGET and hold.



4 NM Holding Pattern		CONAN	FANGU	YOKUB	WAGET
6000	←188°	008°	2500	1.9 NM to RW01	↑
2500	008°	2500	1340	1.1 NM to RW01	◆
GP 3.00°					
TCH 50					
		7 NM	3.6 NM	0.8	1.1
CATEGORY	A	B	C	D	
LPV DA*		929/24	200 (200-½)		
LNAV/VNAV DA		1200/60	471 (500-1¼)		
LNAV MDA	1120/24	391 (400-½)	1120/35	391 (400-¾)	
CIRCLING	1220-1 478 (500-1)	1280-1 538 (600-1)	1320-1½ 578 (600-1½)	1460-2¼ 718 (800-2¼)	



EC-3, 31 OCT 2024 to 28 NOV 2024

EC-3, 31 OCT 2024 to 28 NOV 2024