

WAAS CH <b>70410</b> <b>W22A</b>	APP CRS <b>216°</b>	Rwy Idg TDZE <b>1166</b> Apt Elev <b>1189</b>	<b>10000</b>
--	------------------------	---	--------------

# RNAV (GPS) Y RWY 22

GRANT COUNTY INTL (MWH)

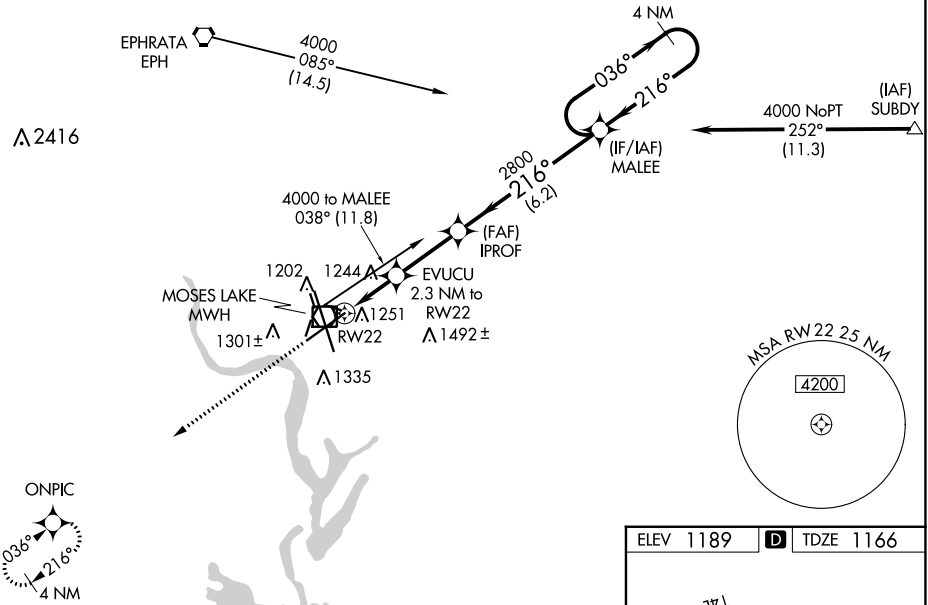
RNP APCH.

▼ For uncompensated Baro-VNAV systems, LNAV/VNAV NA below -17°C or above 36°C. Baro-VNAV and VDP NA when using Ephrata altimeter setting. When local altimeter setting not received, use Ephrata altimeter setting; increase all DA 36 feet and all MDA 40 feet, increase LNAV/VNAV all Cats visibility and LNAV Cats C and D visibility 1/8 SM and Circling Cat D visibility 1/4 SM.

MISSED APPROACH:  
Climb to 4000 direct ONPIC and hold.

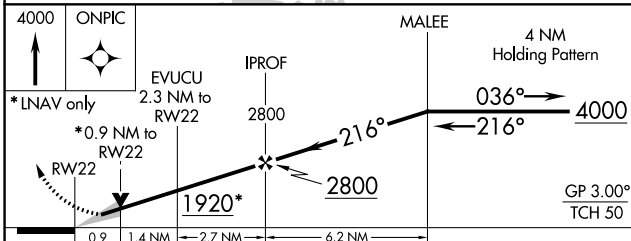
ATIS <b>119.05</b>	GRANT COUNTY APP CON * <b>126.4 379.95</b>	GRANT COUNTY TOWER * <b>118.25 (CTAF) 0 257.8 (EAST)</b> <b>128.0 257.8 (WEST)</b>	GND CON <b>121.9</b>	UNICOM <b>122.95</b>
-----------------------	---	--	-------------------------	-------------------------

Procedure NA for arrivals at EPH VORTAC on airway radials 060 CW 135.



NW-1, 31 OCT 2024 to 28 NOV 2024

NW-1, 31 OCT 2024 to 28 NOV 2024



CATEGORY	A	B	C	D
LPV DA		1366-3/4	200 (200-3/4)	
LNAV/VNAV DA		1429-7/8	263 (300-7/8)	
LNAV MDA		1500-1	334 (400-1)	
CIRCLING	1660-1	471 (500-1)	1680-1 1/2 491 (500-1 1/2)	1820-2 631 (700-2)

ELEV 1189 TDZE 1166

TWR 1299. Obstructions: 3327x75, 2938x75, 3503x200, 3500x90, 10000x100, 32R.

REIL Rwy 4  
REIL Rws 14L and 22  
HIRL Rwy 14L-32R  
MRL Rws 4-22 and 18-36