


WAAS CH 73036 W12A	APP CRS 115°	Rwy Idg TDZE Apt Elev	6000 1621 1648
--	------------------------	-----------------------------	---

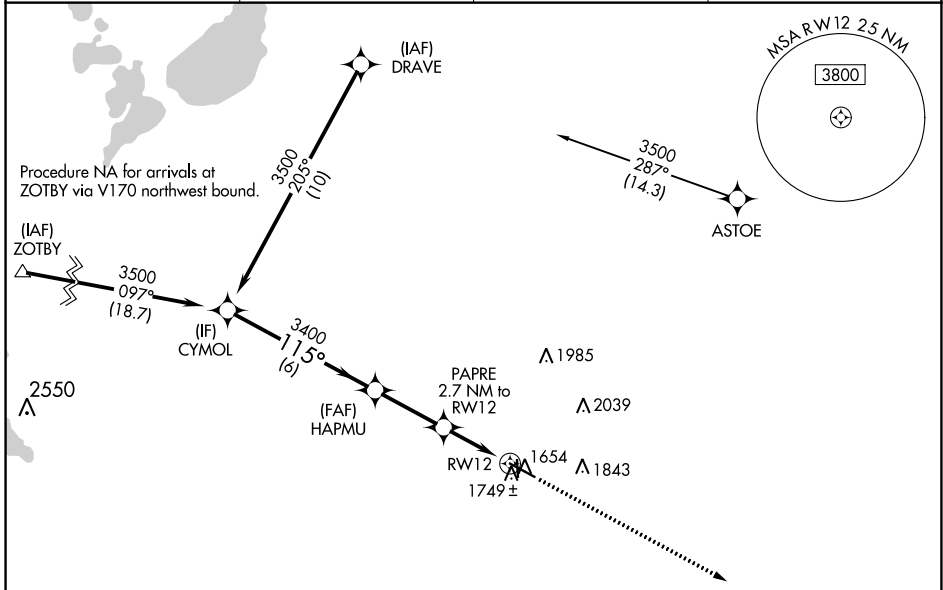
RNAV (GPS) RWY 12

BROOKINGS RGNL (BKK)

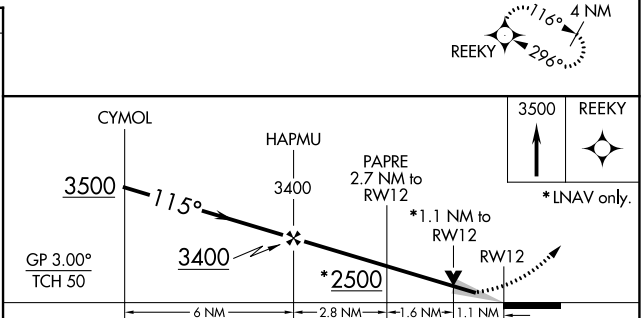
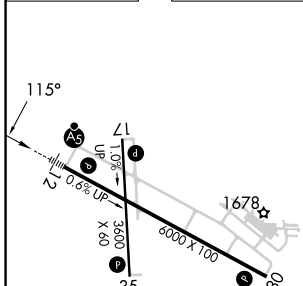
⚠ For uncompensated Baro-VNAV systems, LNAV/VNAV NA below -18°C (0°F) or above 54°C (130°F). DME/DME RNP-0.3 NA. When local altimeter setting not received, use Pipestone altimeter setting and increase all DA 81 feet and all MDA 100 feet; increase LNAV/VNAV all Cats visibility ¼ mile; LNAV Cats C and D visibility ⅜ mile; Circling Cats C and D visibility ¼ mile. Baro-VNAV and VDP NA when using Pipestone altimeter setting. Night landing Rwy 17 NA.

MALS

MISSED APPROACH:
 Climb to 3500 direct REEKY and hold.

AWOS-3PT 119.925	MINNEAPOLIS CENTER 132.05 317.4	GCO 121.725	UNICOM 123.0 (CTAF)
----------------------------	---	-----------------------	-------------------------------



ELEV 1648	D	TDZE 1621
-----------	----------	-----------



CATEGORY	A	B	C	D
LPV DA		1821-½	200 (200-½)	
LNAV/VNAV DA		1948-⅝	327 (300-⅝)	
LNAV MDA	2000-½	379 (400-½)	2000-⅝	379 (400-⅝)
C CIRCLING	2140-1 492 (500-1)	2160-1 512 (600-1)	2340-2 692 (700-2)	2340-2¼ 692 (700-2¼)

HIRL Rwy 12-30
 MIRL Rwy 17-35
 REL Rwy 17, 30 and 35

NC-1, 31 OCT 2024 to 28 NOV 2024

NC-1, 31 OCT 2024 to 28 NOV 2024