

WAAS CH <b>86829</b> <b>W21A</b>	APP CRS <b>210°</b>	Rwy Idg TDZE Apt Elev	<b>5204</b> <b>708</b> <b>708</b>
--	------------------------	-----------------------------	---

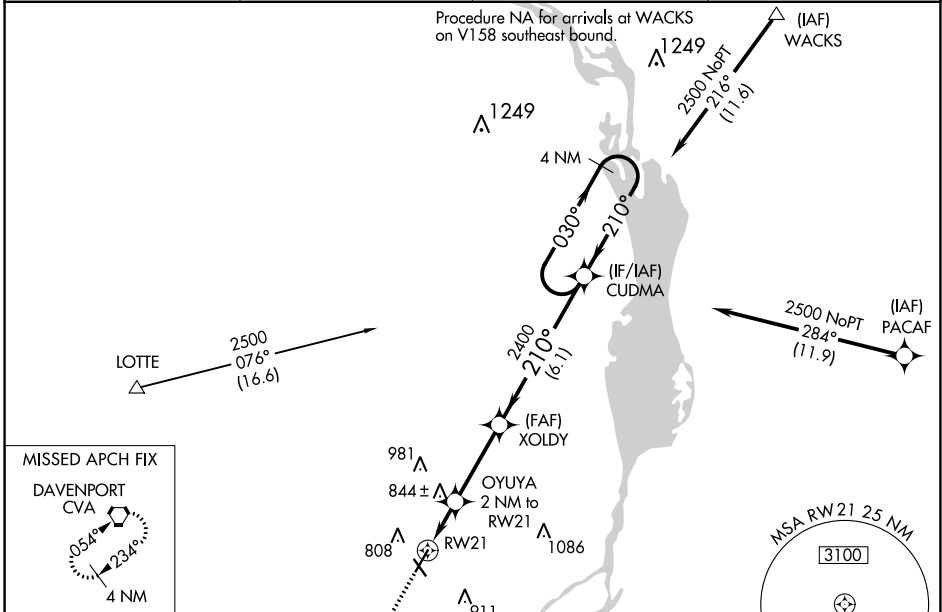
# RNAV (GPS) RWY 21

CLINTON MUNI (CWI)

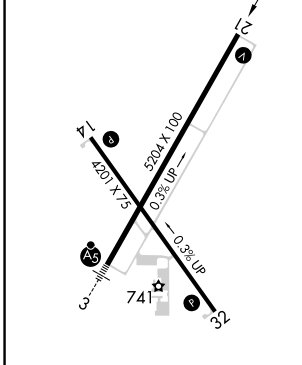
**⚠** Rwy 21 helicopter visibility reduction below 3/4 SM NA. Baro-VNAV NA when using Davenport altimeter setting. For uncompensated Baro-VNAV systems, LNAV/VNAV NA below -16°C (4°F) or above 54°C (130°F). DME/DME RNP-0.3 NA. When local altimeter setting not received, use Davenport altimeter setting: increase all DA 47 feet and all MDA 60 feet. Increase LNAV Cat C visibility 1/4 mile.

**MISSED APPROACH:** Climb to 3000 direct WIKES and on track 234° to CVA VORTAC and hold.

AWOS-3PT <b>125.525</b>	QUAD CITY APP CON ★ <b>125.95 257.8</b>	CLNC DEL <b>118.5 0</b>	UNICOM <b>122.8</b> (CTAF)
----------------------------	--	----------------------------	-------------------------------



ELEV 708	<b>D</b>	TDZE 708
----------	----------	----------



3000	WIKES	tr 234°	CVA	VGSI and RNAV glidepath not coincident (VGSI Angle 3.00/TCH 34).
*LNAV only	OYUYA 2 NM to RW21	XOLDY 2400	CUDMA	4 NM Holding Pattern
RW21	1380*	2400	2500	GP 3.00° TCH 40
	2 NM	3.2 NM	6.1 NM	

CATEGORY	A	B	C	D
LPV DA	958-1	250 (300-1)		NA
LNAV/VNAV DA	958-1	250 (300-1)		NA
LNAV MDA	1100-1	392 (400-1)	1100-1 1/8 392 (400-1 1/8)	NA
<b>C</b> CIRCLING	1140-1 432 (500-1)	1240-1 532 (600-1)	1240-1 1/2 532 (600-1 1/2)	NA

- REIL Rwy 14 and 21 **0**
- MIRL Rwy 14-32 **0**
- HIRL Rwy 3-21 **0**

NC-3, 31 OCT 2024 to 28 NOV 2024

NC-3, 31 OCT 2024 to 28 NOV 2024