

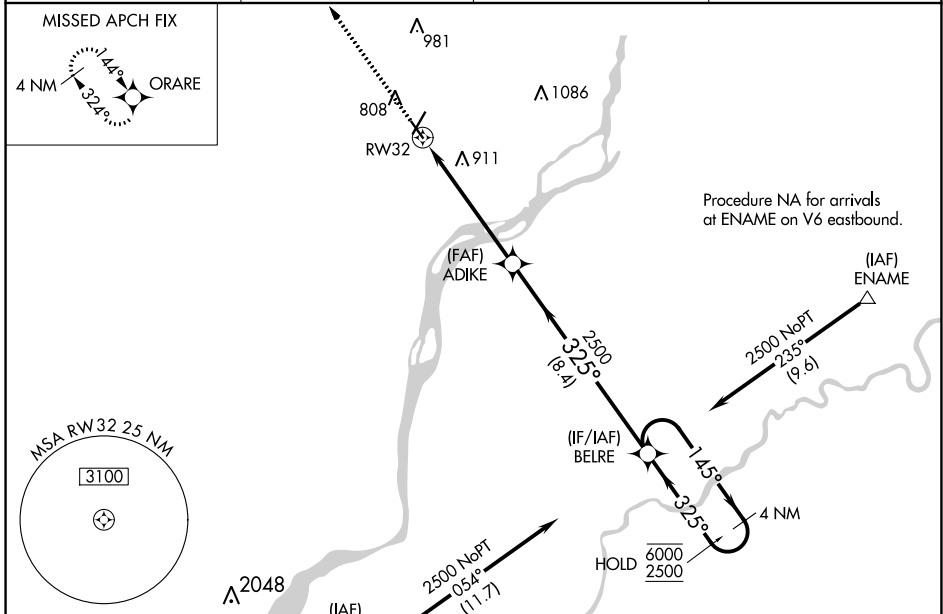
WAAS CH <b>77629</b> <b>W32A</b>	APP CRS <b>325°</b>	Rwy Idg TDZE Apt Elev	<b>4200</b> <b>697</b> <b>708</b>
--	------------------------	-----------------------------	---

# RNAV (GPS) RWY 32

CLINTON MUNI (CWI)

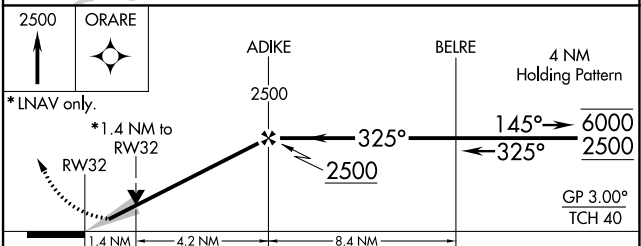
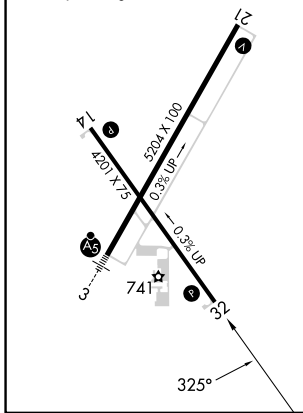
RNP APCH.	MISSED APPROACH: Climb to 2500 direct ORARE and hold.
<p>For uncompensated Baro-VNAV systems, LNAV/VNAV NA below -16°C or above 54°C.</p>	

AWOS-3PT <b>125.525</b>	QUAD CITY APP CON * <b>125.95 257.8</b>	CLNC DEL <b>118.5</b>	UNICOM <b>122.8</b> (CTAF)
----------------------------	--	--------------------------	-------------------------------



ELEV <b>708</b>	<b>D</b>	TDZE <b>697</b>
-----------------	----------	-----------------

REIL Rwys 14 and 21  
MIRL Rwy 14-32  
HIRL Rwy 3-21



CATEGORY	A	B	C	D
LPV DA	947-1 250 (300-1)			NA
LNAV/VNAV DA	1205-1 <sup>3</sup> / <sub>8</sub> 508 (500-1 <sup>3</sup> / <sub>8</sub> )			NA
LNAV MDA	1180-1	483 (500-1)	1180-1 <sup>3</sup> / <sub>8</sub> 483 (500-1 <sup>3</sup> / <sub>8</sub> )	NA
<b>C</b> CIRCLING	1180-1 472 (500-1)	1240-1 532 (600-1)	1240-1 <sup>1</sup> / <sub>2</sub> 532 (600-1 <sup>1</sup> / <sub>2</sub> )	NA

NC-3, 31 OCT 2024 to 28 NOV 2024

NC-3, 31 OCT 2024 to 28 NOV 2024