

APP CRS 239°	Rwy Idg 6006
	TDZE 193
	Apt Elev 212

RNAV (RNP) Y RWY 24

TRENTON MERCER (TTN)

▼ For uncompensated Baro-VNAV systems, procedure NA below -13°C (8°F) or above 54°C (130°F).
When VGSI inop, procedure NA at night.
RF required.
GPS required.

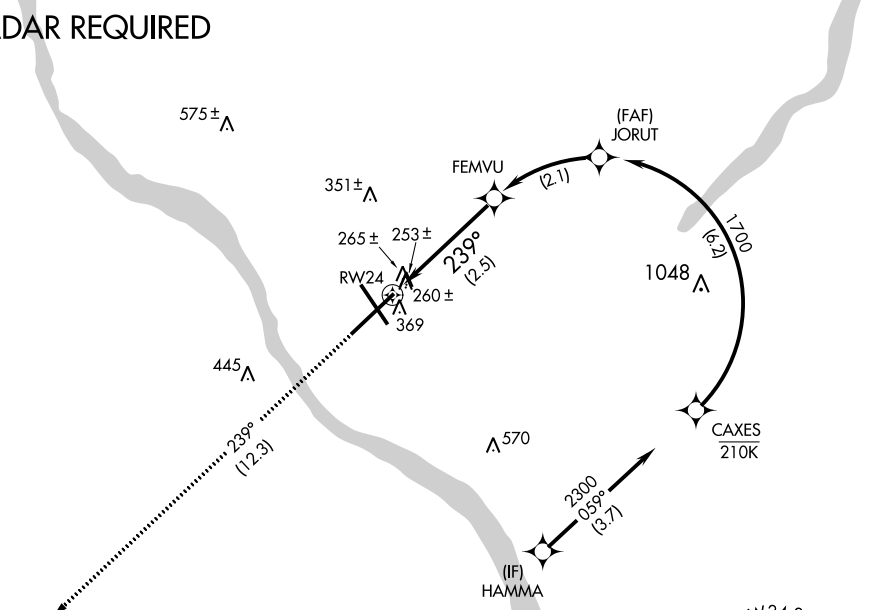
MISSED APPROACH: Climb to 2700 on track 239° to ZUBAX and hold.

ATIS 126.775	PHILADELPHIA APP CON 123.8 291.7	TRENTON TOWER ★ 120.7 (CTAF) 257.8	GND CON 121.9 257.8	CLNC DEL 121.9 257.8	UNICOM 122.95
------------------------	--	--	-------------------------------	--------------------------------	-------------------------

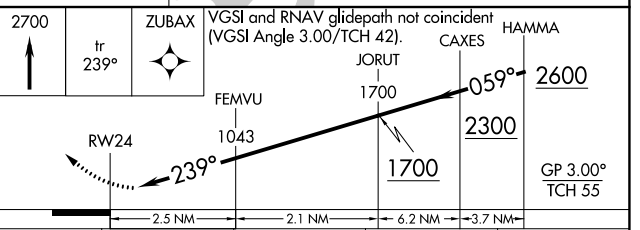
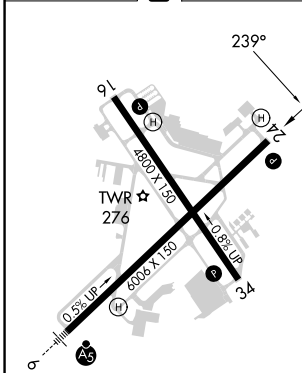
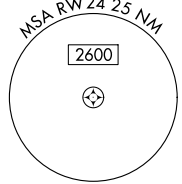
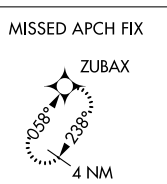
RADAR REQUIRED

NE-2, 31 OCT 2024 to 28 NOV 2024

NE-2, 31 OCT 2024 to 28 NOV 2024



ELEV 212	D	TDZE 193
----------	---	----------



CATEGORY	A	B	C	D
RNP 0.10 DA		641-1½	448 (500-1½)	
RNP 0.30 DA		741-1½	548 (600-1½)	

HIRL Rwy 6-24 and 16-34
REIL Rwy 16, 24 and 34

AUTHORIZATION REQUIRED