

| | | | |
|--|------------------------|---|-------------|
| WAAS CH 97530 W24A | APP CRS 239° | Rwy Idg TDZE 193 Apt Elev 213 | 6006 |
|--|------------------------|---|-------------|

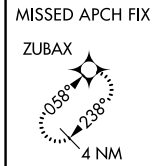
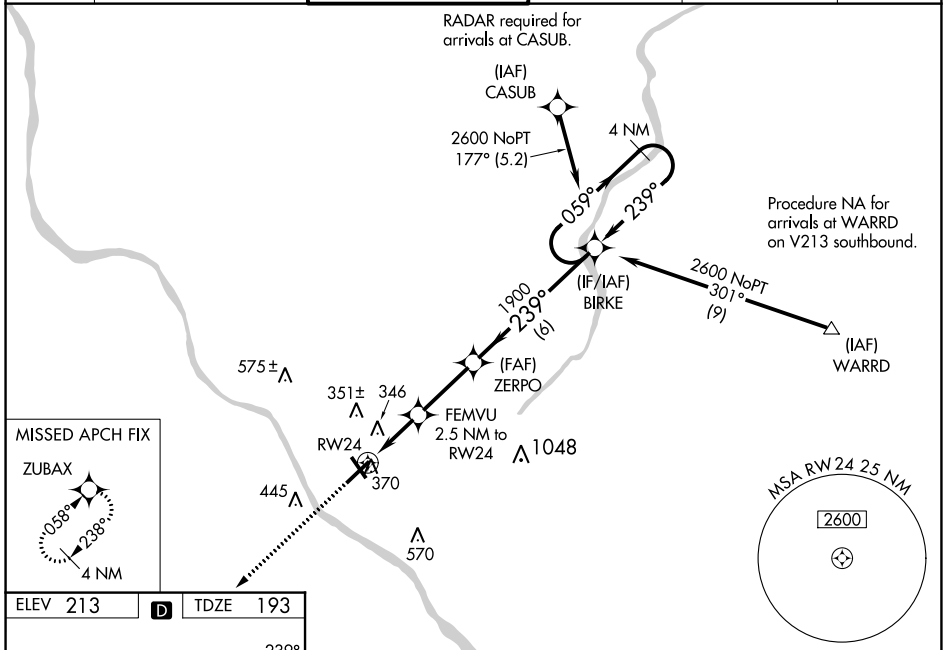
RNAV (GPS) Z RWY 24

TRENTON MERCER (TTN)

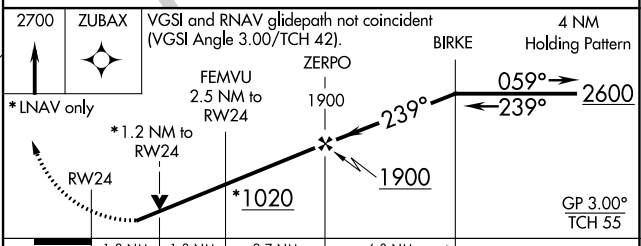
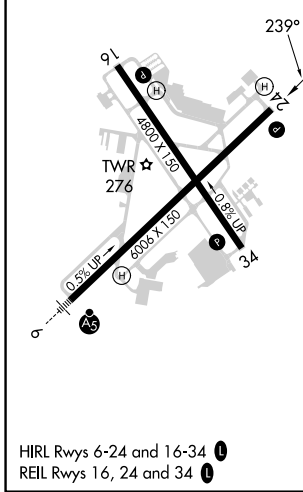
⚠ Baro-VNAV NA when using Northeast Philadelphia altimeter setting. For uncompensated Baro-VNAV systems, LNAV/VNAV NA below -13°C (8°F) or above 54°C (130°F). DME/DME RNP-0.3 NA. When local altimeter setting not received, use Northeast Philadelphia altimeter setting: increase LPV DA to 626 feet and LNAV/VNAV DA to 677 feet and all visibilities ½ mile; increase all MDA 60 feet and LNAV Cats C and D visibilities ½ mile and Circling visibility Cat C ¼ mile. VDP NA with Northeast Philadelphia altimeter setting. Helicopter visibility reduction below ¾ SM NA. Night Landing: Rwy 34 operational VGSI required, remain on or above VGSI glidepath until threshold.

MISSED APPROACH:
Climb to 2700 direct ZUBAX and hold.

| | | | | | |
|------------------------|--|--|-------------------------------|--------------------------------|-------------------------|
| ATIS 126.775 | PHILADELPHIA APP CON 123.8 291.7 | TRENTON TOWER ★ 120.7 (CTAF) 0 257.8 | GND CON 121.9 257.8 | CLNC DEL 121.9 257.8 | UNICOM 122.95 |
|------------------------|--|--|-------------------------------|--------------------------------|-------------------------|



| | | |
|-----------------|----------|-----------------|
| ELEV 213 | D | TDZE 193 |
|-----------------|----------|-----------------|



| CATEGORY | A | B | C | D |
|-------------------|-------|-------------|---------------------|---------------------|
| LPV DA | | 580-1¼ | 387 (400-1¼) | |
| LNAV/VNAV DA | | 631-1½ | 438 (500-1½) | |
| LNAV MDA | 620-1 | 428 (500-1) | 620-1¼ 428 (500-1¼) | |
| C CIRCLING | 680-1 | 467 (500-1) | 760-1½ 547 (600-1½) | 960-2½ 747 (800-2½) |

NE-2, 31 OCT 2024 to 28 NOV 2024

NE-2, 31 OCT 2024 to 28 NOV 2024