

APP CRS <b>146°</b>	Rwy Idg TDZE Apt Elev	<b>6301</b> <b>1333</b> <b>1333</b>
------------------------	-----------------------------	---

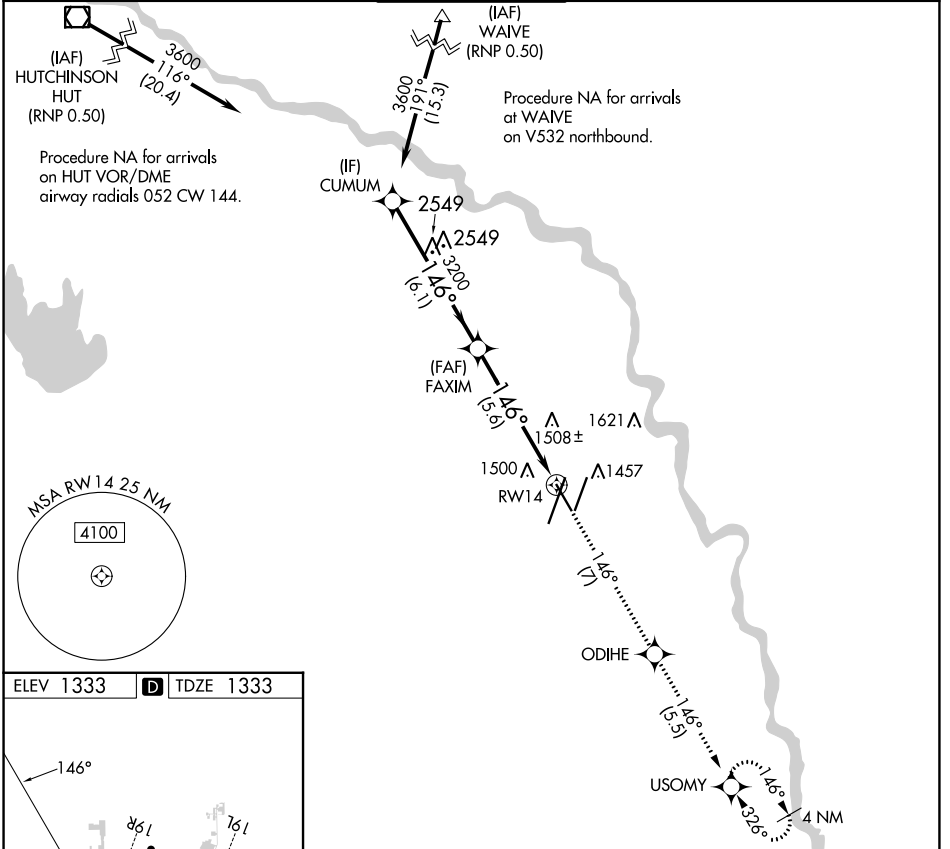
# RNAV (RNP) Z RWY 14

WICHITA DWIGHT D EISENHOWER NTL (ICT)

**▼** For uncompensated Baro-VNAV systems, procedure NA below -15°C ( 5°F) or above 54°C (130°F). GPS required.

MISSED APPROACH: Climb to 3600 on track 146° to ODIHE and on track 146° to USOMY and hold.

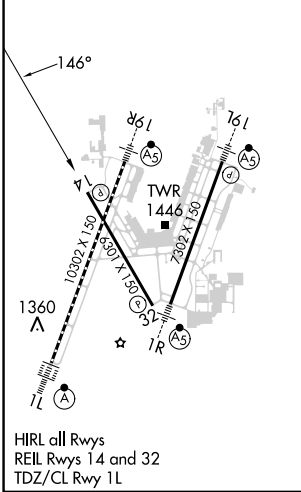
ATIS <b>125.15</b>	WICHITA APP CON <b>126.7 353.5</b>	WICHITA TOWER <b>118.2 257.8</b>	GND CON <b>121.9 348.6</b>	CLNC DEL <b>125.7</b>
-----------------------	---------------------------------------	-------------------------------------	-------------------------------	--------------------------



NC-2, 31 OCT 2024 to 28 NOV 2024

NC-2, 31 OCT 2024 to 28 NOV 2024

ELEV 1333	<b>D</b>	TDZE 1333
-----------	----------	-----------



VGSi and RNAV glidepath not coincident (VGSi Angle 3.00/TCH 50).		3600 tr 146°	ODIHE	tr 146°	USOMY
CUMUM	FAXIM				
3600	3200	RW14			
GP 3.00° TCH 50	6.1 NM	5.6 NM			
CATEGORY	A	B	C	D	
RNP 0.11 DA	1682-1 1/8 349 (400-1 1/8)				
RNP 0.30 DA	1732-1 1/8 399 (400-1 1/8)				
<b>AUTHORIZATION REQUIRED</b>					