

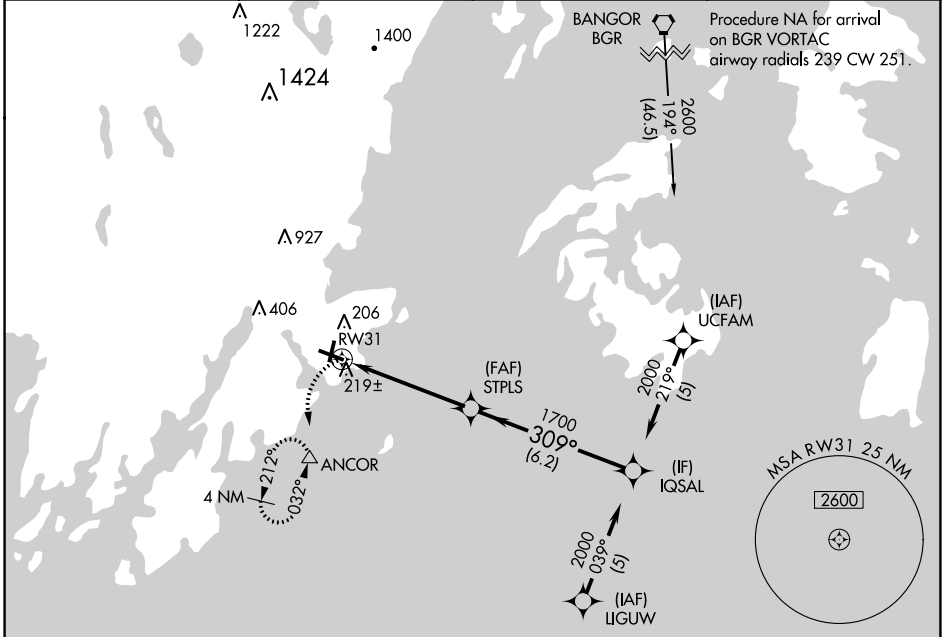
APP CRS	Rwy Idg	<b>5412</b>
<b>309°</b>	TDZE	<b>55</b>
	Apt Elev	<b>55</b>

# RNAV (GPS) RWY 31

KNOX COUNTY RGNL (R.KD)

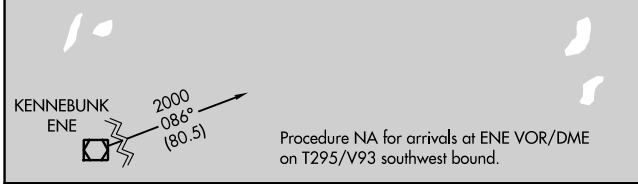
RNP APCH.		MISSED APPROACH: Climbing left turn to 2000 direct ANCOR and hold, continue climb-in-hold to 2000.
<b>▽</b> <b>▲</b>	Rwy 31 helicopter visibility reduction below ¾ SM NA.	

AWOS-3PT <b>119.025</b>	PORTLAND APP CON ★ <b>120.4 299.2</b>	CLNC DEL <b>123.8</b>	UNICOM <b>123.05</b> (CTAF) <b>📻</b>
----------------------------	--	--------------------------	---

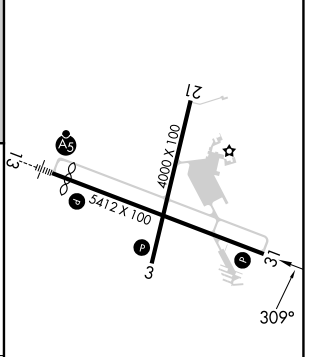
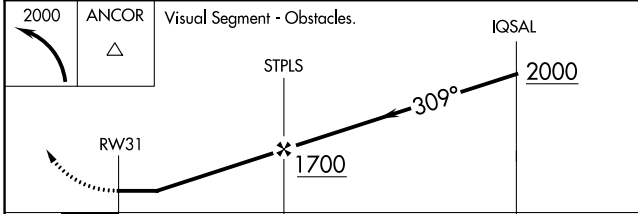


NE-1, 31 OCT 2024 to 28 NOV 2024

NE-1, 31 OCT 2024 to 28 NOV 2024



ELEV	55	<b>D</b>	TDZE	55
------	----	----------	------	----



CATEGORY	A	B	C	D
LNVA MDA	480-1	425 (500-1)	480-1¼	425 (500-1¼)
<b>C</b> CIRCLING	580-1	525 (600-1)	720-1¾ 665 (700-1¾)	1140-3 1085 (1100-3)

- REIL Rwy 3 and 31 **📻**
- MIRL Rwy 3-21 **📻**
- HIRL Rwy 13-31 **📻**