

WAAS CH 56209 W01A	APP CRS 004°	Rwy Idg TDZE 140 Apt Elev 141	5992
--	------------------------	---	-------------

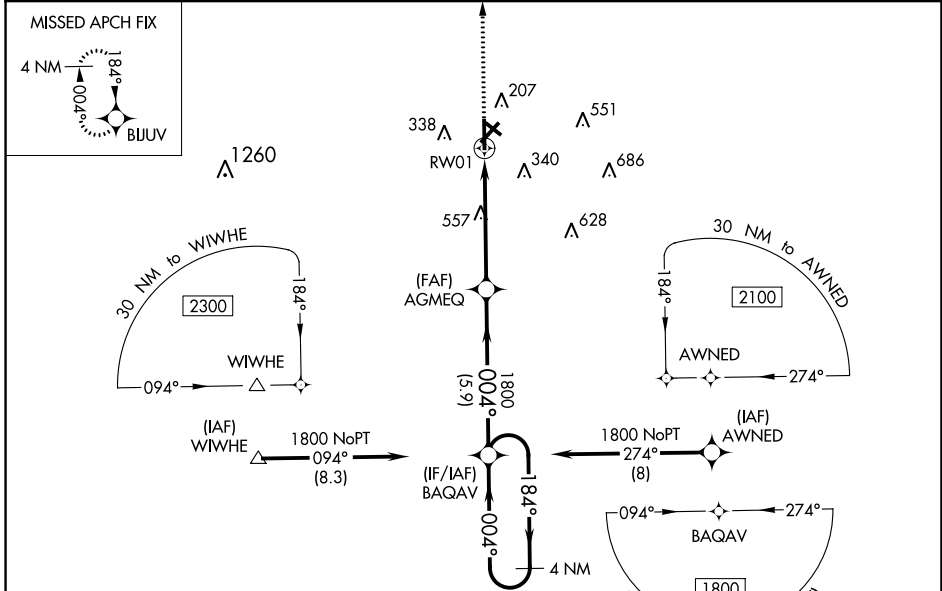
RNAV (GPS) RWY 1

WAYCROSS-WARE COUNTY (A.Y.S)

⚠ DME/DME RNP-0.3 NA. When local altimeter setting not received, use Alma altimeter setting and increase LPV DA to 473 feet and all visibilities 1/8 mile, LNAV/VNAV DA to 462 feet and all visibilities 1/8 mile; increase all MDA 60 feet and visibility Cats C and D 1/8 mile and Circling Cats C and D visibilities 1/4 mile. For uncompensated Baro-VNAV systems, LNAV/VNAV NA below -15°C (5°F) or above 54°C (130°F). Night Landing Rwy 5, 31 NA. VDP and Baro-VNAV NA when using Alma altimeter setting. Helicopter visibility reduction below 3/4 SM NA.

⚠ MISSED APPROACH: Climb to 1700 direct BIJUV and hold.

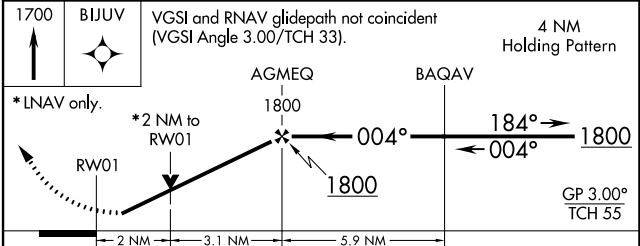
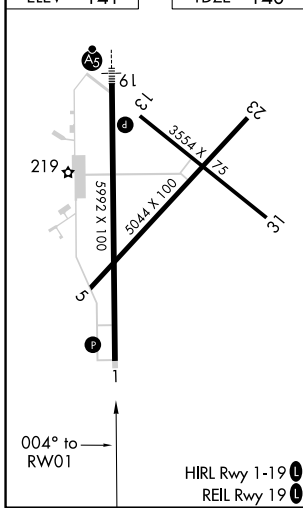
AWOS-3 118.575	JACKSONVILLE CENTER 127.575 269.025	UNICOM 122.8 (CTAF) 0
--------------------------	---	---------------------------------



SE-4, 31 OCT 2024 to 28 NOV 2024

SE-4, 31 OCT 2024 to 28 NOV 2024

ELEV 141	TDZE 140
-----------------	-----------------



CATEGORY	A	B	C	D
LPV DA		423-7/8	283 (300-7/8)	
LNAV/VNAV DA		412-7/8	272 (300-7/8)	
LNAV MDA	820-1	680 (700-1)	820-17/8	680 (700-17/8)
CIRCLING	820-1	679 (700-1)	860-2 719 (800-2)	860-2 1/4 719 (800-2 1/4)