

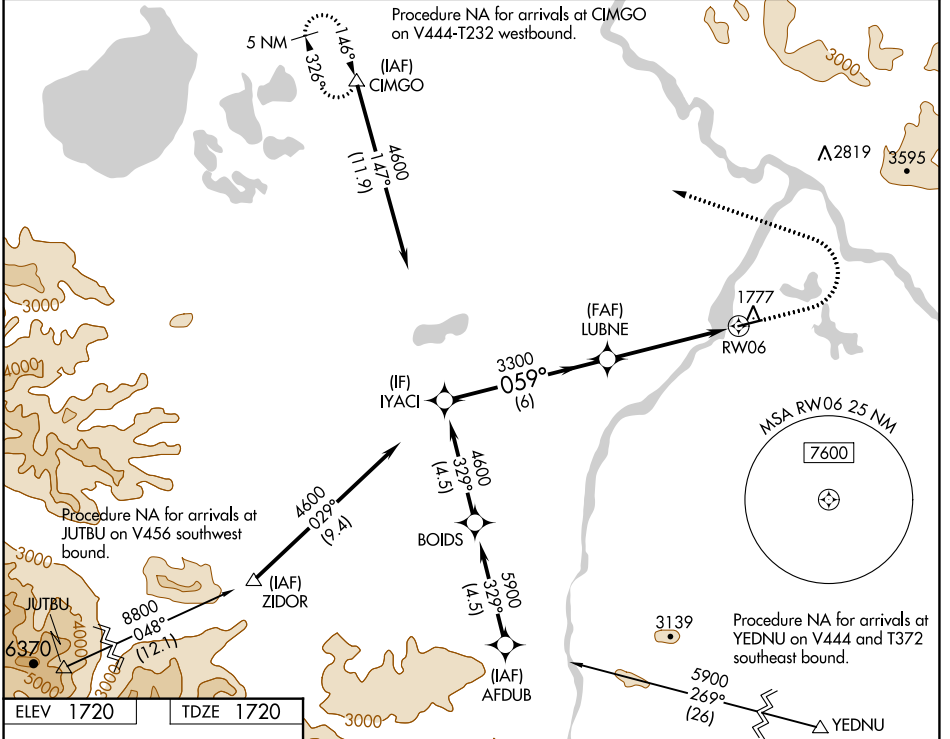
WAAS CH <b>65646</b> <b>W06A</b>	APP CRS <b>059°</b>	Rwy Idg TDZE Apt Elev	<b>5100</b> <b>1720</b> <b>1720</b>
--	------------------------	-----------------------------	---

# RNAV (GPS) RWY 6

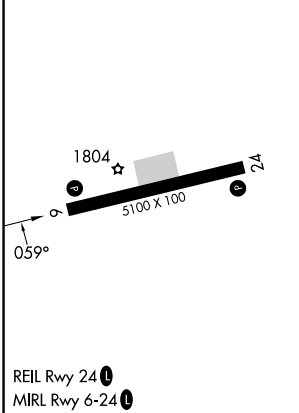
NORTHWAY (ORT)(PAOR)

RNP APCH - GPS.	MISSED APPROACH: Climb to 2200 then climbing left turn to 4800 direct CIMGO and hold.
<p><b>▼</b> Rwy 6 helicopter visibility reduction below <math>\frac{3}{4}</math> SM NA.</p> <p><b>⚠</b> -37°C For uncompensated Baro-VNAV systems, LNAV/VNAV NA below -23°C or above 54°C.</p>	

ASOS <b>135.4</b>	ANCHORAGE CENTER <b>126.55 323.0</b>	NORTHWAY RADIO <b>123.6 (CTAF) 0</b>
----------------------	---	---



ELEV 1720	TDZE 1720
-----------	-----------



YACI	LUBNE	2200	4800	CIMGO
4600	3300	↑	↶	△
GP 3.00°				
TCH 39				
	6 NM	3.5 NM	1.3 NM	
CATEGORY	A	B	C	D
LPV DA	1974- $\frac{3}{4}$ 254 (300- $\frac{3}{4}$ )			
LNAV/VNAV DA	2030- $\frac{7}{8}$ 310 (400- $\frac{7}{8}$ )			
LNAV MDA	2180-1	460 (500-1)	2180-1 $\frac{3}{8}$	460 (500-1 $\frac{3}{8}$ )
CIRCLING	2180-1	460 (500-1)	2240-1 $\frac{1}{2}$ 520 (600-1 $\frac{1}{2}$ )	2340-2 620 (700-2)

AK, 31 OCT 2024 to 26 DEC 2024

AK, 31 OCT 2024 to 26 DEC 2024