

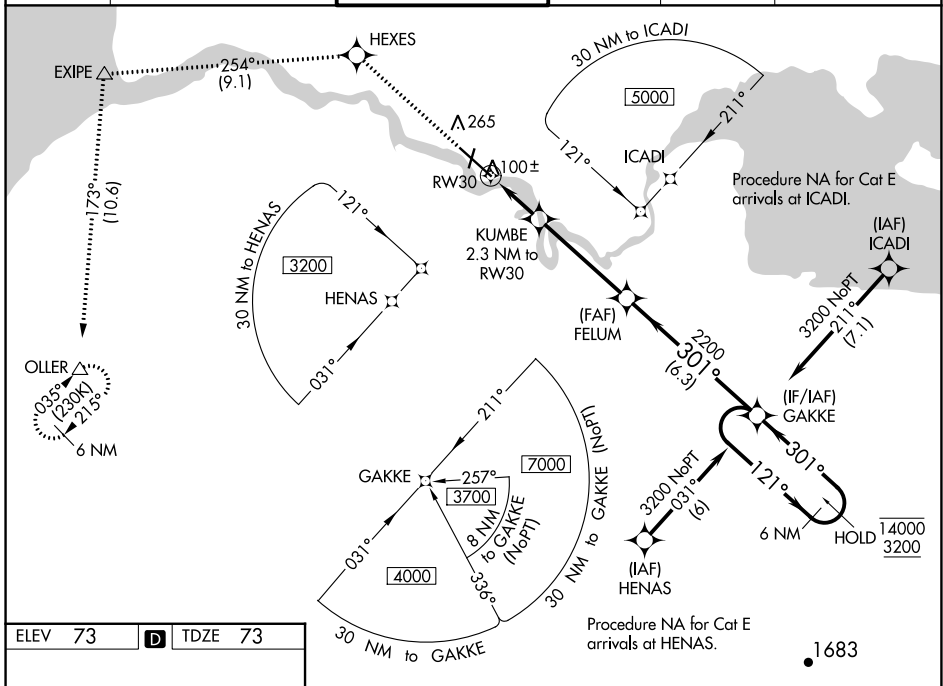
WAAS CH 77908 W30A	APP CRS 301°	Rwy Idg TDZE 73 Apt Elev 73	8501
--	------------------------	---	-------------

RNAV (GPS) RWY 30

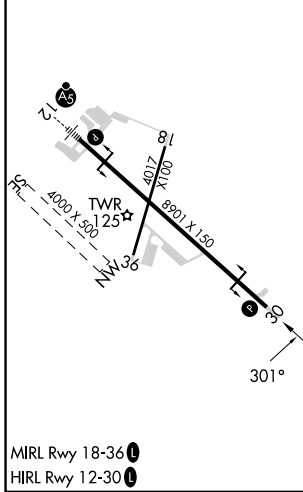
KING SALMON (AKN)(PAKN)

RNP APCH-GPS.		MISSED APPROACH: Climb to 3000 direct HEXES and on track 254° to EXIPE and on track 173° to OLLER and hold.	
<p>⚠ For uncompensated Baro-VNAV systems, LNAV/VNAV NA below -19°C or above 54°C. When control tower closed, increase LPV and LNAV/VNAV visibility all Cats to 1 SM.</p>			

ATIS 128.8	ANCHORAGE CENTER 124.8 354.0	KING SALMON TOWER* 118.3 279.5	GND CON 121.9	UNICOM 122.95	CTAF 121.9 352.05
----------------------	--	--	-------------------------	-------------------------	-----------------------------



ELEV 73	D	TDZE 73
---------	----------	---------



3000	↑	HEXES	tr 254°	EXIPE	tr 173°	OLLER	
*RNAV only		KUMBE 2.3 NM to RWY 30		FELUM		GAKKE 6 NM Holding Pattern	
RWY 30		*0.8 NM to RWY 30		2200		14000 3200	
0.8 NM		1.5 NM		4.2 NM		6.3 NM	
CATEGORY	A	B	C	D	E		
LPV DA	273-¾ 200 (200-¾)						
LNAV/VNAV DA	323-¾ 250 (300-¾)			376-⅞ 303 (400-⅞)			
LNAV MDA	360-1 287 (300-1)						
C CIRCLING	580-1 507 (600-1)		580-1½ 507 (600-1½)		900-2¾ 827 (900-2¾)		960-3 887 (900-3)

AK, 31 OCT 2024 to 26 DEC 2024

AK, 31 OCT 2024 to 26 DEC 2024