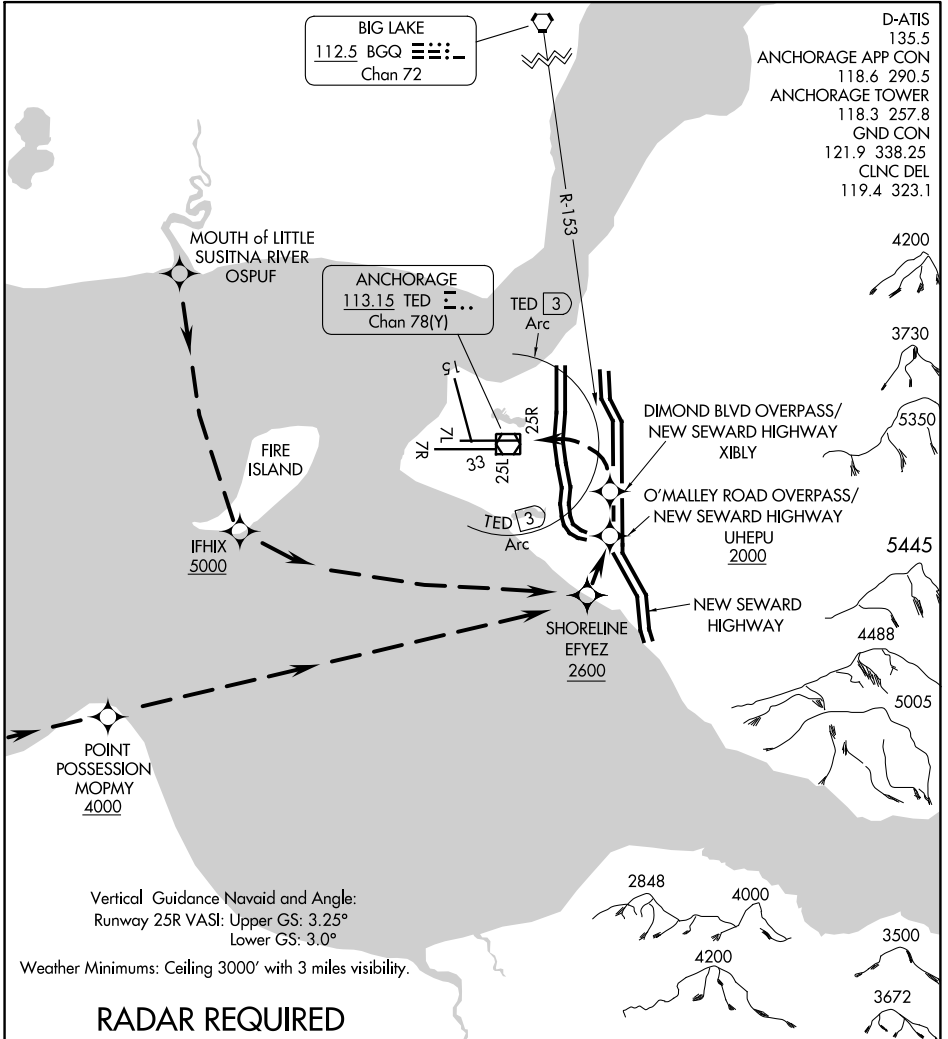


HIGHWAY VISUAL RWY 25R

TED STEVENS ANCHORAGE INTL (ANC) (PANC)
AL-1500 (FAA) ANCHORAGE, ALASKA



BIG LAKE
112.5 BQG Chan 72

D-ATIS 135.5
ANCHORAGE APP CON 118.6 290.5
ANCHORAGE TOWER 118.3 257.8
GND CON 121.9 338.25
CLNC DEL 119.4 323.1

ANCHORAGE
113.15 TED Chan 78(Y)

TED 3 Arc

DIMOND BLVD OVERPASS/
NEW SEWARD HIGHWAY
XIBLY

O'MALLEY ROAD OVERPASS/
NEW SEWARD HIGHWAY
UHEPU 2000

NEW SEWARD
HIGHWAY

SHORELINE
EFYEZ 2600

IFHIX 5000

POINT
POSSESSION
MOPMY 4000

Vertical Guidance Navaid and Angle:
Runway 25R VASI: Upper GS: 3.25°
Lower GS: 3.0°

Weather Minimums: Ceiling 3000' with 3 miles visibility.

RADAR REQUIRED

NM	1	2	3	4	5	6	7	8	9	10	11	12	13	14	15	16	17	18	19	20	21	22	23	24	25	26
----	---	---	---	---	---	---	---	---	---	----	----	----	----	----	----	----	----	----	----	----	----	----	----	----	----	----

HIGHWAY VISUAL RWY 25R
PROCEDURE NOT AUTHORIZED AT NIGHT

HIGHWAY VISUAL RWY 25R

Amdt 1 09FEB12

61°10'N-150°00'W ANCHORAGE, ALASKA

TED STEVENS ANCHORAGE INTL (ANC) (PANC)

AK, 31 OCT 2024 to 26 DEC 2024

AK, 31 OCT 2024 to 26 DEC 2024