

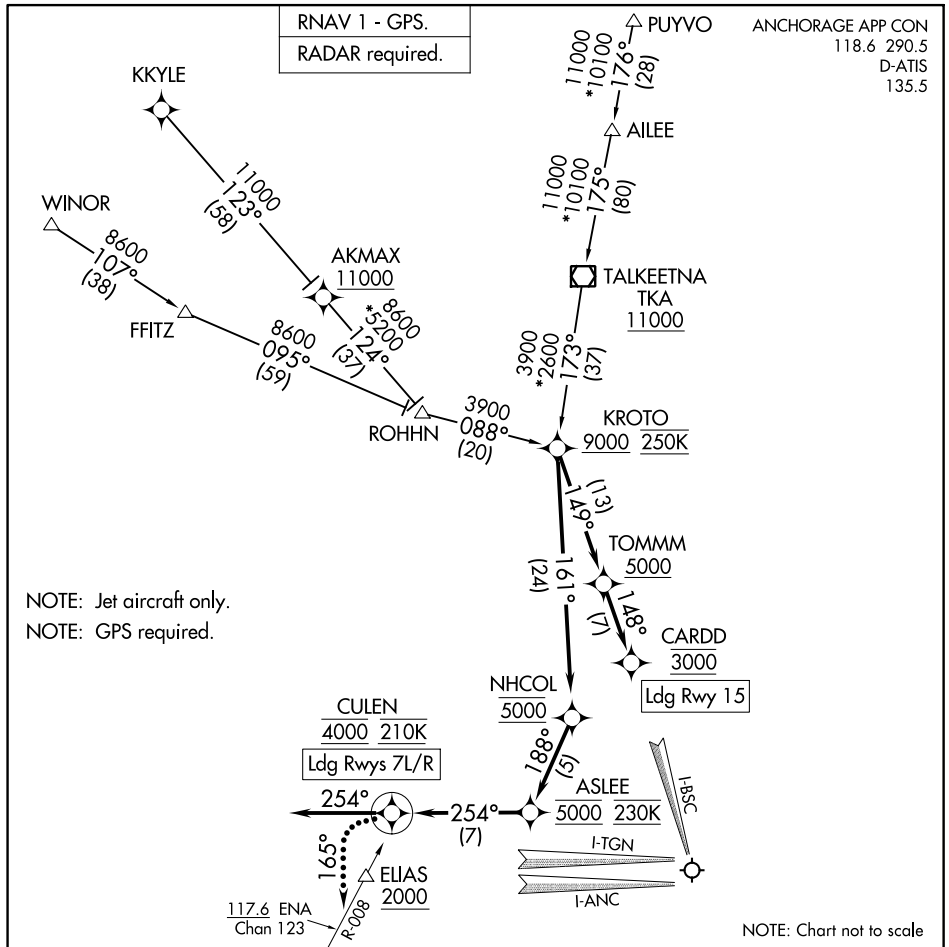
(KROTO.KROTO5) 24305

KROTO FIVE ARRIVAL (RNAV)

TED STEVENS ANCHORAGE INTL (ANC)(PANC)
AL-1500 (FAA) ANCHORAGE, ALASKA

RNAV 1 - GPS.
RADAR required.

ANCHORAGE APP CON
118.6 290.5
D-ATIS
135.5



ARRIVAL ROUTE DESCRIPTION

KYCLE TRANSITION (KKYLE.KROTO5)

PUYVO TRANSITION (PUYVO.KROTO5)

WINOR TRANSITION (WINOR.KROTO5)

LANDING RUNWAYS 7L/R: From KROTO on track 161° to cross NHCOL at 5000, then on track 188° to cross ASLEE at 5000 and at 230K, then on track 254° to cross CULEN at 4000 and at 210K, then on track 254°. Expect RADAR vectors to final approach course.

LANDING RUNWAY 15: From KROTO on track 149° to cross TOMMM at or above 5000, then on track 148° to cross CARDD at 3000. Expect ILS or RNAV RWY 15 approach.

LOST COMMUNICATIONS

RUNWAYS 7L/R: After CULEN, turn left heading 165°, intercept the ENA VOR/DME R-008 to cross ELIAS at or above 2000 and proceed on the ILS or LOC RWY 7R approach.

RUNWAY 15: After CARDD proceed on the ILS RWY 15 approach.

KROTO FIVE ARRIVAL (RNAV)

(KROTO.KROTO5) 31OCT24

ANCHORAGE, ALASKA
TED STEVENS ANCHORAGE INTL (ANC)(PANC)

AK, 31 OCT 2024 to 26 DEC 2024

AK, 31 OCT 2024 to 26 DEC 2024