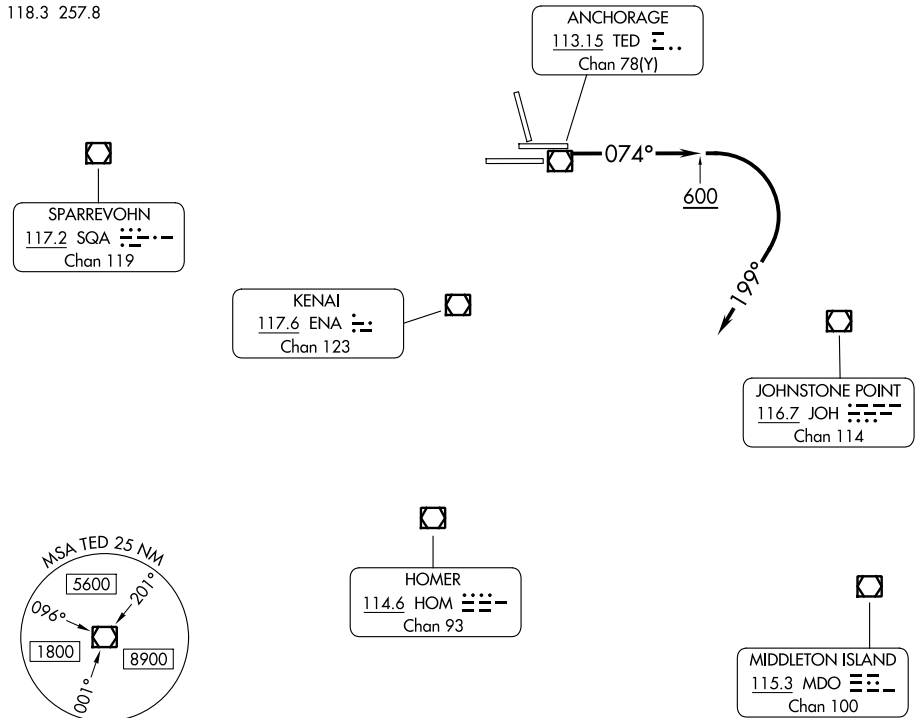


POTTR TWO DEPARTURE

ANCHORAGE DEP CON
126.4 270.25
D-ATIS
135.5
CLNC DEL
119.4 323.1
GND CON
121.9 338.25
ANCHORAGE TOWER
118.3 257.8

RADAR required.

**TOP ALTITUDE:
4000**



AK, 31 OCT 2024 to 26 DEC 2024

AK, 31 OCT 2024 to 26 DEC 2024

TAKEOFF MINIMUMS

Rwys 15, 25L/R, 33: NA - ATC.

Rwy 7L: 300-1½ or standard with minimum climb of 255 feet per NM to 400.

Rwy 7R: 300-1 or standard with minimum climb of 285 feet per NM to 400.

NOTE: Do not exceed 200K.

NOTE: Chart not to scale.



DEPARTURE ROUTE DESCRIPTION

TAKEOFF RUNWAYS 7L/R: Climb on heading 074° to 600, then climbing right turn on heading 199°. Thence. . . .

. . . . expect RADAR vectors to assigned route or depicted fix. Maintain 4000. Expect further clearance to filed altitude within 10 minutes after departure.

POTTR TWO DEPARTURE