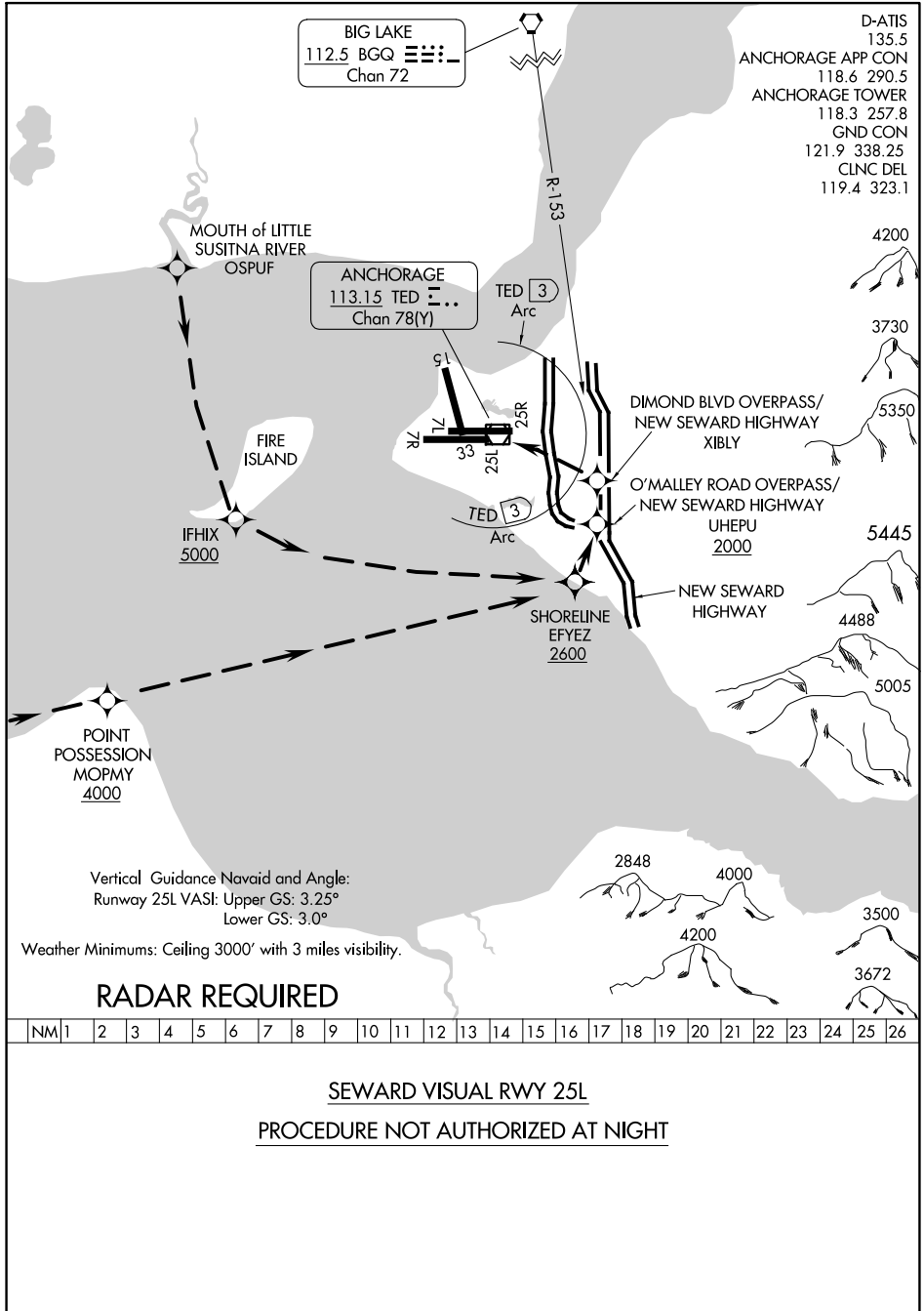


SEWARD VISUAL RWY 25L

TED STEVENS ANCHORAGE INTL (ANC) (PANC)
AL-1500 (FAA) ANCHORAGE, ALASKA



AK, 31 OCT 2024 to 26 DEC 2024

AK, 31 OCT 2024 to 26 DEC 2024

SEWARD VISUAL RWY 25L

61°10'N-150°00'W ANCHORAGE, ALASKA
TED STEVENS ANCHORAGE INTL (ANC) (PANC)

Amdt 1 09FEB12

SEWARD VISUAL RWY 25L
PROCEDURE NOT AUTHORIZED AT NIGHT