

APP CRS	Rwy Idg	5190
191°	TDZE	647
	Apt Elev	647

RNAV (GPS) RWY 20

BETTLES(BTT)(PABT)

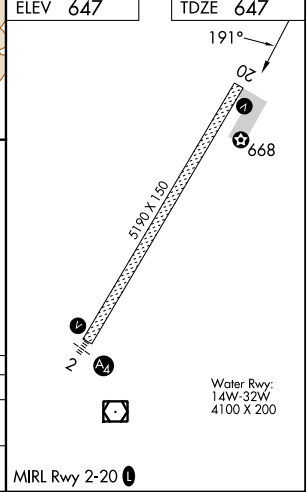
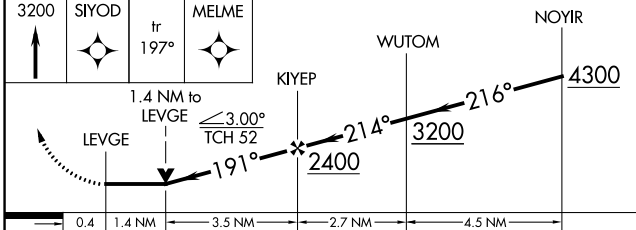
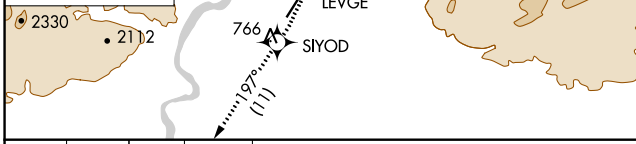
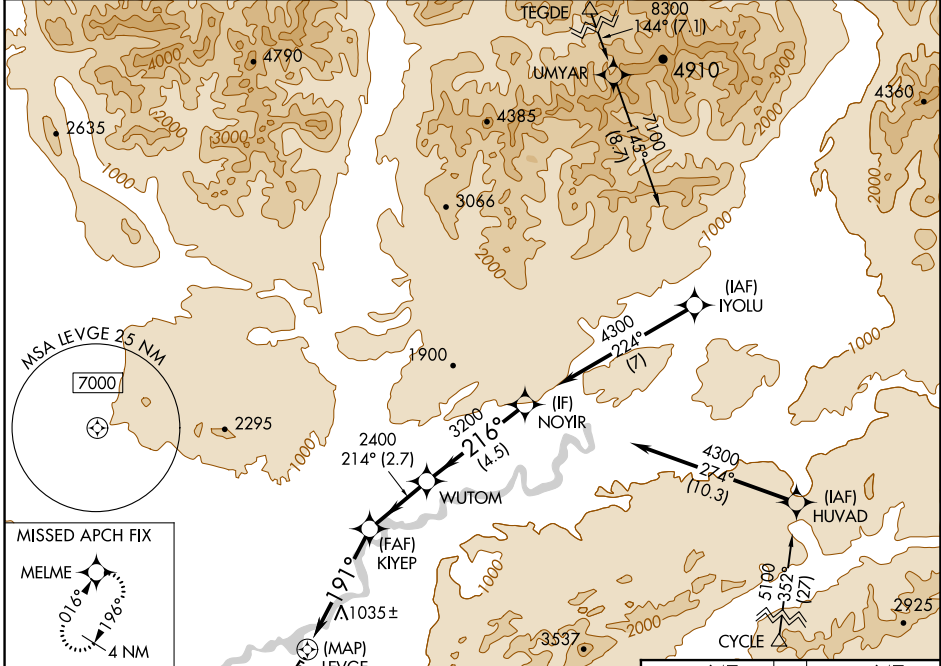
RNP APCH.

⚠ Circling NA east of Rwy 2-20. Rwy 20 helicopter visibility reduction below 3/4 SM NA.

❄ -44°C

MISSED APPROACH: Climb to 3200 direct SIYOD and on track 197° to MELME and hold.

ASOS	ANCHORAGE CENTER	FAIRBANKS RADIO	CTAF
135.45	124.6 352.0	122.2	122.9 0



3200	SIYOD	tr 197°	MELME		NOYIR
				WUTOM	
			LEVGE	KIYEP	
CATEGORY	A	B	C	D	
LNAV MDA	1300-1 653 (700-1)	1300-1 653 (700-1)	1300-1 653 (700-1)	1300-1 653 (700-1)	
CIRCLING	1300-1 653 (700-1)	1320-2 673 (700-2)	1320-2 673 (700-2)	1320-2 673 (700-2)	

AK, 31 OCT 2024 to 26 DEC 2024

AK, 31 OCT 2024 to 26 DEC 2024