

TACAN RWY 32

TACAN NGS Chan 63	APCH CRS 322°	Rwy ldg TDZE Arprt Elev 6002 172 177
-----------------------------	-------------------------	--

[USN]

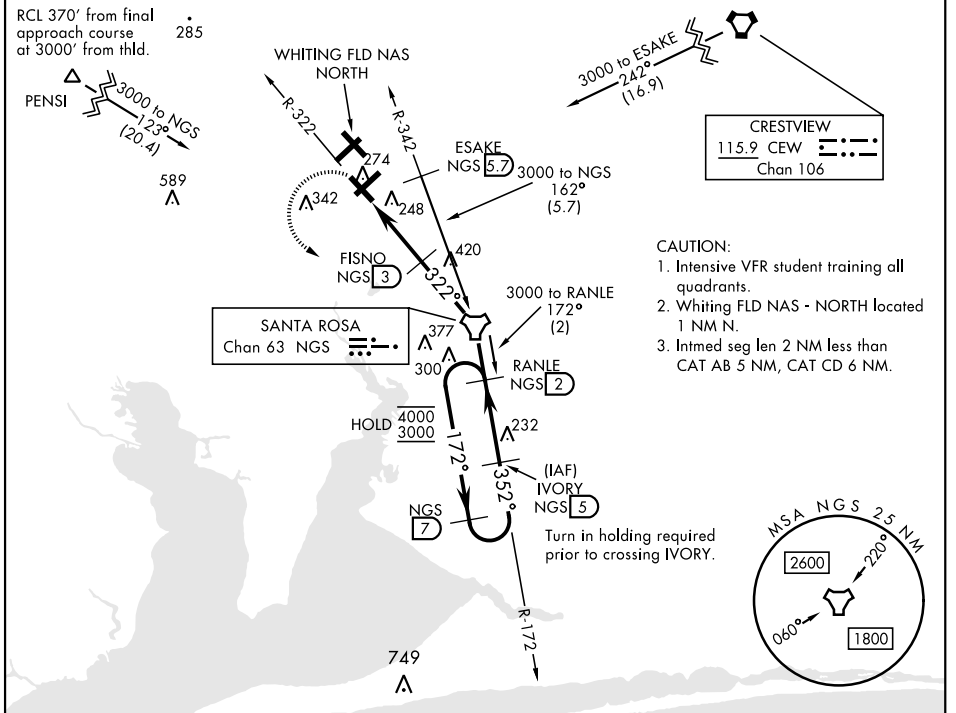
WHITING FLD NAS - SOUTH (KNDZ)

▼ * When ALS inop, increase vis to 1 mile.
 ** Circling not authorized N of Rwy 14 and 23.



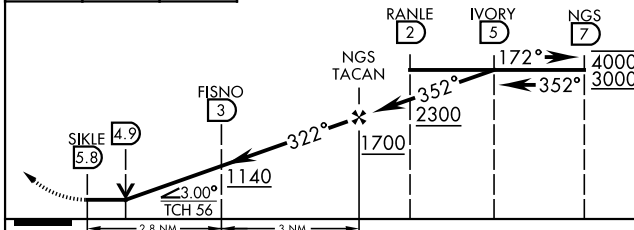
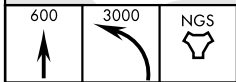
MISSED APPROACH: Climb to 600, then climbing left turn to 3000 direct NGS TACAN. Then via R-172 to RANLE and hold. Continue climb in hold. Contact Pensacola APP CON.

ATIS ★ 273.575	PENSACOLA APP CON 124.85 235.775	SOUTH WHITING TOWER ★ 123.075 348.675	GND CON 317.65	CLNC DEL 355.6	ASR/ PAR
--------------------------	--	---	--------------------------	--------------------------	-------------

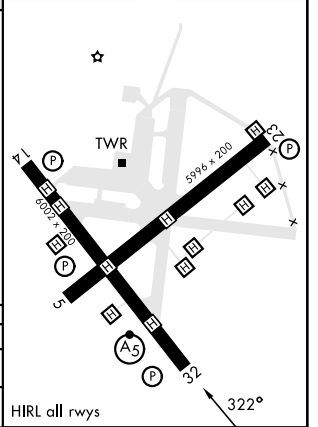


EMERG SAFE ALT 100 NM 3500

ELEV 177	TDZE 172
----------	----------



CATEGORY	A	B	C	D
S-32 *	540-½ 368	400-½	540-⅝ 368	400-⅝
** CIRCLING	580-1 403 (500-1)	640-1 463 (500-1)	660-1½ 483 (500-1½)	740-2 563 (600-2)



MILTON, FLORIDA 30° 42' N-87° 01' W WHITING FLD NAS - SOUTH (KNDZ)

TACAN RWY 32

SE-3, 31 OCT 2024 to 28 NOV 2024

SE-3, 31 OCT 2024 to 28 NOV 2024