

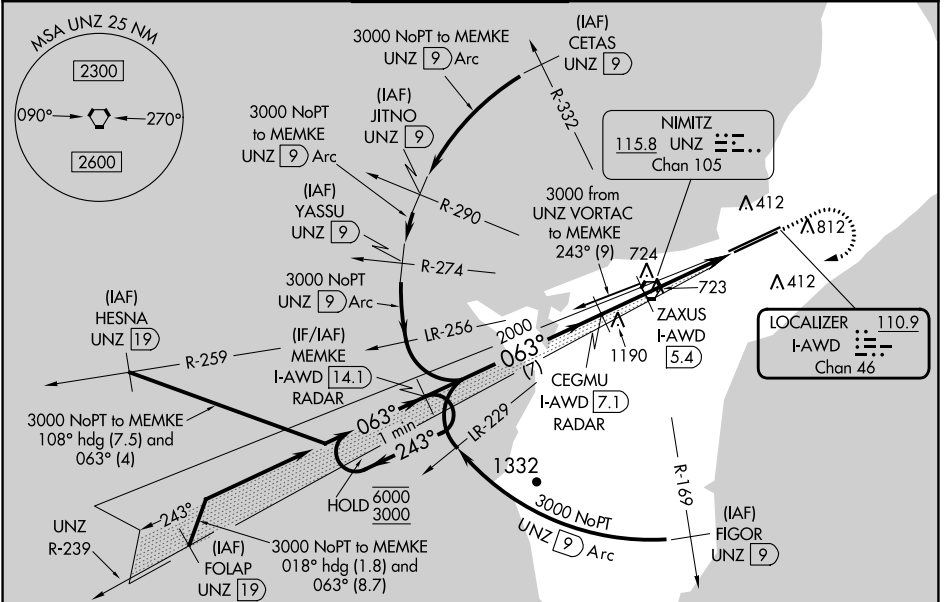
LOC/DME I-AWD 110.9 Chan 46	APP CRS 063°	Rwy Idg 10014 TDZE 258 Apt Elev 305
---	------------------------	--

ILS or LOC RWY 6R

GUAM INTL (GUM)(PGUM)

DME or RADAR required.	MALSR 	MISSED APPROACH: Climb to 2100 then climbing right turn to 3000 direct UNZ VORTAC and on I-AWD to MEMKE/I-AWD 14.1 DME/RADAR and hold.
<p>⚠ Circling NA southeast of Rwy 6R-24L. Rwy 6R helicopter visibility reduction below 3/4 SM NA. Inop table does apply to S-LOC 6R Cat C and D. ZAXUS fix minimums (DME required): For inop ALS, increase S-LOC 6R Cat A and B visibility to 1 SM and Cats C and D to 2 SM.</p>		

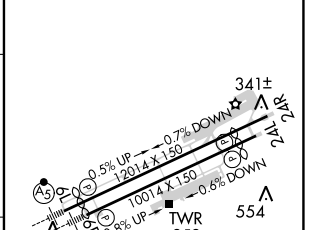
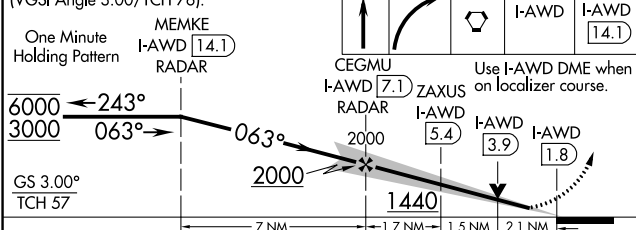
ATIS 119.0	GUAM CERAP 119.8 269.0	AGANA TOWER 118.1 340.2	GND CON 121.9 336.4	CLNC DEL 121.9
----------------------	----------------------------------	-----------------------------------	-------------------------------	--------------------------



PAC, 31 OCT 2024 to 26 DEC 2024

PAC, 31 OCT 2024 to 26 DEC 2024

VGSI and ILS glidepath not coincident (VGSI Angle 3.00/TCH 76).	2100	3000	UNZ	MEMKE	ELEV 305	TDZE 258
---	------	------	-----	-------	----------	----------



CATEGORY	A	B	C	D
S-ILS 6R	603-3/4 345 (300-3/4)			
S-LOC 6R	1440-3/4 1182 (1200-3/4)	1440-1 1182 (1200-1)	1440-3	1182 (1200-3)
C CIRCLING	1440-1 1/4 1135 (1200-1 1/4)	1440-1 1/2 1135 (1200-1 1/2)	1440-3 1135 (1200-3)	NA
ZAXUS FIX MINIMUMS (DME REQUIRED)				
S-LOC 6R	980-3/4 722 (700-3/4)	980-1 5/8 722 (700-1 5/8)		
C CIRCLING	980-1 675 (700-1)	980-2 675 (700-2)	NA	

HIRL all Rwys					
FAF to MAP 5.3 NM					
Knots	60	90	120	150	180
Min:Sec	5:18	3:32	2:39	2:07	1:46