

APP CRS	Rwy Idg	10014
063°	TDZE	258
	Apt Elev	305


RNAV (RNP) Z RWY 6R

GUAM INTL (GUM)(PGUM)

RNP AR APCH - GPS.

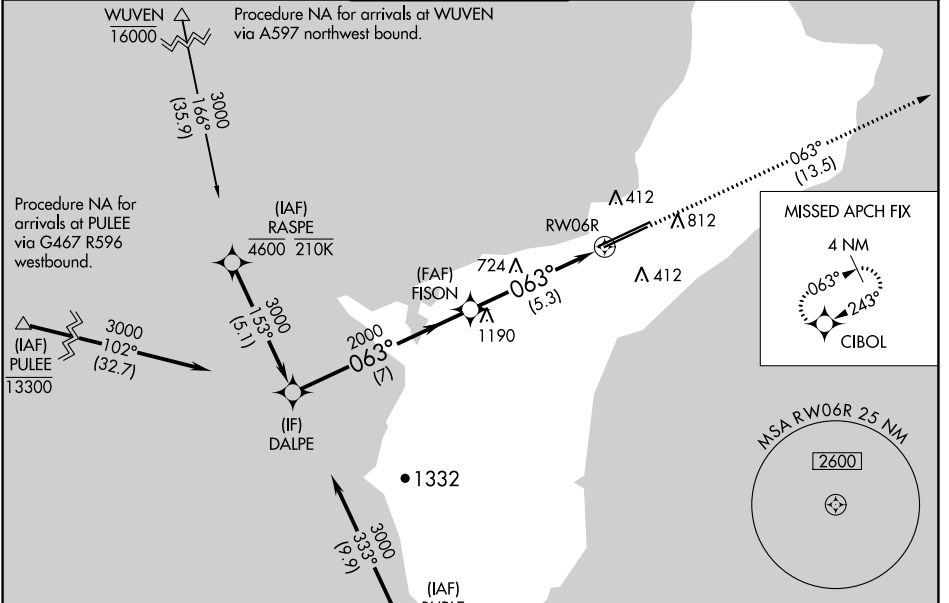
▼ For uncompensated Baro-VNAV systems, procedure NA below 19°C or above 48°C. For inop ALS, increase RNP 0.30 all Cats visibility to 1½ SM. Inop table does not apply to RNP 0.30.*
 *Missed approach requires a minimum climb of 285 feet per NM to 1400.

MALSR



MISSED APPROACH: Climb to 3000 via track 063° to CIBOL and hold.

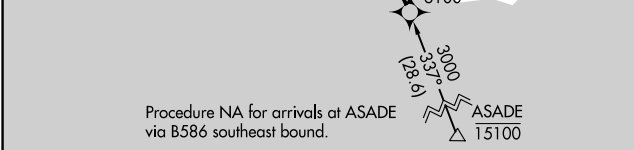
ATIS	GUAM CERAP	AGANA TOWER	GND CON	CLNC DEL
119.0	119.8 269.0	118.1 340.2	121.9 336.4	121.9



PAC, 31 OCT 2024 to 26 DEC 2024

PAC, 31 OCT 2024 to 26 DEC 2024

ELEV 305	D TDZE 258
----------	-------------------



Procedure Turn NA

GP 3.00° TCH 55

7 NM

5.3 NM

3000

2000

270±

341±

0.5% UP

0.7% DOWN

12014 X 150

0.8% UP

0.6% DOWN

10014 X 150

TWR 352

554

CATEGORY	A	B	C	D
RNP 0.30* DA		511-¾	253 (300-¾)	
RNP 0.30 DA		656-¾	398 (400-¾)	

AUTHORIZATION REQUIRED

HIRL all Rwys