

APP CRS	Rwy Idg	10014
063°	TDZE	258
	Apt Elev	305

RNAV (GPS) Y RWY 6R

GUAM INTL (GUM)(PGUM)

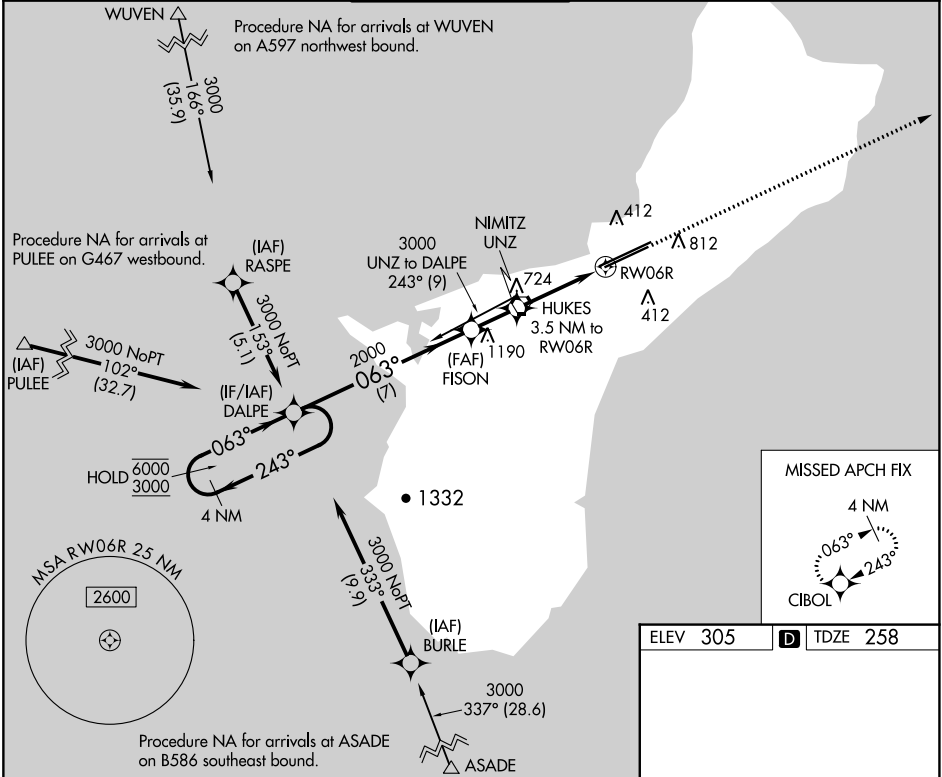
RNP APCH - GPS.

▼ Rwy 6R helicopter visibility reduction below 3/4 SM NA. For inop ALS, increase Cat A and B visibility to 1 SM, and Cat C and D to 2 SM. Circling NA southeast of Rwy 6R-24L.

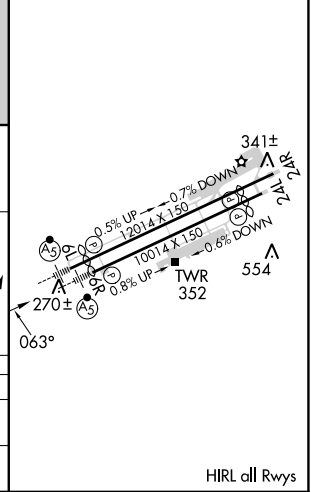
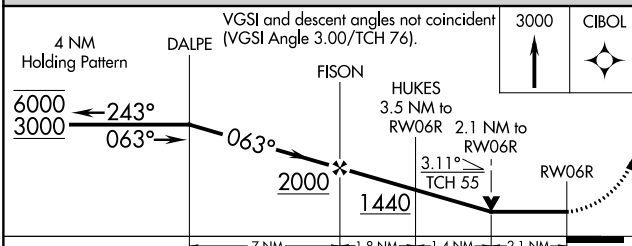
MALSR 

MISSED APPROACH: Climb to 3000 direct CIBOL and hold.

ATIS	GUAM CERAP	AGANA TOWER	GND CON	CLNC DEL
119.0	119.8 269.0	118.1 340.2	121.9 336.4	121.9



ELEV 305	D TDZE 258
----------	-------------------



CATEGORY	A	B	C	D
LNVA MDA	980-3/4	722 (700-3/4)	980-1 5/8	722 (700-1 5/8)
C CIRCLING	980-1	675 (700-1)	980-2 675 (700-2)	NA

HIRL all Rwys

PAC, 31 OCT 2024 to 26 DEC 2024

PAC, 31 OCT 2024 to 26 DEC 2024