

APP CRS	Rwy Idg	4977
090°	TDZE	35
	Apt Elev	40

RNAV (GPS) RWY 9

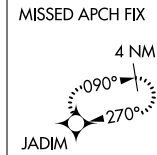
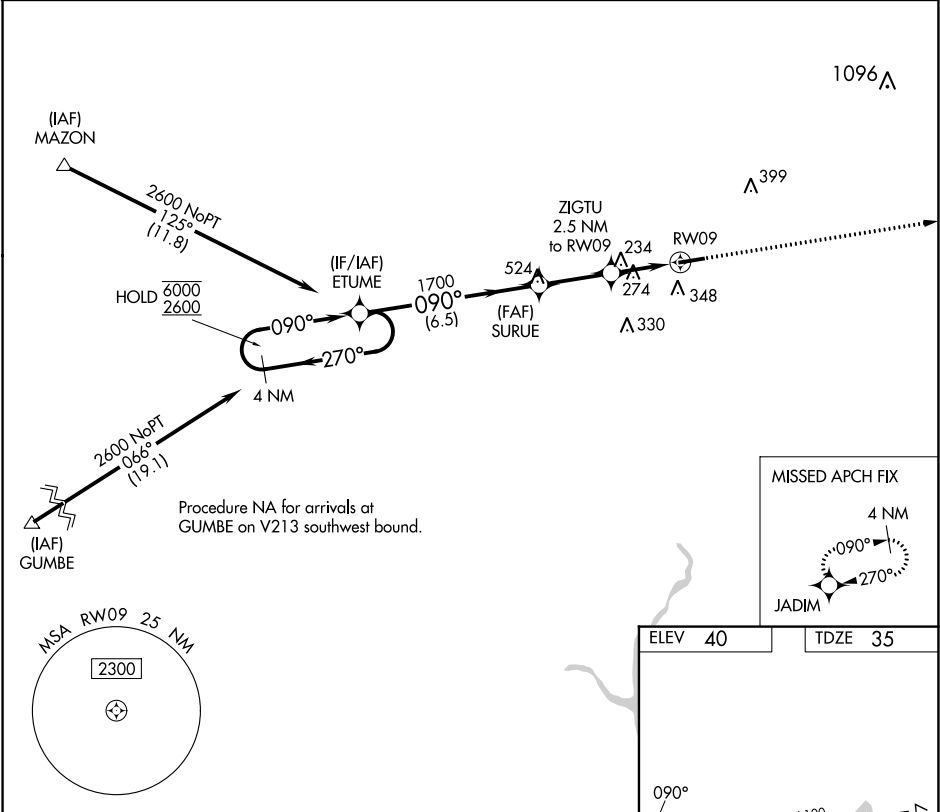
FRANKLIN RGNL (F'KN)

RNP APCH - GPS.

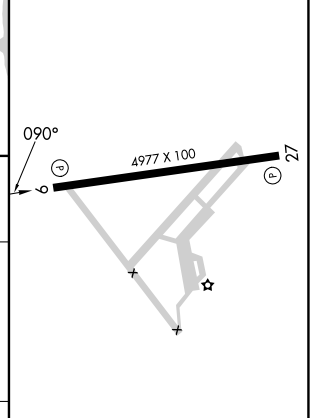
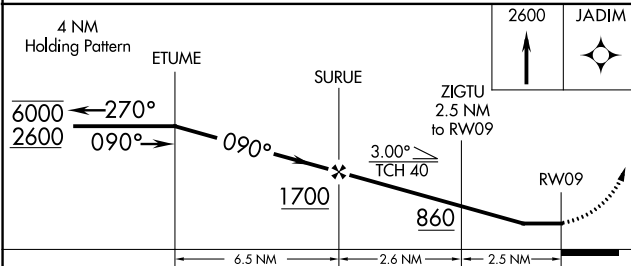
MISSED APPROACH:
Climb to 2600 direct
JADIM and hold.

Procedure NA at night. Rwy 9 helicopter visibility reduction below 1 SM NA.

AWOS-3PT 124.675	NORFOLK APP CON 127.9 269.425	UNICOM 122.8 (CTAF) 1
----------------------------	---	---------------------------------



ELEV 40	TDZE 35
---------	---------



CATEGORY	A	B	C	D
LNAV MDA	580-1	545 (600-1)	580-1 ⁵ / ₈	545 (600-1 ⁵ / ₈)

MIRL Rwy 9-27 1

NE-3, 31 OCT 2024 to 28 NOV 2024

NE-3, 31 OCT 2024 to 28 NOV 2024