

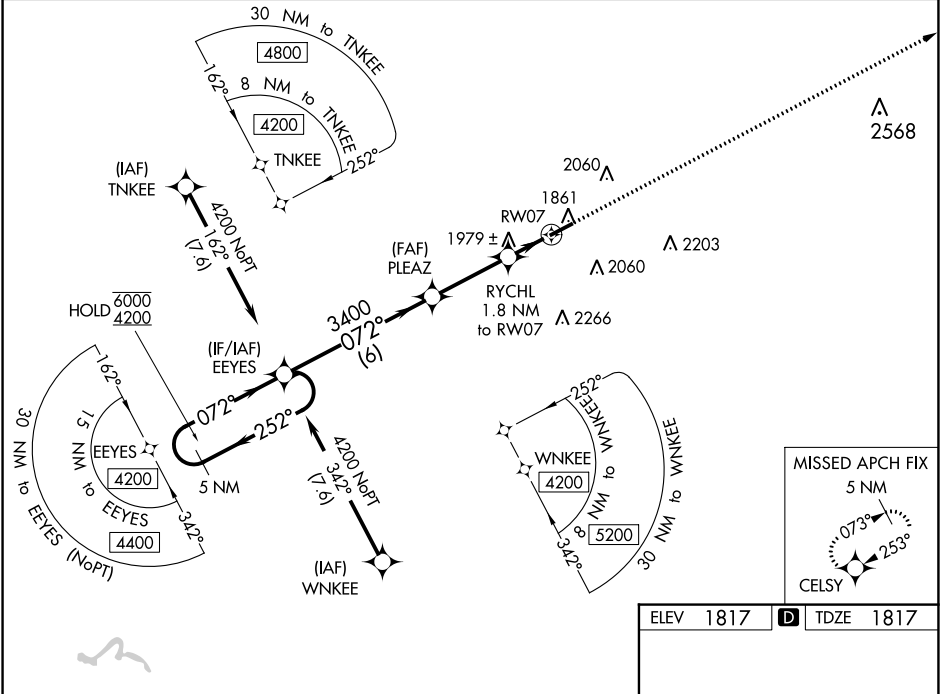
WAAS CH 82116 W07A	APP CRS 072°	Rwy Idg TDZE Apt Elev	5503 1817 1817
--	------------------------	-----------------------------	---

RNAV (GPS) RWY 7

DUBOIS RGNL (DUJ)

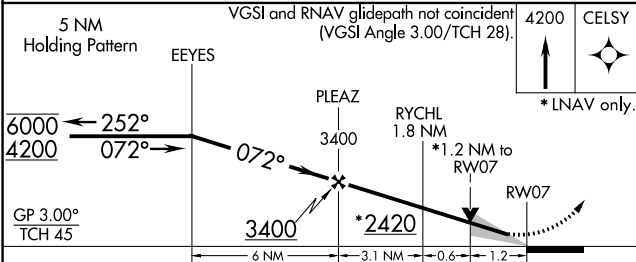
RNP APCH.	MISSED APPROACH: Climb to 4200 direct CELSY and hold.
<p>⚠ Circling NA for Cat D south of Rwy 7-25. For uncompensated Baro-VNAV systems, LNAV/VNAV NA below -21°C or above 54°C.</p>	

ASOS 119.025	CLEVELAND CENTER 126.725 291.65	UNICOM 123.0 (CTAF) 0
------------------------	---	---------------------------------

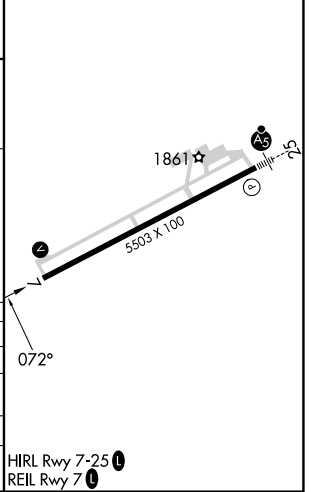


NE-4, 31 OCT 2024 to 28 NOV 2024

NE-4, 31 OCT 2024 to 28 NOV 2024



ELEV 1817	D TDZE 1817
-----------	--------------------



CATEGORY	A	B	C	D
LPV DA		2017-3/4	200 (200-3/4)	
LNAV/VNAV DA		2160-1	343 (400-1)	
LNAV MDA	2240-1	423 (500-1)	2240-1 1/4	423 (500-1 1/4)
C CIRCLING	2320-1 503 (600-1)	2360-1 543 (600-1)	2380-1 1/2 563 (600-1 1/2)	2400-2 583 (600-2)

HIRL Rwy 7-25 **0**
REIL Rwy 7 **0**