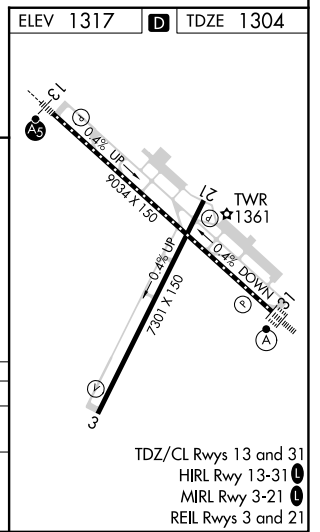
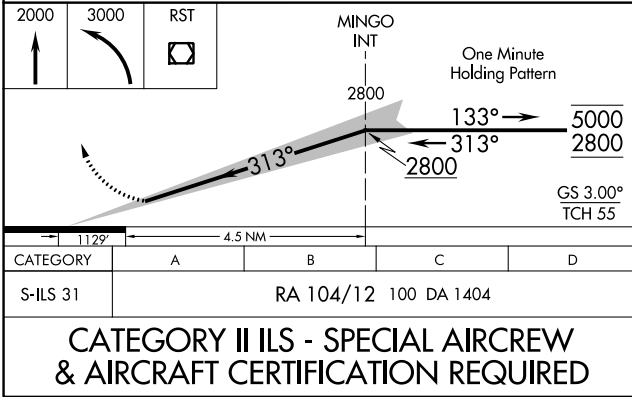
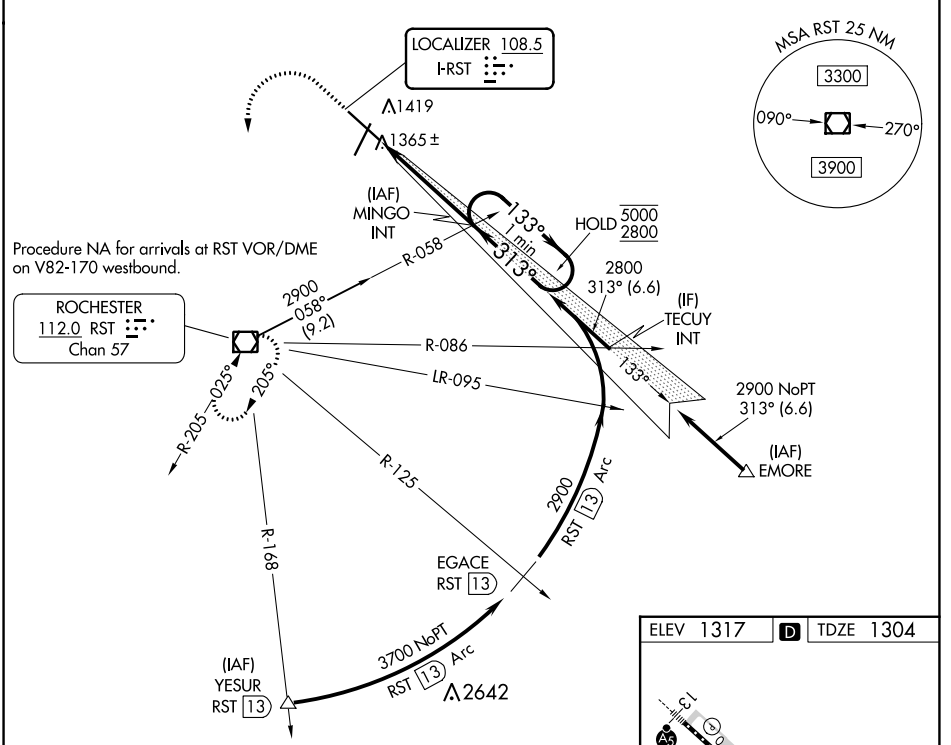


LOC I-RST 108.5	APP CRS 313°	Rwy Idg 9033 TDZE 1304 Apt Elev 1317
---------------------------	------------------------	---

ILS Z RWY 31 (CAT II)

ROCHESTER INTL (RST)

DME required for procedure entry at YESUR.		ALSf-2 	MISSED APPROACH: Climb to 2000 then climbing left turn to 3000 direct RST VOR/DME and hold.		
ASR 	Procedure NA when tower closed.				
ATIS 120.5	ROCHESTER APP CON* 119.8 251.125	ROCHESTER TOWER* 118.3 (CTAF) 257.8	GND CON 121.9	UNICOM 122.95	



NC-1, 31 OCT 2024 to 28 NOV 2024

NC-1, 31 OCT 2024 to 28 NOV 2024