

APP CRS	Rwy ldg	<b>3975</b>
<b>289°</b>	TDZE	<b>118</b>
	Apt Elev	<b>118</b>

# RNAV (GPS) RWY 29

TRENTON-ROBBINSVILLE (N87)

RNP APCH.

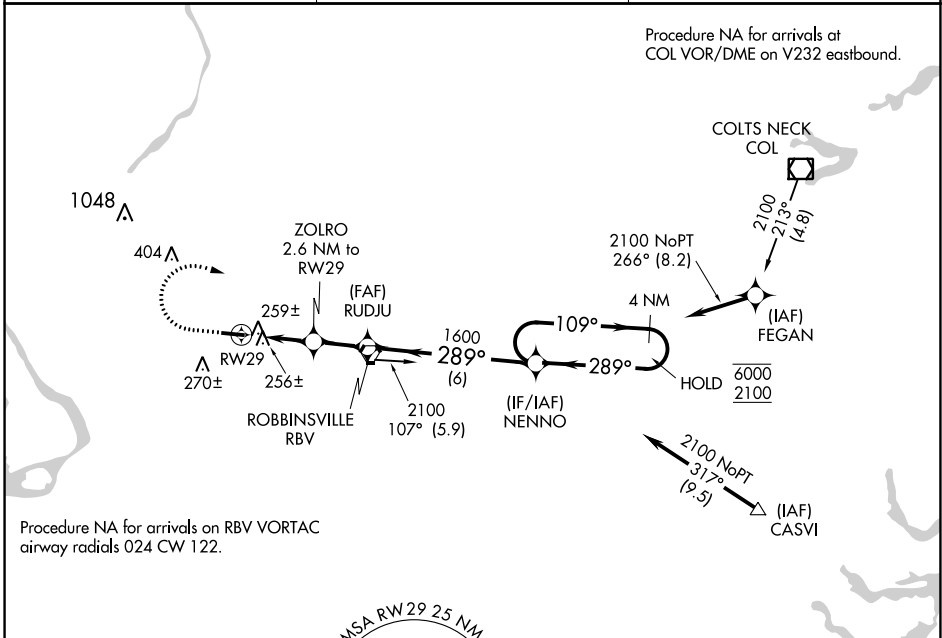
**▼** Procedure NA at night. Rwy 29 helicopter visibility reduction below  
**▲ NA** 1 SM NA. Use Wrightstown altimeter setting.

MISSED APPROACH: Climb to 1000, then climbing right turn to 2100 direct NENNO and hold.

MC GUIRE APP CON  
**126.475 363.8**

UNICOM  
**123.0 (CTAF)**

**123.3 0**

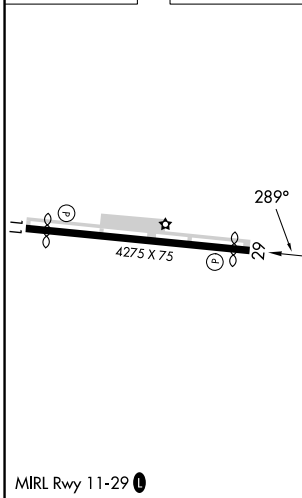


Procedure NA for arrivals on RBV VORTAC  
airway radials 024 CW 122.

MSA RWY 29 25 NM

**2200**

ELEV **118** TDZE **118**



1000	2100	NENNO	Visual Segment - Obstacles.	
			NENNO	4 NM Holding Pattern
RWY 29		ZOLRO 2.6 NM to RWY 29	RUDJU	NENNO
980		1600	109° →	<u>6000</u> <u>2100</u>
2.6 NM		1.9 NM	← 289°	
CATEGORY	A	B	C	D
LNAV MDA	540-1	422 (500-1)	540-1½	422 (500-1½)
CIRCLING	680-1	562 (600-1)	680-1½ 562 (600-1½)	760-2 642 (700-2)

NE-2, 31 OCT 2024 to 28 NOV 2024

NE-2, 31 OCT 2024 to 28 NOV 2024