

VORTAC RBV 113.8 Chan 85	APP CRS 288°	Rwy Idg 3975 TDZE 118 Apt Elev 118
--	------------------------	---

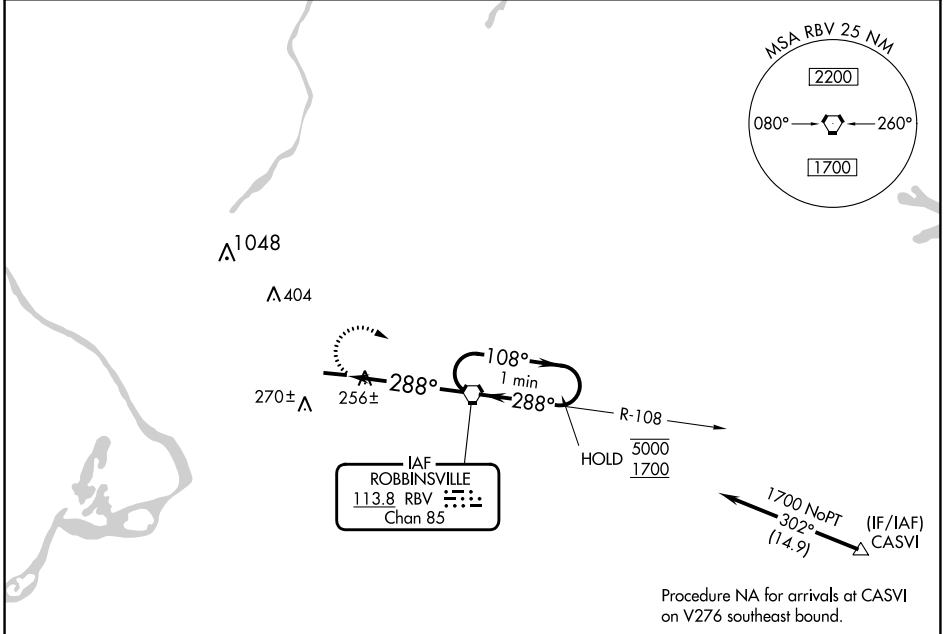
VOR RWY 29

TRENTON-ROBBINSVILLE (N87)

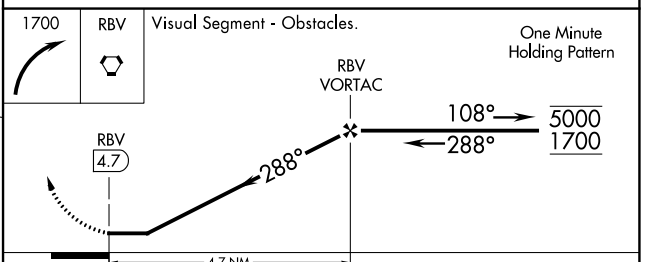
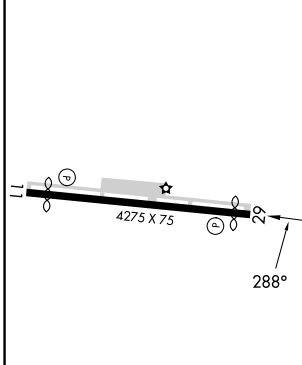
Procedure NA at night.
NA Rwy 29 helicopter visibility reduction below 1 SM NA.
 Use Wrightstown altimeter setting.

MISSED APPROACH: Climbing right turn to 1700 direct RBV VORTAC and hold.

MC GUIRE APP CON 126.475 363.8	UNICOM 123.0 (CTAF)	123.3 0
--	-------------------------------	-----------------------



ELEV 118	TDZE 118
----------	----------



MIRL Rwy 11-29 0	FAF to MAP 4.7 NM							
Knots	60	90	120	150	180			
Min:Sec	4:42	3:08	2:21	1:53	1:34			
CATEGORY	A		B		C		D	
S-29	620-1		502 (600-1)		620-1 3/8		502 (600-1 3/8)	
CIRCLING	680-1		562 (600-1)		680-1 1/2		760-2	
					562 (600-1 1/2)		642 (700-2)	

NE-2, 31 OCT 2024 to 28 NOV 2024

NE-2, 31 OCT 2024 to 28 NOV 2024