

APP CRS	Rwy Idg	3800
151°	TDZE	742
	Apt Elev	750

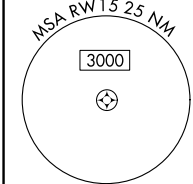
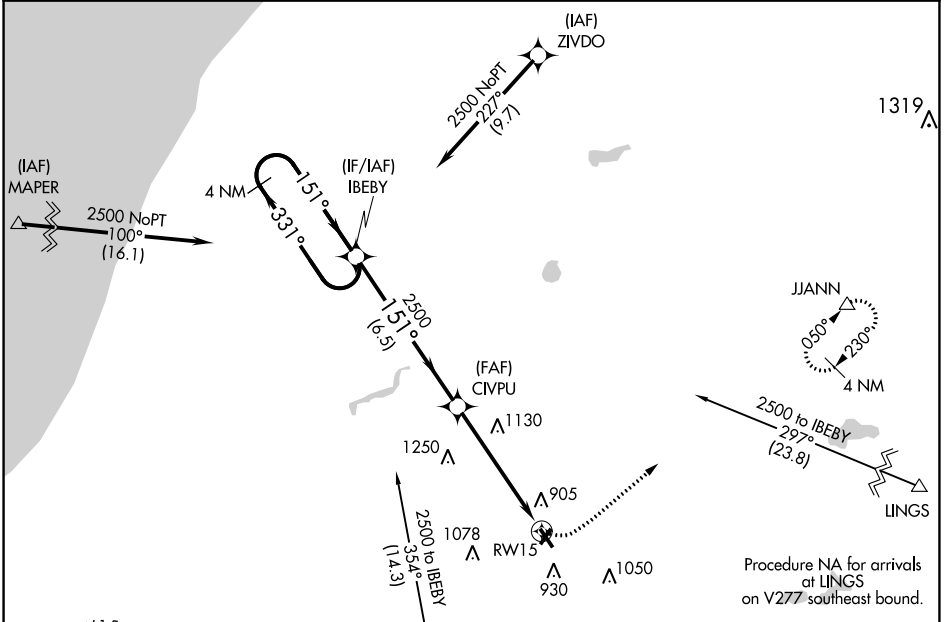
RNAV (GPS) RWY 15

JERRY TYLER MEML (3TR)

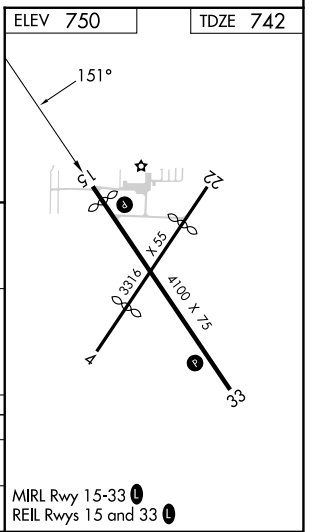
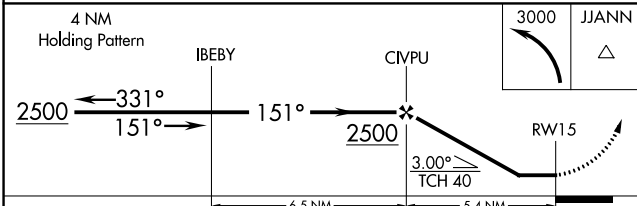
NA Use South Bend altimeter setting; when not received use Elkhart altimeter setting and increase all MDA 20 feet. DME/DME RNP-0.3 NA. Procedure NA at night. Visibility reduction by helicopters NA.

MISSED APPROACH: Climbing left turn to 3000 direct JJANN and hold.

SBN ASOS 120.675	SOUTH BEND APP CON ★ 118.55 257.8	GCO 121.725	UNICOM 122.8 (CTAF) 0
----------------------------	---	-----------------------	---------------------------------



Procedure NA for arrivals on GIJ VORTAC airway radials 271 CW 050.



CATEGORY	A	B	C	D
RNAV MDA	1460-1 718 (800-1)		1460-2 718 (800-2)	NA
CIRCLING	1460-1 710 (800-1)		1460-2 710 (800-2)	NA

MIRL Rwy 15-33
REIL Rwy 15 and 33

EC-1, 31 OCT 2024 to 28 NOV 2024

EC-1, 31 OCT 2024 to 28 NOV 2024