

EC-1, 31 OCT 2024 to 28 NOV 2024

ATIS
125.025
CLNC DEL
118.25
GND CON
121.9
PONTIAC TOWER ★
120.5 (CTAF)
DETROIT DEP CON
132.35 284.0

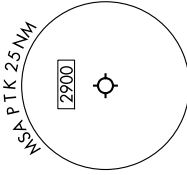
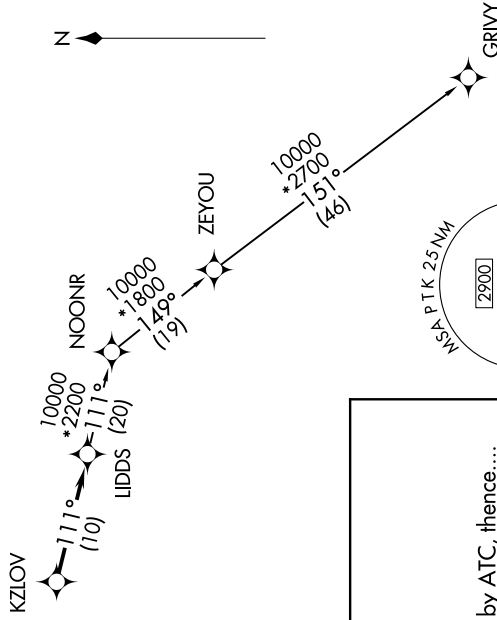
RNAV 1 - DME/DME/IRU or GPS.
RADAR required.



NOTE: Turboprop departures at/above 10000, maintain 280K until advised by ATC.

TAKEOFF MINIMUMS:

Rwys 18, 36: NA-Environmental.
Rwys 9L/R, 27L/R: Standard.



NOTE: Chart not to scale.

**TOP ALTITUDE:
ASSIGNED BY ATC**

DEPARTURE ROUTE DESCRIPTION

TAKEOFF RUNWAYS 9L/R: Climb on heading 095° or as assigned by ATC, thence....
TAKEOFF RUNWAYS 27L/R: Climb on heading 275° or as assigned by ATC, thence....
...for RADAR vectors to KZLOV, then on track 111° to LIDDS, then on (transition).
Maintain ATC assigned altitude, expect filed altitude 10 minutes after departure.
GRIVY TRANSITION (LIDDS3-GRIVY):

EC-1, 31 OCT 2024 to 28 NOV 2024