

VOR/DME MZZ 108.6 Chan 23	APP CRS 143°	Rwy Idg 3456 TDZE 859 Apt Elev 859
---	------------------------	---

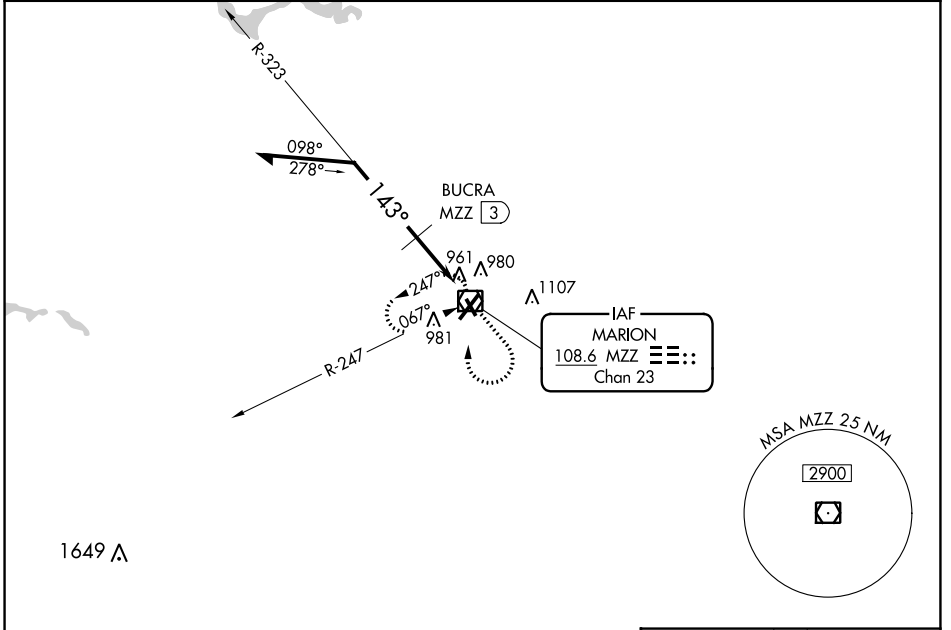
VOR RWY 15

MARION MUNI - MCKINNEY FLD (MZZ)

⚠ NA When local altimeter setting not received, use Fort Wayne Intl altimeter setting and increase all MDA 100 feet, increase S-15 Cat B/C/D visibility $\frac{1}{4}$ SM, increase Circling Cat B/C/D visibility $\frac{1}{2}$ SM; BUCRA fix minimums: increase S-15 Cat C/D visibility $\frac{3}{8}$ SM, increase Circling Cat C/D visibility $\frac{1}{2}$ SM. Rwy 15 helicopter visibility reduction below 1 SM NA. Circling Rwy 15 NA at night. Straight-in Rwy 15 NA at night.

MISSED APPROACH:
Climb to 2400 then right turn direct MZZ VOR/DME and hold.

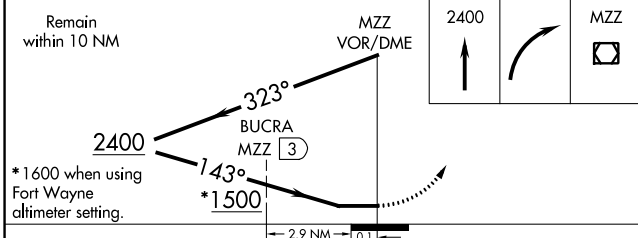
AWOS-3 108.6	GRISSOM APP CON * 121.05 338.275	CLNC DEL 120.0	UNICOM 122.7 (CTAF) 0
------------------------	--	--------------------------	---------------------------------



EC-2, 31 OCT 2024 to 28 NOV 2024

EC-2, 31 OCT 2024 to 28 NOV 2024

ELEV 859	TDZE 859
----------	----------



CATEGORY	A	B	C	D
S-15	1500-1	641 (700-1)	1500-1 $\frac{3}{4}$ 641 (700-1 $\frac{3}{4}$)	1500-2 641 (700-2)
C CIRCLING	1500-1	641 (700-1)	1500-1 $\frac{7}{8}$ 641 (700-1 $\frac{7}{8}$)	1500-2 641 (700-2)
BUCRA FIX MINIMUMS				
S-15	1240-1 381 (400-1)		1240-1 $\frac{1}{4}$ 381 (400-1 $\frac{1}{4}$)	
C CIRCLING	1300-1 441 (500-1)	1320-1 461 (500-1)	1420-1 $\frac{1}{2}$ 561 (600-1 $\frac{1}{2}$)	1500-2 641 (700-2)

