

# TACAN RWY 12

TACAN MIJ Chan <b>79</b>	APCH CRS <b>117°</b>	Rwy ldg <b>10,000'</b> TDZE <b>4344</b> Arpt Elev <b>4351</b>
--------------------------	----------------------	---

[USA]

MICHAEL AAF (KDPG)

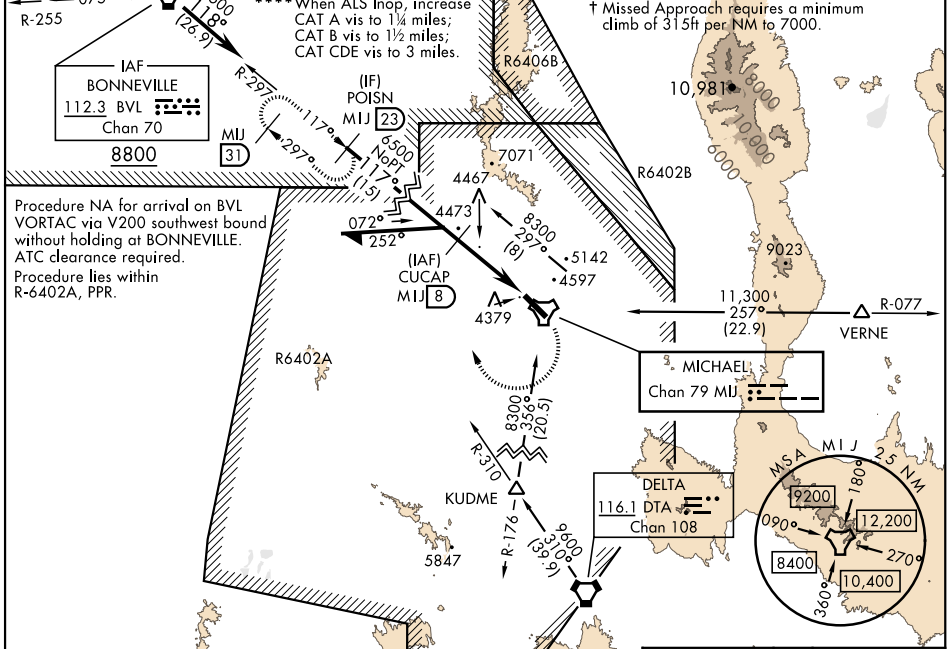
▼ \*When ALS Inop, increase CAT CDE vis to 1¾ miles.  
 \*\*When ALS Inop, increase CAT B vis to 1¼ miles;  
 CAT CDE vis to 2½ miles.  
 \*\*\*When ALS Inop, increase CAT CDE vis to 1¾ miles.

MISSED APPROACH: Climbing right turn to 8800 via MIJ TACAN R-297 to POISN/MIJ 23 DME and hold.

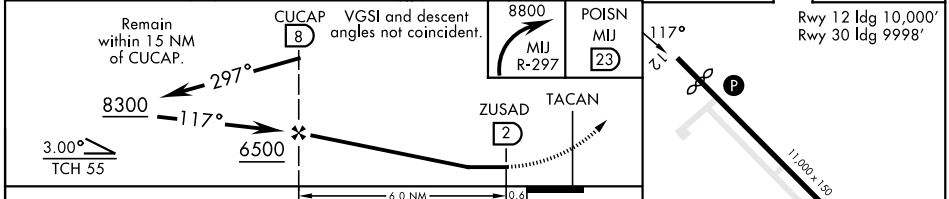
CLOVER CON <b>134.1 363.5</b>	CTAF <b>126.2 270.3</b>
----------------------------------	----------------------------

Knots	60	120	180	240	300	360
V/V(fpm)	315	630	945	1260	1575	1890
Min climb of 315 ft/NM to 7000 - Controlling Obstacle Unk						

↑ Missed Approach requires a minimum climb of 315ft per NM to 7000.



ELEV 4351	TDZE 4344
-----------	-----------



CATEGORY	A	B	C	D	E
S-12*†	4800-1				
S-12**	5160-1	816 (900-1)	456	5160-2	816 (900-2)
☑ CIRCLING	5160-1 809 (900-1)	5160-1¼ 809 (900-1¼)	5160-2½ 809 (900-2½)	5880-3 1529 (1600-3)	6120-3 1769 (1800-3)
KENV - ENV (WENDOVER) ALTIMETER SETTING MINIMUMS					
S-12***†	4960-1	616 (700-1)	4960-1½	616	(700-1½)
S-12****	5320-1 976 (1000-1)	5320-1¼ 976 (1000-1¼)	5320-2	976	(1000-2½)
☑ CIRCLING	5320-1¼ 969 (1000-1¼)	5320-1½ 969 (1000-1½)	5320-3 969 (1000-3)	6040-3 1689 (1700-3)	6280-3 1929 (2000-3)

HIRL Rwy 12-30

# TACAN RWY 12

SW-4, 31 OCT 2024 to 28 NOV 2024

SW-4, 31 OCT 2024 to 28 NOV 2024