

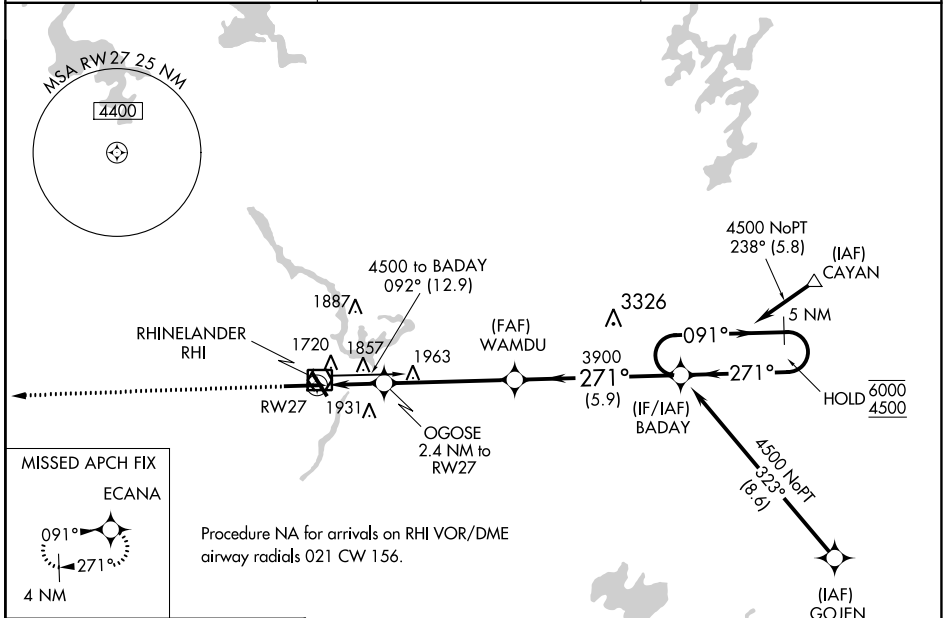
WAAS CH 50217 W27A	APP CRS 271°	Rwy Idg 6799 TDZE 1605 Apt Elev 1623
--	------------------------	---

RNAV (GPS) RWY 27

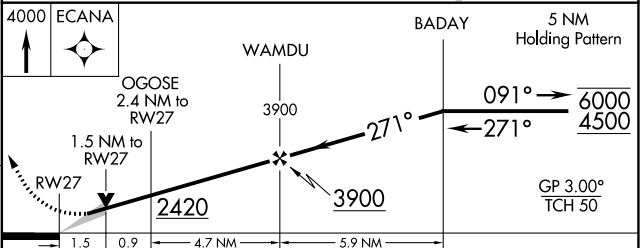
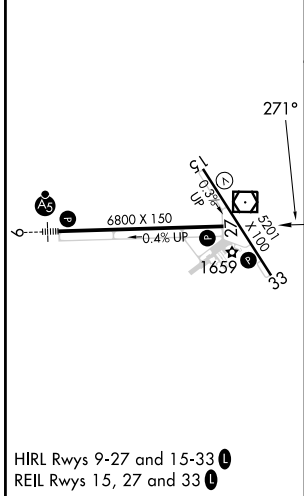
RHINELANDER/ONEIDA COUNTY (RHI)

RNP APCH - GPS.	MISSED APPROACH: Climb to 4000 direct ECANA and hold.
For uncompensated Baro-VNAV systems, LNAV/VNAV NA below -22°C or above 54°C.	

ASOS 126.825	MINNEAPOLIS CENTER 133.65 281.5	UNICOM 123.0 (CTAF) 0
------------------------	---	--



ELEV 1623	D	TDZE 1605
-----------	----------	-----------



CATEGORY	A	B	C	D
LPV DA		1805- ³ / ₄	200 (200- ³ / ₄)	
LNAV/VNAV DA		1920- ⁷ / ₈	315 (300- ⁷ / ₈)	
LNAV MDA	2120-1	515 (500-1)	2120-1 ³ / ₈	515 (500-1 ³ / ₈)
CIRCLING	2120-1 497 (500-1)	2260-1 637 (700-1)	2260-1 ³ / ₄ 637 (700-1 ³ / ₄)	2280-2 657 (700-2)

EC-3, 31 OCT 2024 to 28 NOV 2024

EC-3, 31 OCT 2024 to 28 NOV 2024