

VOR/DME RHI 115.05 Chan 97(Y)	APP CRS 281°	Rwy Idg TDZE 1606 Apt Elev 1624	6799
---	------------------------	---	-------------

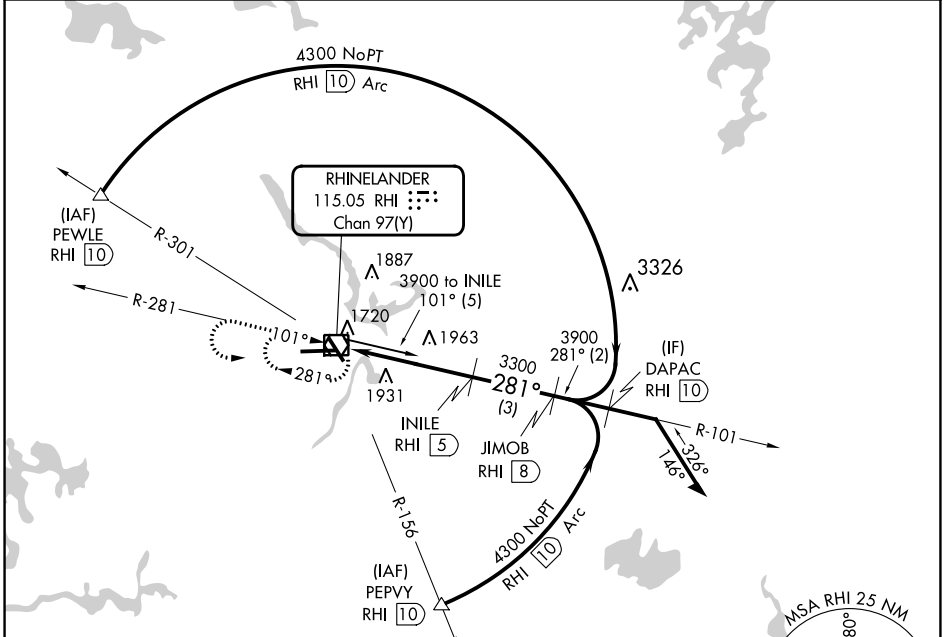
VOR/DME RWY 27

RHINELANDER/ONEIDA COUNTY (RHI)

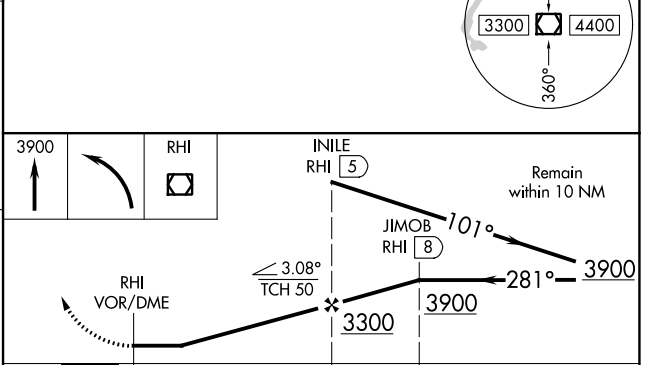
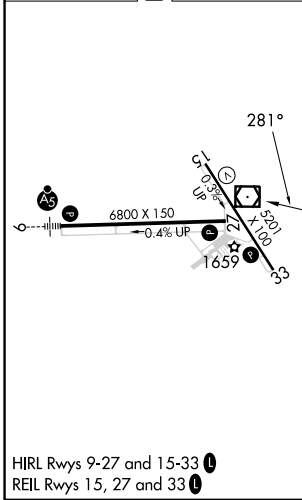
When local altimeter setting not received, use Tomhawk altimeter setting and increase all MDA 60 feet and Cat C/D visibility ¼ mile.

MISSED APPROACH: Climb to 3900 then left turn direct RHI VOR/DME and hold.

ASOS 126.825	MINNEAPOLIS CENTER 133.65 281.5	UNICOM 123.0 (CTAF)
------------------------	---	-------------------------------



ELEV 1624	D	TDZE 1606
-----------	---	-----------



CATEGORY	A	B	C	D
S-27	2220-1 614 (600-1)		2220-1¾ 614 (600-1¾)	
CIRCLING	2220-1 596 (600-1)	2260-1 636 (700-1)	2260-1¾ 636 (700-1¾)	2280-2 656 (700-2)

EC-3, 31 OCT 2024 to 28 NOV 2024

EC-3, 31 OCT 2024 to 28 NOV 2024