

APP CRS	Rwy ldg	5819
048°	TDZE	309
	Apt Elev	309

RNAV (GPS) RWY 5

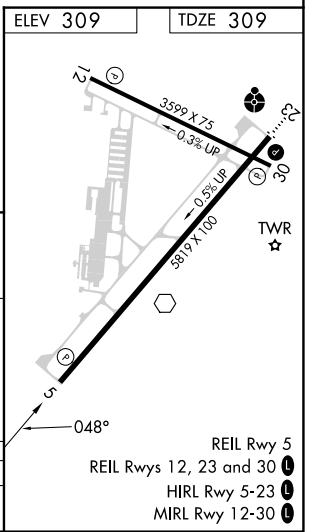
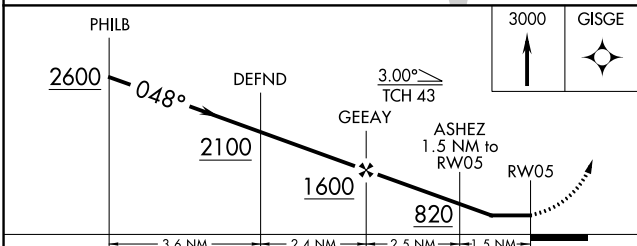
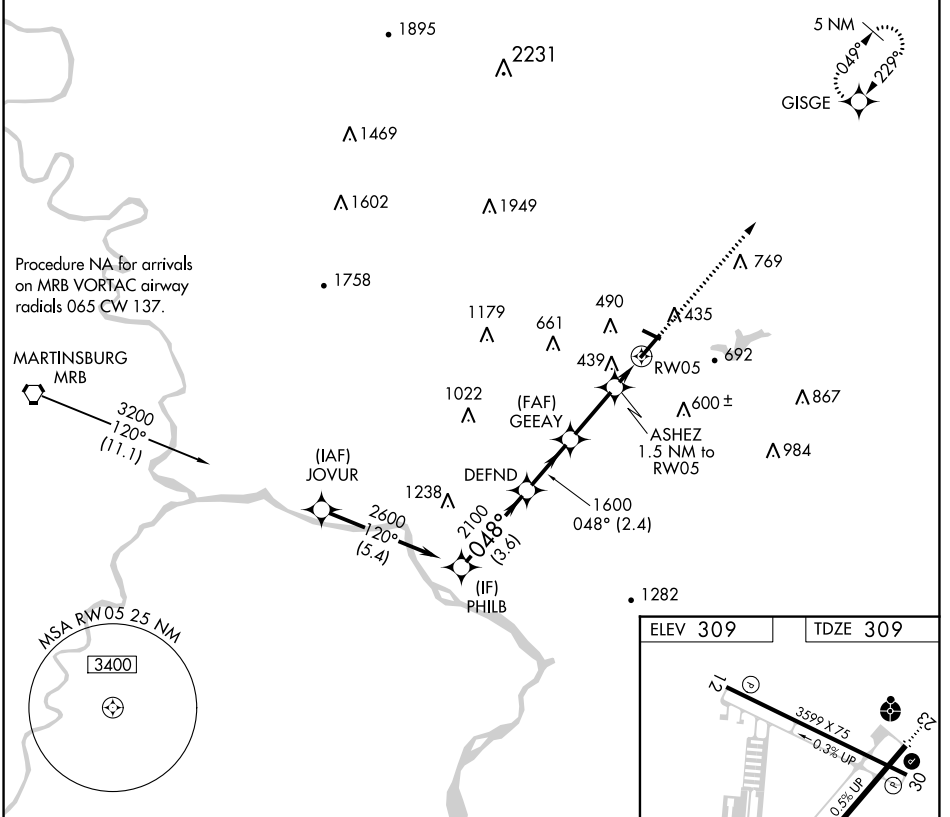
FREDERICK MUNI (F'DK)

RNP APCH - GPS.

▲ Rwy 5 helicopter visibility reduction below ¾ SM NA.

MISSED APPROACH: Climb to 3000 direct GISGE and hold, continue climb-in-hold to 3000.

ATIS 124.875	POTOMAC APP CON 126.1 338.25	FREDERICK TOWER ★ 132.4 (CTAF) 0	GND CON 127.425	CLNC DEL 127.425	CLNC DEL 126.9 (When twr closed)	UNICOM 122.95
------------------------	--	---	---------------------------	----------------------------	---	-------------------------



CATEGORY	A	B	C	D
LNAV MDA	700-1	391 (400-1)	700-1½	391 (400-1½)

NE-3, 31 OCT 2024 to 28 NOV 2024

NE-3, 31 OCT 2024 to 28 NOV 2024