

SCHEP ONE DEPARTURE

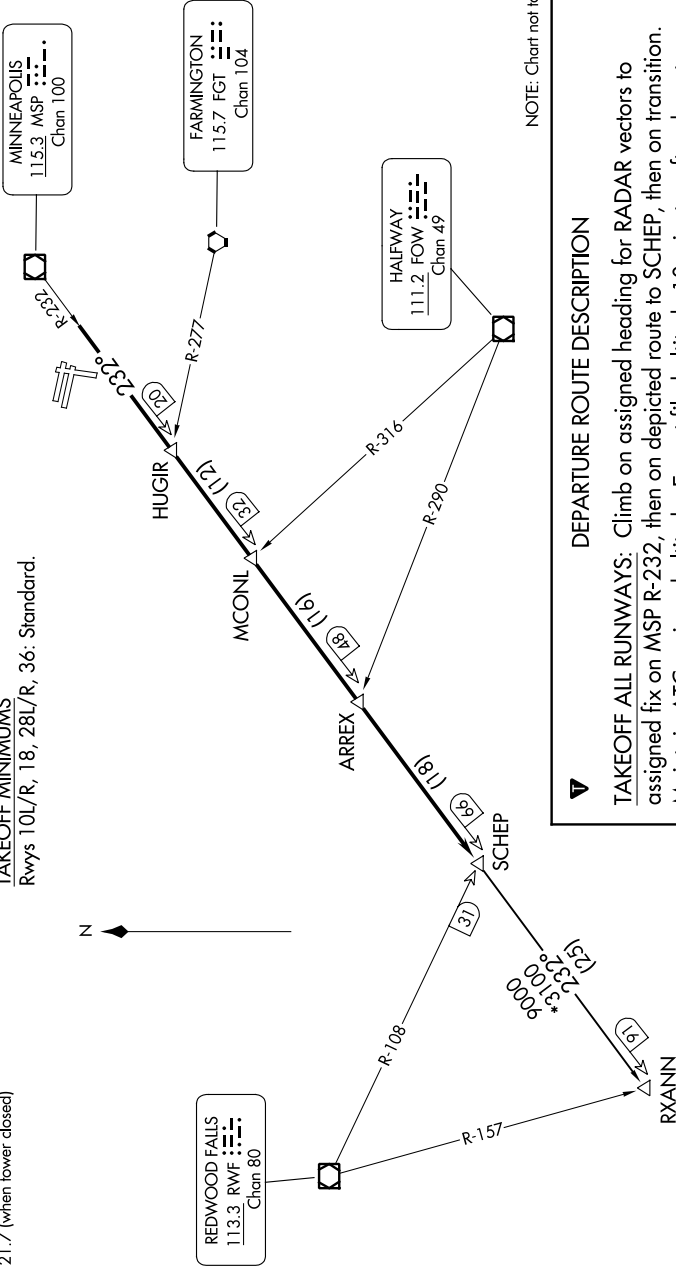
NC-1, 31 OCT 2024 to 28 NOV 2024

MINNEAPOLIS DEP CON
134.7 284.7
ATIS
124.9
MINNEAPOLIS CLNC DEL
121.7 (when lower closed)

RADAR required.

TOP ALTITUDE:
ASSIGNED BY ATC

TAKEOFF MINIMUMS
Rwys 10L/R, 18, 28L/R, 36: Standard.



NOTE: Chart not to scale.

DEPARTURE ROUTE DESCRIPTION

TAKEOFF ALL RUNWAYS: Climb on assigned heading for RADAR vectors to assigned fix on MSP R-232, then on depicted route to SCHEP, then on transition. Maintain ATC assigned altitude. Expect filed altitude 10 minutes after departure.

RXANNI TRANSITION (SCHEP1.RXANNI): From over SCHEP INT on MSP R-232 to RXANNI INT.

SCHEP ONE DEPARTURE

(SCHEP1.SCHEP) 08SEP22

NC-1, 31 OCT 2024 to 28 NOV 2024