

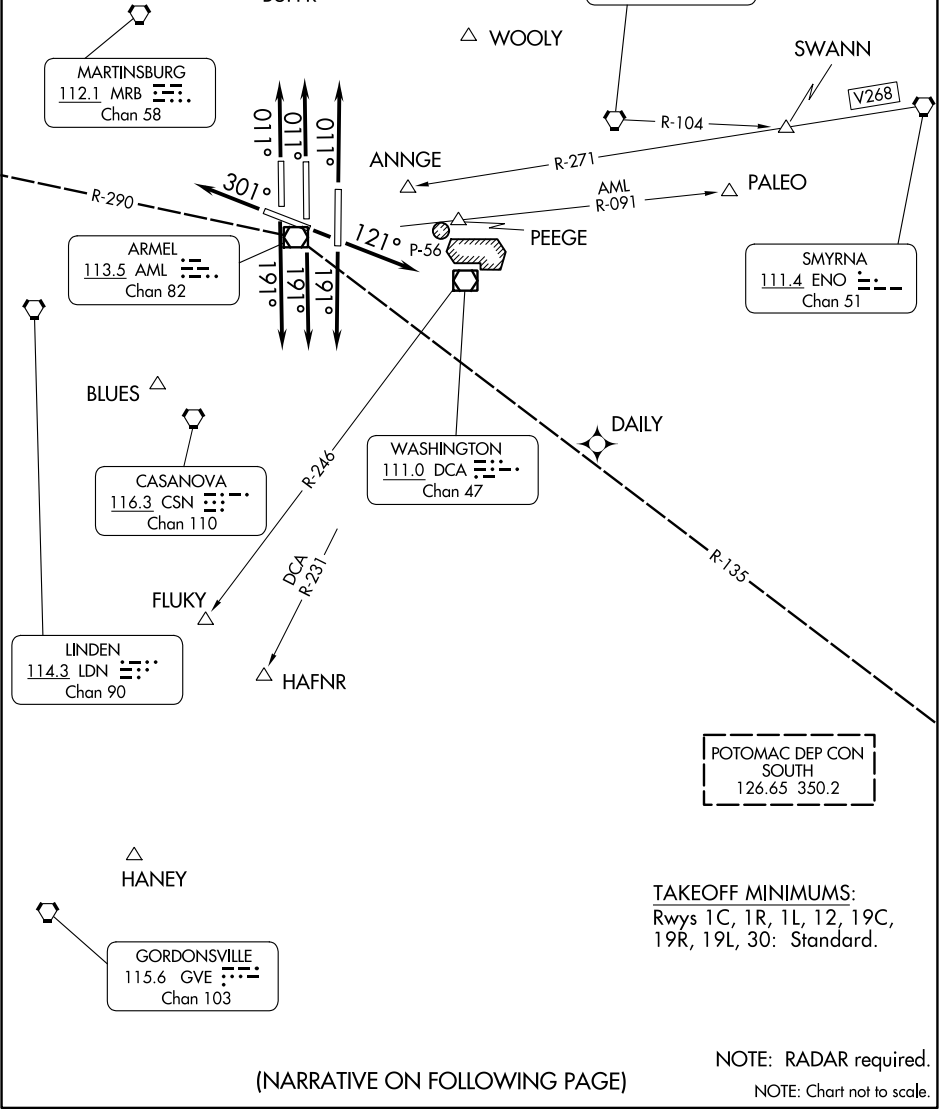
CAPITAL ONE DEPARTURE

D-ATIS 134.85
 CLNC DEL 135.7 317.8
 CPDLC
 GND CON
 121.9 317.8 (EAST)
 121.625 348.6 (WEST)
 DULLES TOWER
 120.1 317.8 (Rwy 1R/19L)
 120.25 348.6 (Rwy 1C/19C)
 134.425 348.6 (Rwys 1L/19R, 12/30)

POTOMAC DEP CON
 NORTH
 125.05 350.2

WESTMINSTER
 117.9 EMI
 Chan 126

**TOP ALTITUDE:
 3000**



NE-3, 31 OCT 2024 to 28 NOV 2024

NE-3, 31 OCT 2024 to 28 NOV 2024

POTOMAC DEP CON
 SOUTH
 126.65 350.2

TAKEOFF MINIMUMS:
 Rwys 1C, 1R, 1L, 12, 19C,
 19R, 19L, 30: Standard.

NOTE: RADAR required.
 NOTE: Chart not to scale.

(NARRATIVE ON FOLLOWING PAGE)

CAPITAL ONE DEPARTURE



DEPARTURE ROUTE DESCRIPTION

TAKE OFF RUNWAYS 1C, 1L, 1R: Climb heading 011° or as assigned by ATC,
Thence. . . .

TAKE OFF RUNWAY 12: Climb heading 121° or as assigned by ATC, Thence. . . .

TAKE OFF RUNWAYS 19C, 19L, 19R: Climb heading 191° or as assigned by ATC,
Thence. . . .

TAKE OFF RUNWAY 30: Climb heading 301° or as assigned by ATC, Thence. . . .

. . . .Expect radar vectors to filed/assigned route or depicted fix. Maintain 3000,
expect clearance to filed altitude/flight level 10 minutes after departure.

SPECIAL INSTRUCTIONS: For appropriate departure control frequency, see graphic.
Use frequency depicted within sector where your first Navaid/Fix/Route is located,
or as assigned.

NE-3, 31 OCT 2024 to 28 NOV 2024

NE-3, 31 OCT 2024 to 28 NOV 2024