

LOC/DME I-HSU 110.75 Chan 44 (Y)	APP CRS 191°	Rwy Idg TDZE Apt Elev	9400 278 312
--	------------------------	-----------------------------	---

ILS RWY 19R (CAT II & III)

WASHINGTON DULLES INTL (IAD)

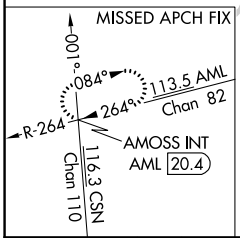
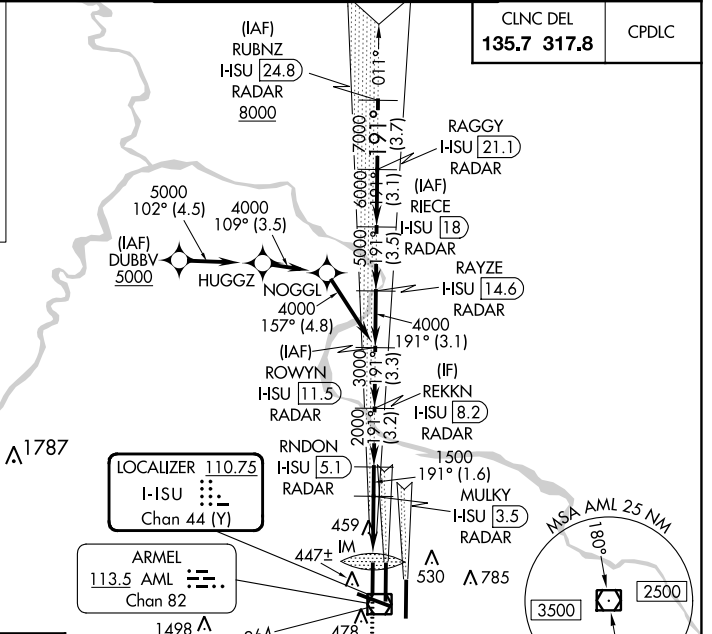
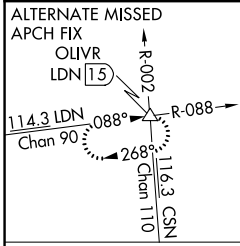
RNP APCH-GPS. From DUBBV.
DME or RADAR required. RADAR required for procedure entry at RUBNZ.
Simultaneous approach authorized.

ALSF-2
MISSED APPROACH: Climb to 800 then climbing right turn to 3000 on heading 280° and AML VOR/DME R-264 to AMOSS INT/AML 20.4 DME and hold.

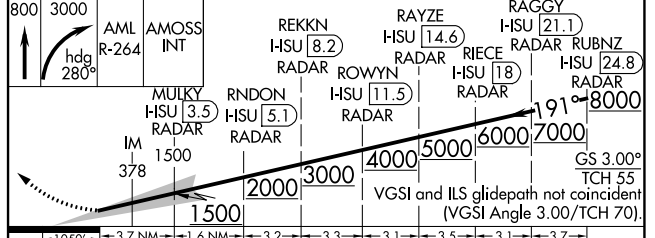
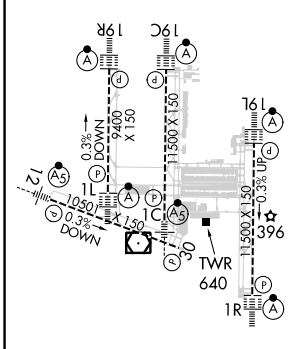
D-ATIS 134.85	POTOMAC APP CON 120.45 306.925 (241°-330°) 128.525 306.925 (091°-240°) 126.1 338.25 (331°-090°)
-------------------------	---

DULLES TOWER 120.1 317.8 (Rwy 1R/19L) 120.25 348.6 (Rwy 1C/19C) 134.425 348.6 (Rwys 1L/19R and 12/30)	
---	--

GND CON 121.9 317.8 (EAST) 121.625 348.6 (WEST)



ELEV 312	D	TDZE 278
-----------------	----------	-----------------



CATEGORY	A	B	C	D
S-ILS 19R		CAT II	RA 102/12	100 DA 378
S-ILS 19R		CAT IIIa	RVR 07	
S-ILS 19R		CAT IIIb	RVR 06	
S-ILS 19R		CAT IIIc	NA	

CATEGORY II & III ILS - SPECIAL AIRCREW & AIRCRAFT CERTIFICATION REQUIRED

NE-3, 31 OCT 2024 to 28 NOV 2024

NE-3, 31 OCT 2024 to 28 NOV 2024