
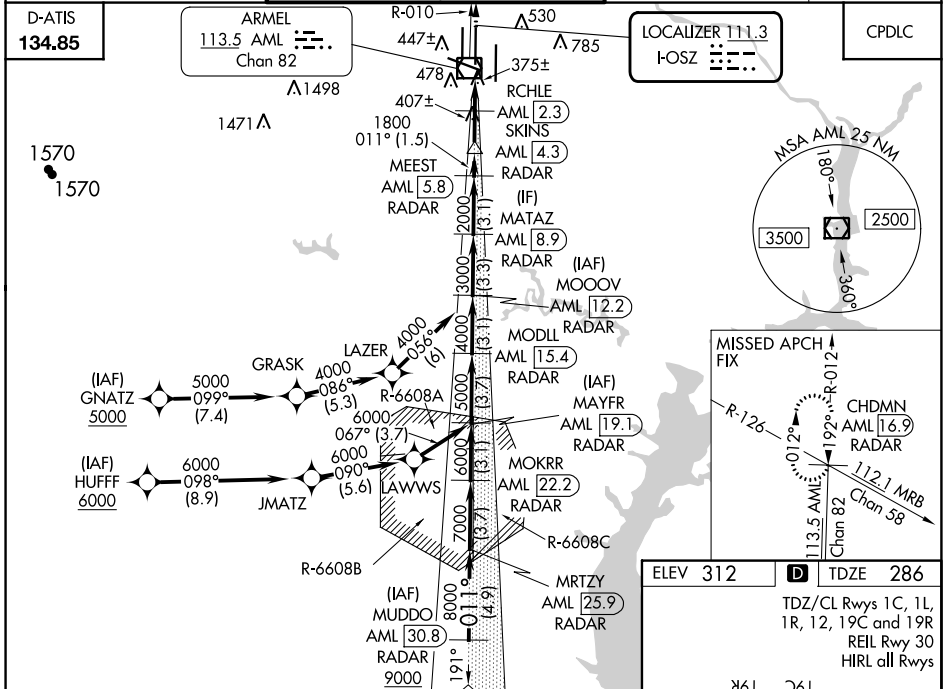


LOC I-OSZ 111.3	APP CRS 011°	Rwy ldg 11500 TDZE 286 Apt Elev 312
---------------------------	------------------------	---

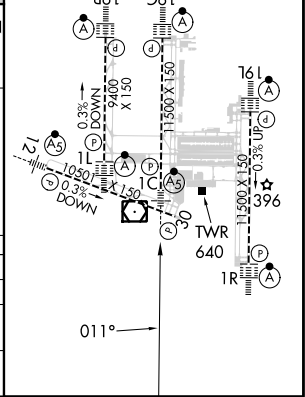
ILS or LOC RWY 1C

WASHINGTON DULLES INTL (IAD)

RNP APCH-GPS. From GNATZ or HUFFF.		DULLES TOWER 120.1 317.8 (Rwy 1R/19L) 120.25 348.6 (Rwy 1C/19C) 134.425 348.6 (Rwys 1L/19R and 12/30)		GND CON 121.9 317.8 (EAST) 121.625 348.6 (WEST)	CLNC DEL 135.7 317.8
DME or RADAR required. DME required for LOC only. RADAR required for procedure entry at MUDDO.		MALS R 		MISSED APPROACH: Climb to 4000 on AML VOR/DME R-010 to CHDMN/AML 16.9 DME/RADAR and hold, continue climb-in-hold to 4000.	
<p>Simultaneous approach authorized. For inop ALS, increase S-LOC Cats C/D visibility to RVR 5500. DME from AML VOR/DME. DME use requires simultaneous reception of I-OSZ and AML DME.</p>					



MUDDO AML [30.8] RADAR	MOKRR AML [22.2] RADAR	MODLL AML [15.4] RADAR	MATAZ AML [8.9] RADAR	4000 AML R-010	CHDMN AML [16.9]
9000 RADAR	MAYFR AML [19.1] RADAR	MOOOV AML [12.2] RADAR	MEEST AML [5.8] RADAR	SKINS AML [4.3] RADAR	AML VOR/DME
8000 RADAR	GS 3.00° TCH 54	7000 RADAR	6000 RADAR	5000 RADAR	4000 RADAR
VGS1 and ILS glidepath not coincident (VGS1 Angle 3.00/TCH 70).					
4.9 NM	3.7 NM	3.1 NM	3.1 NM	3.1 NM	1.5 NM
CATEGORY A		CATEGORY B		CATEGORY C	
S-ILS 1C 486/18 200 (200-½)					
S-LOC 1C 640/24 354 (400-½)		640/30 354 (400-¾)			
CIRCLING 940-1 628 (700-1)		940-1¾ 628 (700-1¾)		1180-2¾ 868 (900-2¾)	



NE-3, 31 OCT 2024 to 28 NOV 2024

NE-3, 31 OCT 2024 to 28 NOV 2024