

LOC/DME I-HAD 110.1 Chan 38	APP CRS 011°	Rwy ldg 11500 TDZE 312 Apt Elev 312
--	------------------------	--

ILS or LOC RWY 1R
WASHINGTON DULLES INTL (IAD)

RNP APCH-GPS. From GNATZ, or HUFFF.

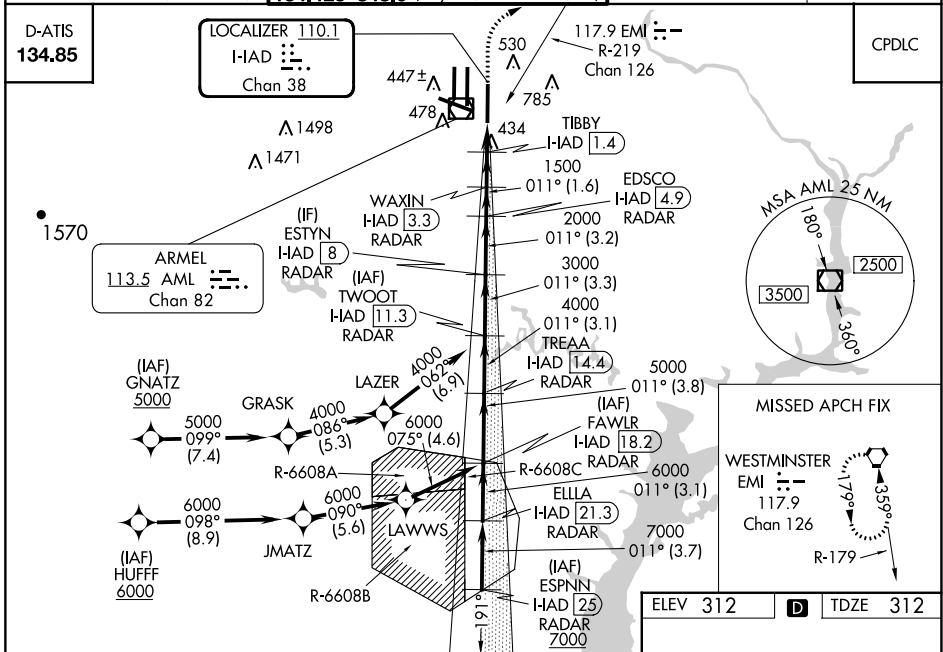
DME or RADAR required. DME required for LOC only. RADAR required for procedure entry at ESPNN.

ALSF-2

MISSED APPROACH: Climb to 800 then climbing right turn to 3000 on heading 060° and EMI VORTAC R-219 to EMI VORTAC and hold.

Simultaneous approach authorized.

POTOMAC APP CON 120.45 306.925 (241°-330°) 128.525 306.925 (091°-240°) 126.1 338.25 (331°-090°)	DULLES TOWER 120.1 317.8 (Rwy 1R/19L) 120.25 348.6 (Rwy 1C/19C) 134.425 348.6 (Rwys 1L/19R and 12/30)	GND CON 121.9 317.8 (EAST) 121.625 348.6 (WEST)	CLNC DEL 135.7 317.8
---	---	---	--------------------------------



ESPNN I-HAD 25 RADAR	ELLA I-HAD 21.3 RADAR	FAWLR I-HAD 18.2 RADAR	TREA I-HAD 14.4 RADAR	TWOOT I-HAD 11.3 RADAR	ESTYN I-HAD 8 RADAR	EDSCO I-HAD 4.9 RADAR	WAXIN I-HAD 3.3 RADAR	TIBBY I-HAD 1.4 RADAR	DME ANT.	800	3000	EMI
										↑	hdg 060°	R-219
7000	7000	6000	5000	4000	3000	2000	1500	900		1500	900	
										3.7 NM	3.1 NM	3.8 NM
										3.2 NM	1.6 NM	1.9 NM
										0.7	0.8	0.2
CATEGORY	A	B	C	D								
S-ILS 1R	512/18		200 (200-½)									
S-LOC 1R	700/24	388 (400-½)	700/35	388 (400-¾)								
CIRCLING	940-1	628 (700-1)	940-1¾	628 (700-1¾)	1180-2¾	868 (900-2¾)						

